

HI-ILS or LOC Z RWY 33

LOC I-MIZ 109.5	APCH CRS 325°	Rwy ldg 12,001
		TDZE 105
		Arprt Elev 113

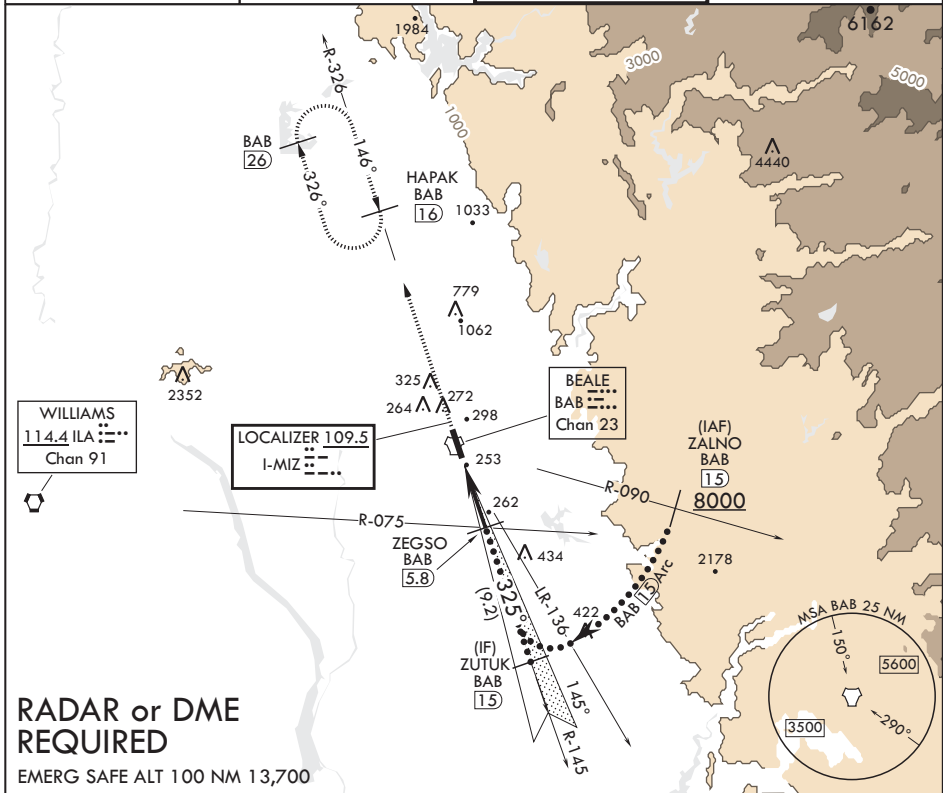
JAL-771 (USAF)

BEALE AFB (KBAB)

V * When ALS inop, increase CAT CDE RVR to 40 and vis to 3/4 mile.
 ** When ALS inop, increase CAT CDE RVR to 60 vis to 1 1/8 miles.
 *** Circling not authorized E of Rwy 15-33.

ALSF-1 MISSED APPROACH: Climb to 3600 intercept BAB R-326 to HAPAK and hold.

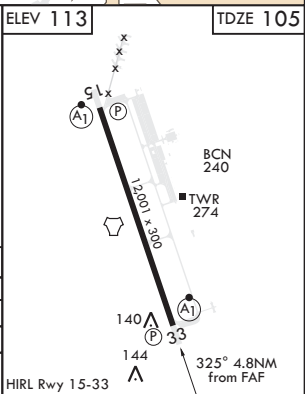
ATIS* 124.55 273.5	NORCAL APP CON 125.4 259.1	TOWER* 119.4 284.75	GND CON 121.6 257.75
-------------------------------------	---	--------------------------------------	---------------------------------------



RADAR or DME REQUIRED

EMERG SAFE ALT 100 NM 13,700

3600 BAB R-326	HAPAK BAB 16	ZUTUK BAB R-145			ZALNO BAB R-090 15
		TACAN			
† LOC only		ZEGSO ILA R-075 BAB 5.8			8000
ZAPUX 1.5		325°			
1700		3200			GS 3.00° TCH 51
15 NM		4.3 NM			
CATEGORY	C	D	E		
S-ILS 33*	305/24	200	(200-1/2)		
S-LOC 33**	520/40	415	(500-3/4)		
CIRCLING***	600-1 1/2 487 (500-1 1/2)	680-2 567 (600-2)	840-2 1/2 727 (800-2 1/2)		



HI-ILS or LOC Z RWY 33

SW-2, 21 MAY 2020 to 18 JUN 2020

SW-2, 21 MAY 2020 to 18 JUN 2020