

VORTAC OGG 115.1 Chan 98	APP CRS 194°	Rwy Idg TDZE 25 Apt Elev 53	6995
--	------------------------	---	-------------

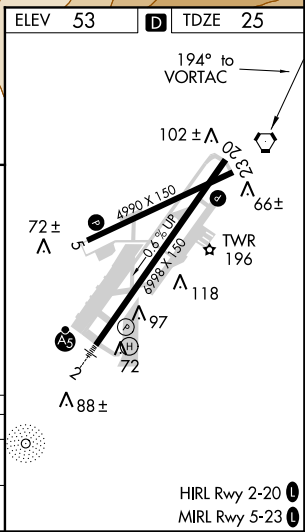
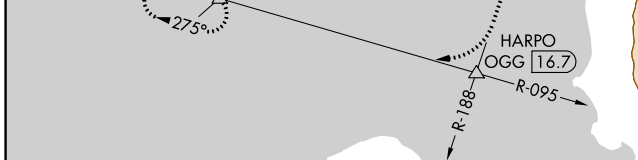
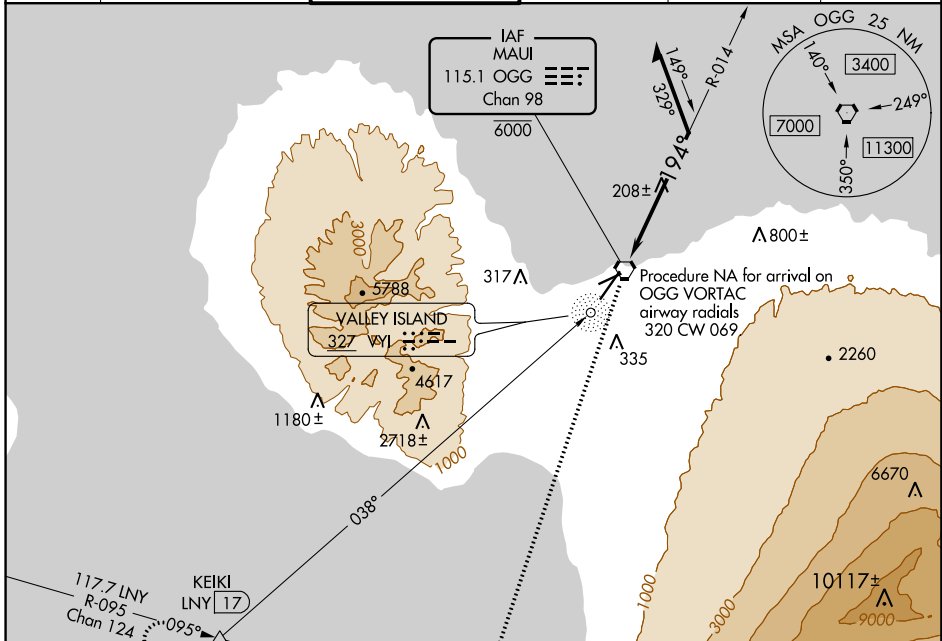
VOR Y RWY 20

KAHALUI (OGG)(PHOG)

ADF or DME required.

MISSED APPROACH: Climb to 5000 on OGG R-188 to HARPO INT/ OGG 16.7 DME then right turn on LNY R-095 to KEIKI INT/17 DME and hold.

ATIS 128.6	HCF APPROACH 120.2 322.4 (NORTH) 119.5 225.4 (SOUTH)	MAUI TOWER ★ 118.7 (CTAF) 0 279.6	GND CON 121.9 279.6	CLNC DEL 120.6 290.5	UNICOM 122.95
----------------------	--	---	-------------------------------	--------------------------------	-------------------------



5000 ↑ OGG R-188	HARPO △ LNY R-095	KEIKI △ LNY R-095	OGG VORTAC 6000 5100	Remain within 10 NM
			014°	2100
			OGG 1.4	194°
			0.2	1.4 NM

CATEGORY	A	B	C	D
S-20	600-1	575 (600-1)	600-1½	575 (600-1½)
CIRCLING	600-1 547 (600-1)	620-1 567 (600-1)	740-2 687 (700-2)	1140-3 1087 (1100-3)

PAC, 21 MAY 2020 to 16 JUL 2020

PAC, 21 MAY 2020 to 16 JUL 2020