

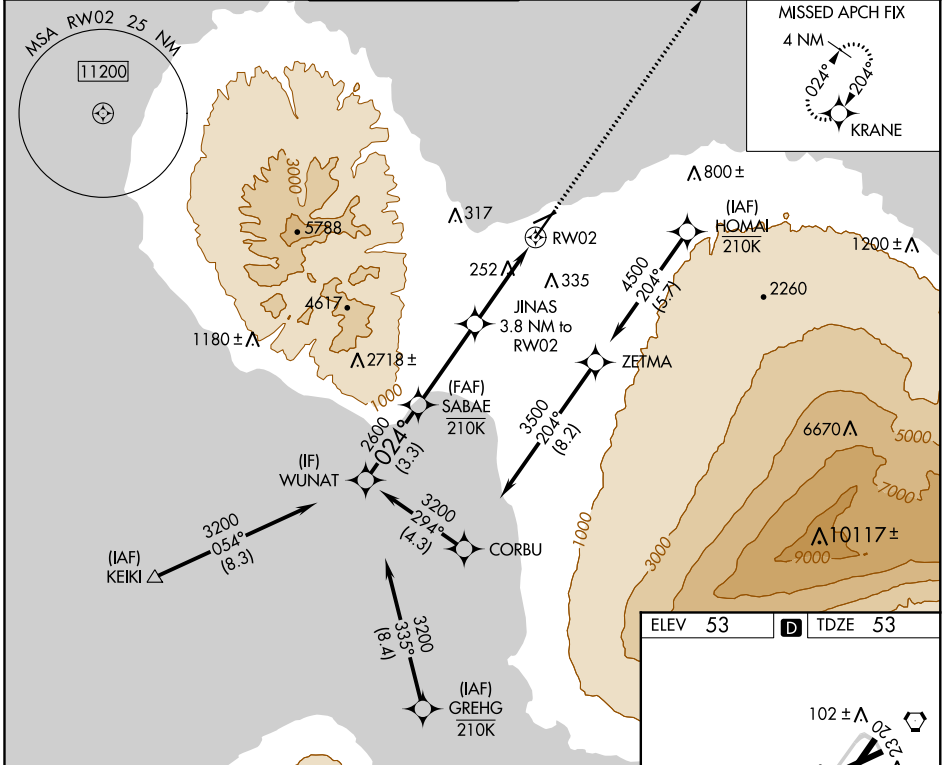
APP CRS	Rwy Idg	<b>6995</b>
<b>024°</b>	TDZE	<b>53</b>
	Apt Elev	<b>53</b>

# RNAV (GPS) Y RWY 2

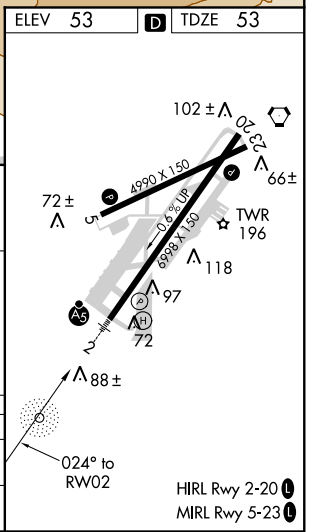
KAHALUI (OGG)(PHOG)

RNP APCH.	MALSR 	MISSED APPROACH: Climb to 3000 direct KRANE and hold.
<p><b>▼</b> Rwy 2 helicopter visibility reduction below 3/4 SM NA. When local altimeter setting not received, procedure NA. For inop ALS, increase LNAV Cat A/B visibility to 1 SM, and Cat C/D to 1 3/8 SM.</p>		

ATIS <b>128.6</b>	HCF APPROACH <b>120.2 322.4 (NORTH)</b> <b>119.5 225.4 (SOUTH)</b>	MAUI TOWER ★ <b>118.7 (CTAF) 0 279.6</b>	GND CON <b>121.9 279.6</b>	CLNC DEL <b>120.6 290.5</b>	UNICOM <b>122.95</b>
----------------------	--	---	-------------------------------	--------------------------------	-------------------------



	WUNAT	SABAE	JINAS 3.8 NM to RW02	RW02	KRANE
	3200	2600	1400	3000	
	024°	024°	3.20° TCH 62	1.3 NM to RW02	
	3.3 NM	3.5 NM	2.5 NM	1.3 NM	
CATEGORY	A	B	C	D	
LNAV MDA	520-3/4	467 (500-3/4)	520-1	467 (500-1)	
CIRCLING	520-1 467 (500-1)	620-1 567 (600-1)	740-2 687 (700-2)	1140-3 1087 (1100-3)	



PAC, 21 MAY 2020 to 16 JUL 2020

PAC, 21 MAY 2020 to 16 JUL 2020