

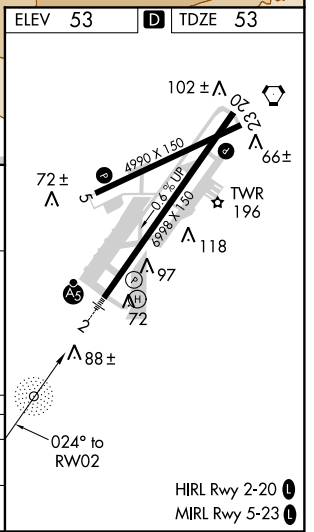
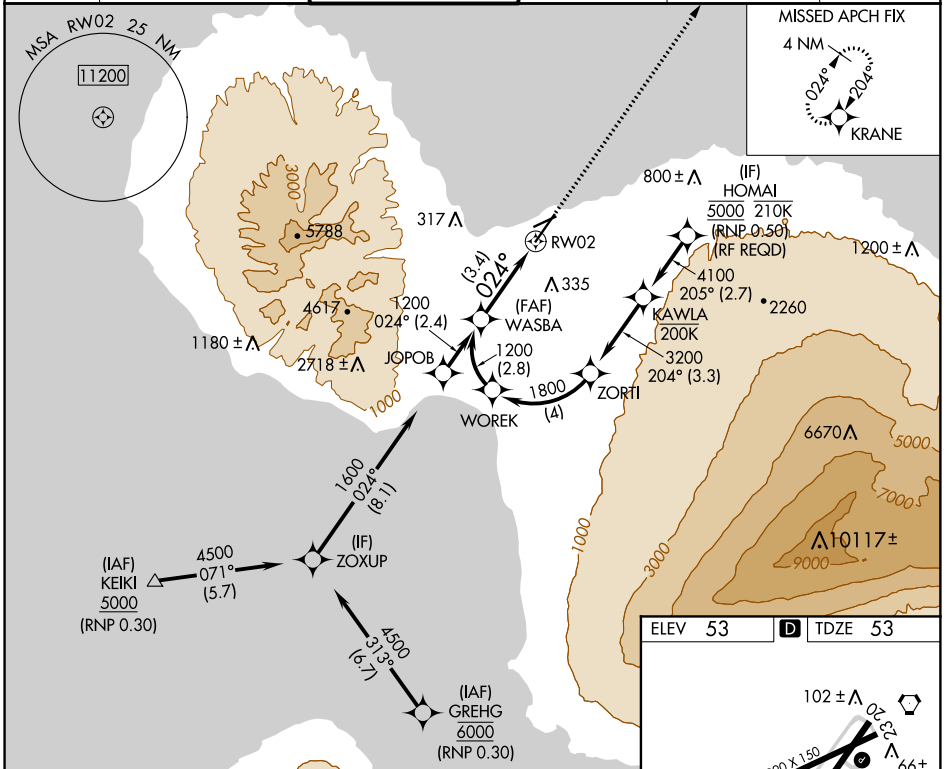
APP CRS	Rwy Idg	<b>6995</b>
<b>024°</b>	TDZE	<b>53</b>
	Apt Elev	<b>53</b>

# RNAV (RNP) Z RWY 2

KAHULUI (OGG)(PHOG)

RNP AR APCH.	<p>▼ For uncompensated Baro-VNAV systems, procedure NA below 14°C or above 54° C. When local altimeter setting not received, procedure NA. For inop ALS, increase RNP 0.30 all Cats visibility to 7/8 SM.</p>	MALSR		MISSED APPROACH: Climb to 3000 direct KRANE and hold.

ATIS	HCF APPROACH	MAUI TOWER ★	GND CON	CLNC DEL	UNICOM
<b>128.6</b>	<b>120.2 322.4</b> (NORTH) <b>119.5 225.4</b> (SOUTH)	<b>118.7</b> (CTAF) <b>0 279.6</b>	<b>121.9 279.6</b>	<b>120.6 290.5</b>	<b>122.95</b>



WASBA		See planview for multiple IF locations.		3000	KRANE
1200				↑	✧
GP 3.00°		024°			
TCH 62					
		3.4 NM			
CATEGORY	A	B	C	D	
RNP 0.30 DA		349-3/4	296 (300-3/4)		
<b>AUTHORIZATION REQUIRED</b>					
HIRL Rwy 2-20 MIRL Rwy 5-23					

PAC, 21 MAY 2020 to 16 JUL 2020

PAC, 21 MAY 2020 to 16 JUL 2020