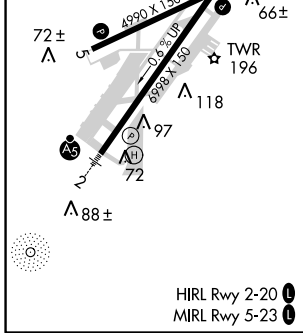
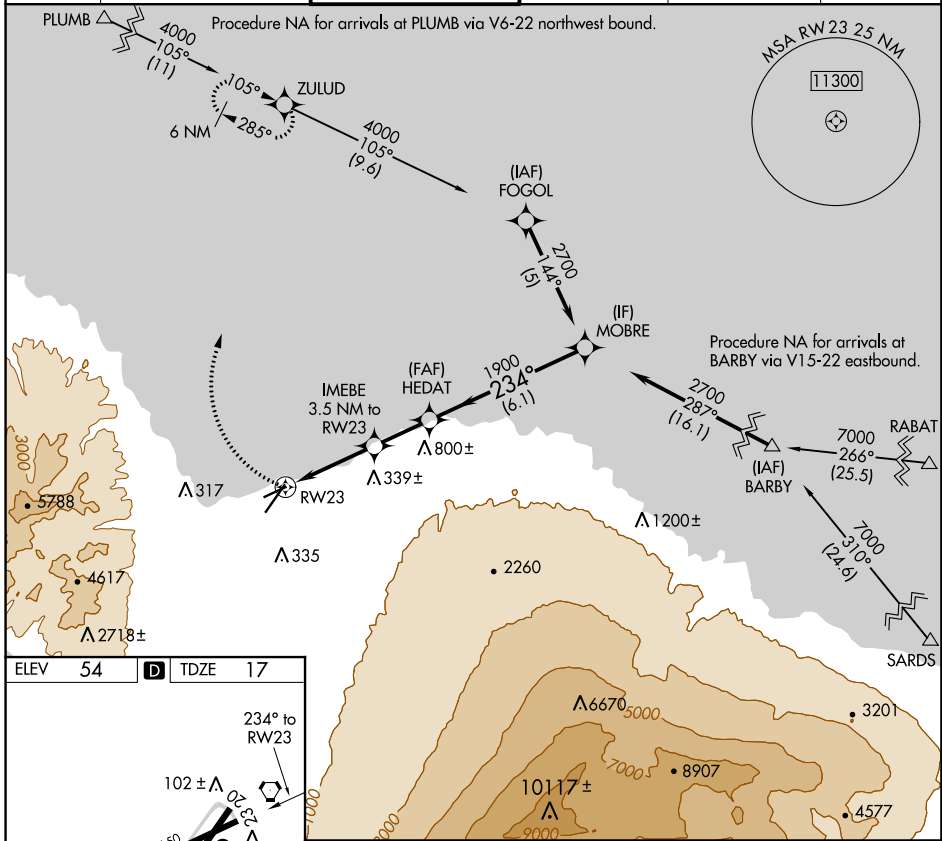


APP CRS 234°	Rwy Idg 4990
	TDZE 17
	Apt Elev 54

RNAV (GPS) RWY 23

KAHALULUI (OGG)(PHOG)

▽	DME/DME RNP-0.3 NA.		MISSED APPROACH: Climbing right turn to 4000 direct ZULUD and hold, continue climb-in-hold to 4000.		
ATIS 128.6	HCF APPROACH 120.2 322.4 (NORTH) 119.5 225.4 (SOUTH)	MAUI TOWER ★ 118.7 (CTAF) 0 279.6	GND CON 121.9 279.6	CLNC DEL 120.6 290.5	UNICOM 122.95



	ZULUD	HEDAT	MOBRE
	4000	1900	2700
	IMEBE 3.5 NM to RWY 23	3.05° TCH 50	Procedure Turn NA
	3.5 NM	2.2 NM	6.1 NM
CATEGORY	A	B	C
LNAV MDA	460-1	443 (500-1)	460-1¼ 443 (500-1¼)
C CIRCLING	500-1 446 (500-1)	620-1 566 (600-1)	780-2 726 (800-2)
			D
			460-1½ 443 (500-1½)

PAC, 21 MAY 2020 to 16 JUL 2020

PAC, 21 MAY 2020 to 16 JUL 2020