

APP CRS	Rwy ldg	<b>6995</b>
<b>204°</b>	TDZE	<b>25</b>
	Apt Elev	<b>53</b>

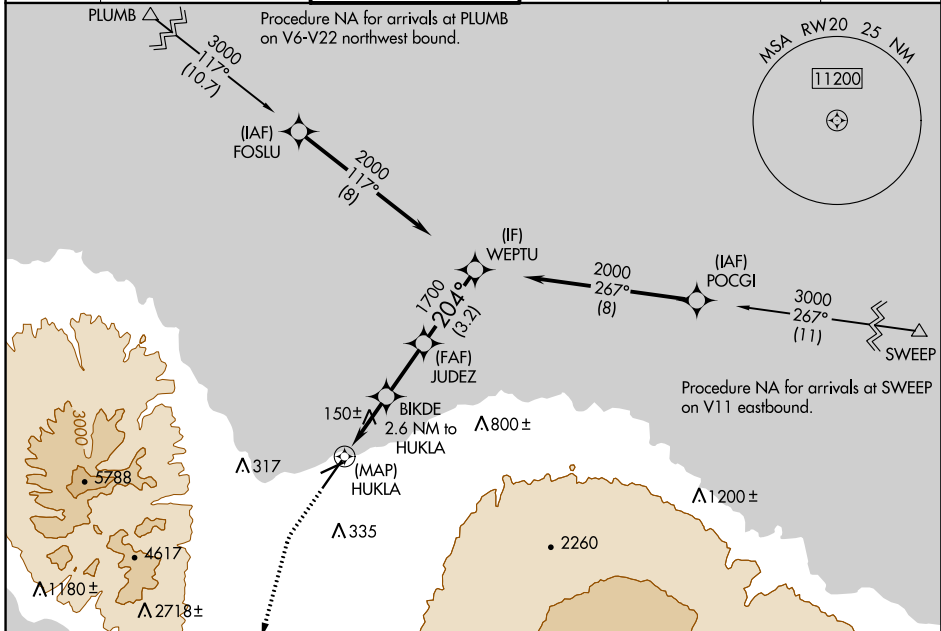
# RNAV (GPS) RWY 20

KAHALUI (OGG)(PHOG)

RNP APCH. MISSED APPROACH: Climb to 500 then climbing left turn to 4300 direct NDREW and hold.

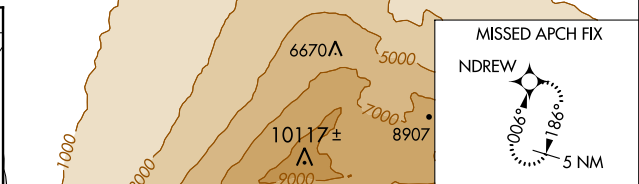
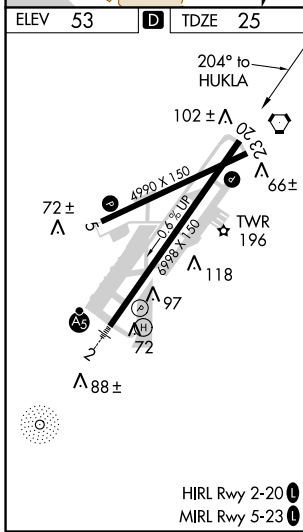
When local altimeter setting not received, procedure NA.

ATIS <b>128.6</b>	HCF APPROACH <b>120.2 322.4</b> (NORTH) <b>119.5 225.4</b> (SOUTH)	MAUI TOWER* <b>118.7</b> (CTAF) <b>0 279.6</b>	GND CON <b>121.9 279.6</b>	CLNC DEL <b>120.6 290.5</b>	UNICOM <b>122.95</b>
----------------------	--	---	-------------------------------	--------------------------------	-------------------------



PAC, 21 MAY 2020 to 16 JUL 2020

PAC, 21 MAY 2020 to 16 JUL 2020



500	4300	NDREW	VGSI and descent angles not coincident (VGSI Angle 3.00/TCH 76)	WEPTU
		0.8 NM to HUKLA	2.6 NM to HUKLA	3.00° TCH 55
		HUKLA	JUDEZ	WEPTU
		0.8	1.8	2.3
		0.2	0.8	1.8

CATEGORY	A	B	C	D
LNAV MDA	400-1 375 (400-1)			
CIRCLING	500-1 447 (500-1)	620-1 567 (600-1)	740-2 687 (700-2)	1140-3 1087 (1100-3)