

(NPLII2.SAKKI) 18032

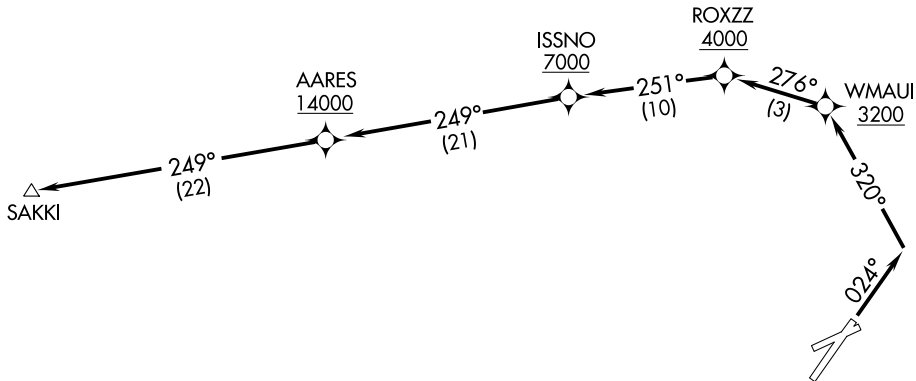
NPLII TWO DEPARTURE (RNAV)

AL-762 (FAA)

KAHULUI (OGG)(PHOG)
KAHULUI, HAWAII

ATIS 128.6
CLNC DEL
120.6 290.5
GND CON
121.9 279.6
MAUI TOWER *
118.7 (CTAF) 279.6
HCF APPROACH
NORTH 120.2 322.4
SOUTH 119.5 225.4

**TOP ALTITUDE:
ASSIGNED BY ATC**



NOTE: RNAV 1.
NOTE: GPS required.

TAKEOFF MINIMUMS

Rwys 5, 20, 23, NA - Air Traffic.

Rwy 2: Standard with minimum climb of 355' per NM to 11200.

NOTE: Chart not to scale.



DEPARTURE ROUTE DESCRIPTION

TAKEOFF RUNWAY 2: Climb to assigned altitude on heading 024° to intercept course 320° to cross WMAUI at or above 3200, and on track 276° to cross ROXZZ at or above 4000, and on track 251° to cross ISSNO at or above 7000, and on track 249° to cross AARES at or above 14000, and on track 249° to SAKKI.

NPLII TWO DEPARTURE (RNAV)

(NPLII2.SAKKI) 20AUG15

KAHULUI, HAWAII
KAHULUI (OGG)(PHOG)

PAC, 21 MAY 2020 to 16 JUL 2020

PAC, 21 MAY 2020 to 16 JUL 2020