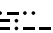
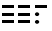


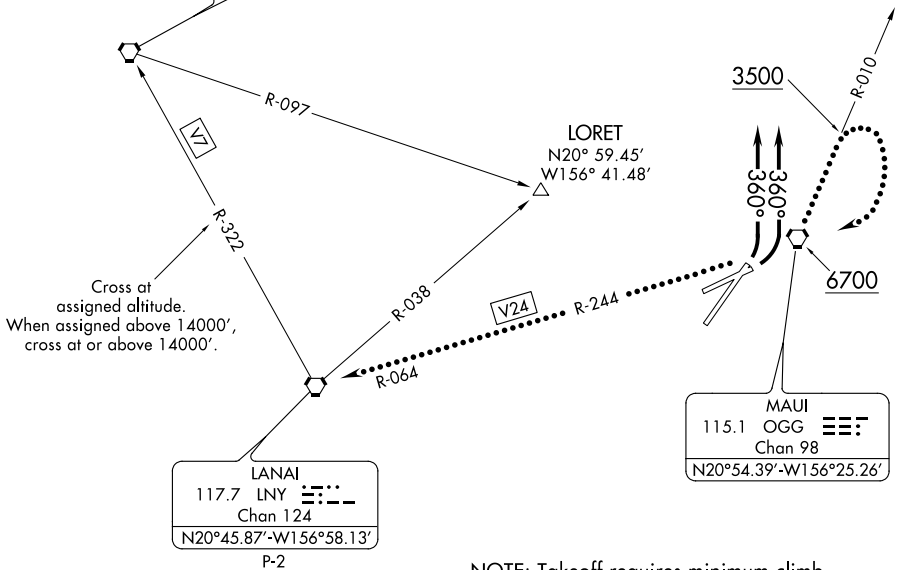
ATIS 128.6  
CLNC DEL  
120.6 290.5  
GND CON  
121.9 279.6  
MAUI TOWER ★  
118.7 (CTAF) 279.6  
HCF APPROACH  
120.2 322.4

MOLOKAI  
116.1 MKK   
Chan 108

LANAI  
117.7 LNY   
Chan 124  
N20°45.87'-W156°58.13'  
P-2

MAUI  
115.1 OGG   
Chan 98  
N20°54.39'-W156°25.26'

LORET  
N20° 59.45'  
W156° 41.48'



NOTE: Takeoff requires minimum climb of 420' per NM until reaching 8000'.

NOTE: Chart not to scale.

PAC, 21 MAY 2020 to 16 JUL 2020

PAC, 21 MAY 2020 to 16 JUL 2020



## DEPARTURE ROUTE DESCRIPTION

**TAKEOFF RUNWAYS 2 AND 5 ONLY:** After takeoff, all aircraft fly heading 360°, expect radar vectors west of Maui Island to assigned fix/route. Cross the LNY R-322 at assigned altitude. When assigned above 14000', cross at or above 14000'.

**LOST COMMUNICATIONS:** If not in contact with Departure Control 1 minute after crossing the shoreline, climb northbound via the OGG R-010 until reaching at least 3500'. Then reverse course to the right direct OGG VORTAC. Then via V24 to LNY VORTAC. Cross OGG VORTAC at or above 6700'.