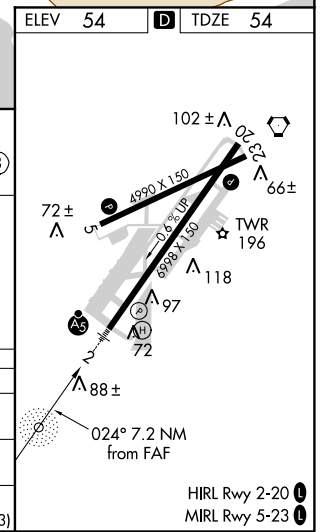
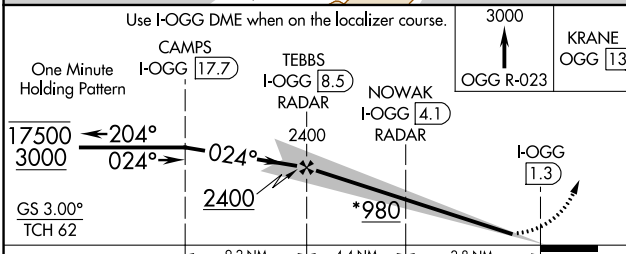
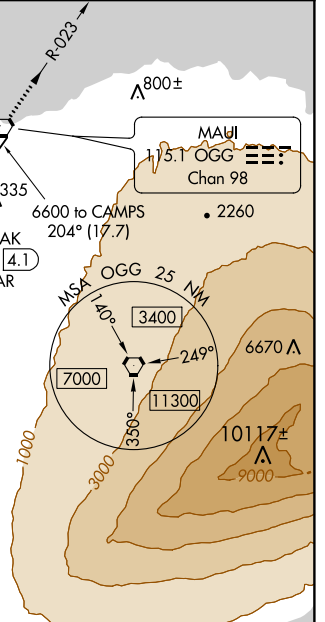
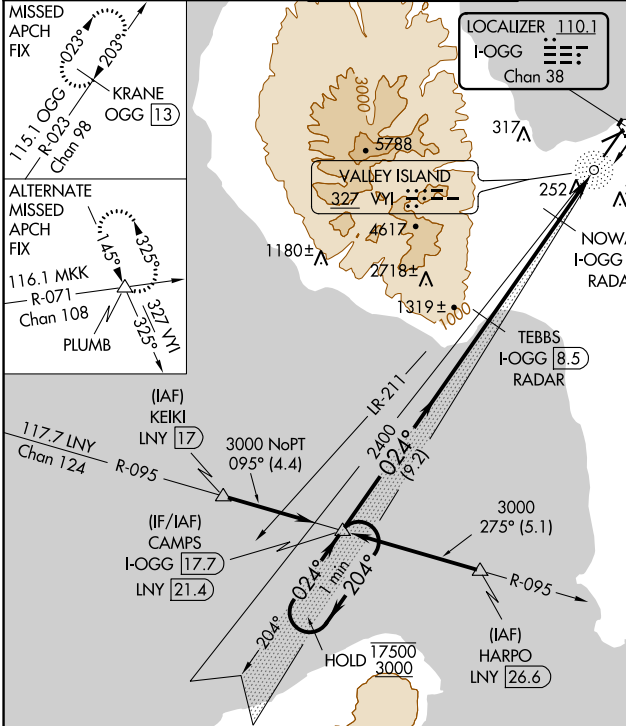


LOC/DME I-OGG <b>110.1</b> Chan <b>38</b>	APP CRS <b>024°</b>	Rwy ldg TDZE Apt Elev	<b>6995</b> <b>54</b> <b>54</b>
---	------------------------	-----------------------------	---------------------------------------

# ILS or LOC RWY 2

KAHULUI (OGG)(PHOG)

DME required. ▼ For inop ALS, increase ILS Cat E visibility to ¾ SM, ▲ and LOC Cats C/D/E visibility to 1 ¾ SM.		MALSR 	MISSED APPROACH: Climb to 3000 on OGG VORTAC R-023 to KRANE/OGG 13 DME and hold.		
ATIS <b>128.6</b>	HCF APPROACH <b>120.2 322.4 (NORTH)</b> <b>119.5 225.4 (SOUTH)</b>	MAUI TOWER ★ <b>118.7 (CTAF) 0 279.6</b>	GND CON <b>121.9 279.6</b>	CLNC DEL <b>120.6 290.5</b>	UNICOM <b>122.95</b>



CATEGORY	A	B	C	D	E
S-ILS 2	254-½ 200 (200-½)				
S-LOC 2	520-½	466 (500-½)	520-1 466 (500-1)		
CIRCLING	520-1 466 (500-1)	620-1 566 (600-1)	780-2 726 (800-2)	1180-3 1180 (1200-3)	1720-3 1666 (1700-3)

PAC, 21 MAY 2020 to 16 JUL 2020

PAC, 21 MAY 2020 to 16 JUL 2020

HIRL Rwy 2-20  
MIRL Rwy 5-23