

(BEACH4.BEACH) 18032  
**BEACH FOUR DEPARTURE**

AL-762 (FAA)

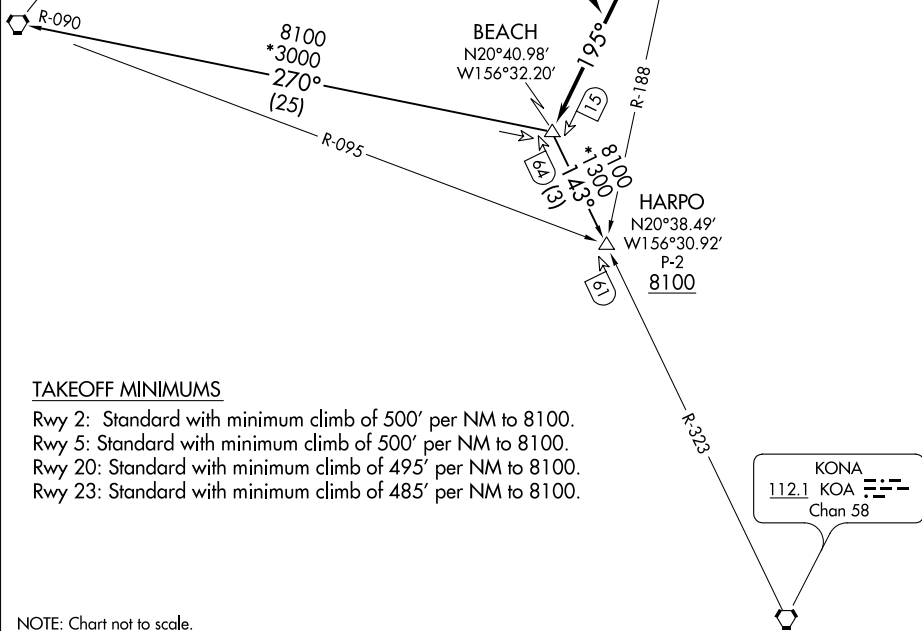
KAHULUI (OGG)(PHOG)  
 KAHULUI, HAWAII

ATIS 128.6  
 CLNC DEL  
 120.6 290.5  
 GND CON  
 121.9 279.6  
 MAUI TOWER \*  
 118.7 (CTAF) 279.6  
 HCF APPROACH  
 NORTH 120.2 322.4  
 SOUTH 119.5 225.4

**TOP ALTITUDE:  
 ASSIGNED BY ATC**

MAUI  
 115.1 OGG  
 Chan 98

LANAI  
 117.7 LNY  
 Chan 124  
 N20°45.87' - W156°58.13'  
 P-2



TAKEOFF MINIMUMS

- Rwy 2: Standard with minimum climb of 500' per NM to 8100.
- Rwy 5: Standard with minimum climb of 500' per NM to 8100.
- Rwy 20: Standard with minimum climb of 495' per NM to 8100.
- Rwy 23: Standard with minimum climb of 485' per NM to 8100.

NOTE: Chart not to scale.



**DEPARTURE ROUTE DESCRIPTION**

- TAKEOFF RUNWAY 2: Climb on heading 024° to 1400 then climbing right turn via OGG R-195 to BEACH INT.
- TAKEOFF RUNWAY 5: Climb on heading 054° to 2500 then climbing right turn via OGG R-195 to BEACH INT.
- TAKEOFF RUNWAYS 20, 23: Climbing left turn via OGG R-195 to BEACH INT.

HARPO TRANSITION (BEACH4.HARPO): From over BEACH INT on KOA R-323 to HARPO INT.

LANAI TRANSITION (BEACH4.LNY): From over BEACH INT on LNY R-090 to LNY VORTAC.

**BEACH FOUR DEPARTURE**  
 (BEACH4.BEACH) 20AUG15

KAHULUI, HAWAII  
 KAHULUI (OGG)(PHOG)

PAC, 21 MAY 2020 to 16 JUL 2020

PAC, 21 MAY 2020 to 16 JUL 2020