

SE-3, 21 MAY 2020 to 18 JUN 2020

- MIAMI APP CON 133.775 285.6
- FORT LAUDERDALE/HOLLYWOOD INTL D-ATIS 135.0
- FORT LAUDERDALE EXECUTIVE ATIS 119.85
- POMPANO BEACH AIRPARK ATIS 120.55
- MIAMI-OPA LOCKA EXECUTIVE ATIS 125.9
- NORTH PERRY ATIS 135.475
- FORT LAUDERDALE/HOLLYWOOD INTL
- NORTH PERRY
- MIAMI-OPA LOCKA EXECUTIVE

FORT LAUDERDALE EXECUTIVE ATIS

FORT LAUDERDALE EXECUTIVE ATIS

FORT LAUDERDALE EXECUTIVE ATIS

MIAMI-OPA LOCKA EXECUTIVE ATIS

NORTH PERRY ATIS

FORT LAUDERDALE/HOLLYWOOD INTL

NORTH PERRY

MIAMI-OPA LOCKA EXECUTIVE

POMPANO BEACH AIRPARK

FORT LAUDERDALE EXECUTIVE ATIS

FORT LAUDERDALE EXECUTIVE ATIS

MIAMI-OPA LOCKA EXECUTIVE ATIS

NORTH PERRY

MIAMI-OPA LOCKA EXECUTIVE

DEKAL

N25°51.03'-W79°37.88'

VERTICAL NAVIGATION

PLANNING INFORMATION

Turbojets expect 6000 250K

ATC may assign 5000 250K

All other aircraft expect 4000

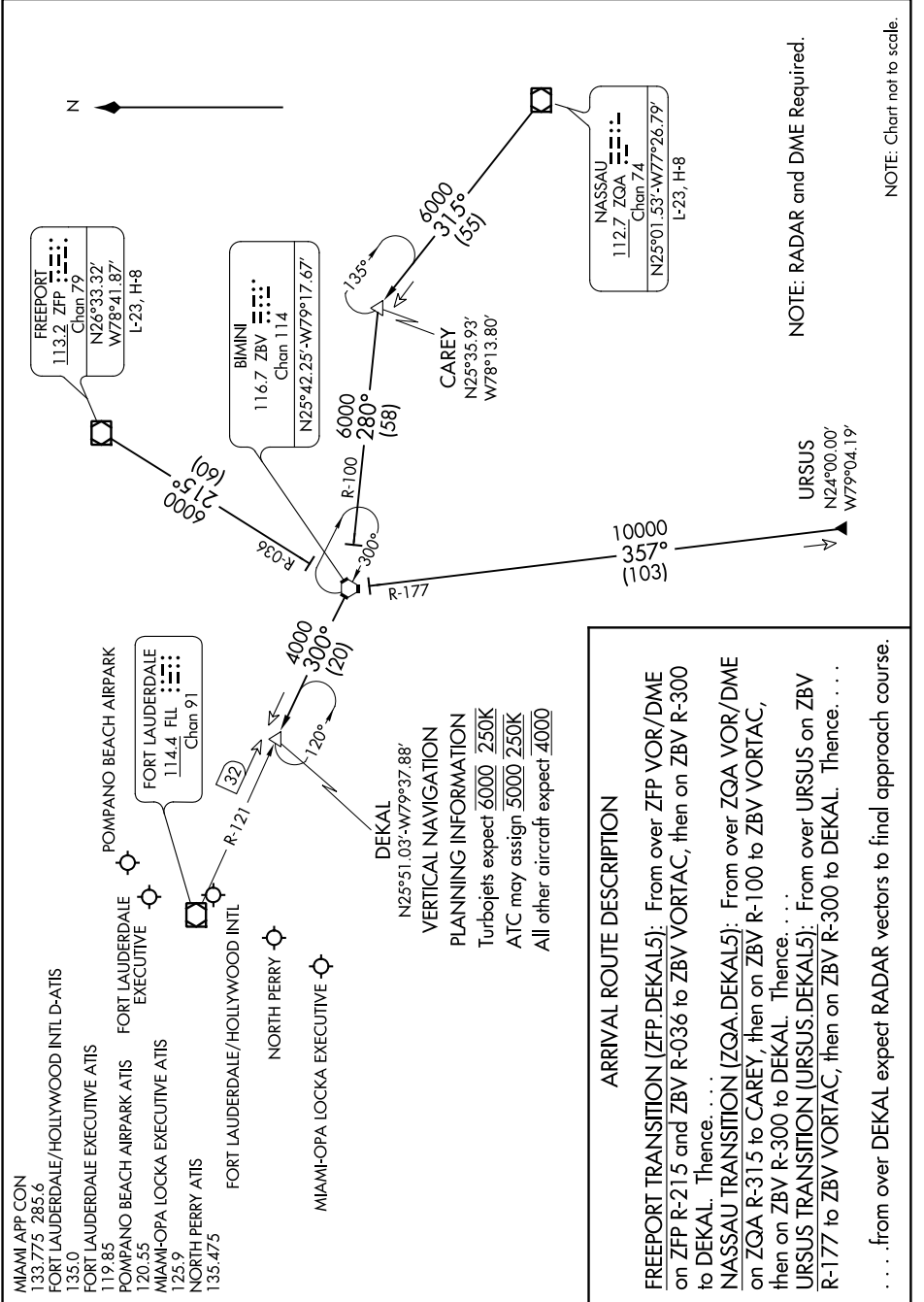
ARRIVAL ROUTE DESCRIPTION

FREEPORT TRANSITION (ZFP DEKAL5): From over ZFP VOR/DME on ZFP R-215 and ZBV R-036 to ZBV VORTAC, then on ZBV R-300 to DEKAL. Thence. . . .

NASSAU TRANSITION (ZQA DEKAL5): From over ZQA VOR/DME on ZQA R-315 to CAREY, then on ZBV R-100 to ZBV VORTAC, then on ZBV R-300 to DEKAL. Thence. . . .

URSUS TRANSITION (URSUS DEKAL5): From over URSUS on ZBV R-177 to ZBV VORTAC, then on ZBV R-300 to DEKAL. Thence. . . .

. . . .from over DEKAL expect RADAR vectors to final approach course.



NOTE: Chart not to scale.

SE-3, 21 MAY 2020 to 18 JUN 2020