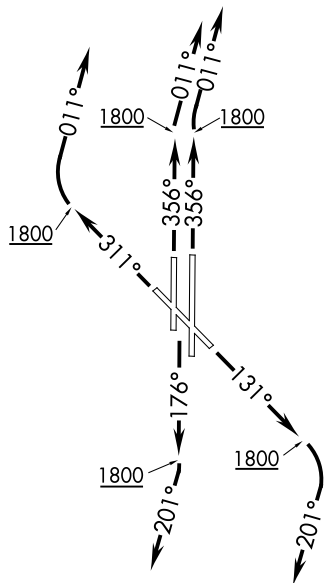


TEBRD THREE DEPARTURE (RNAV)

**TOP ALTITUDE:
ASSIGNED BY ATC**

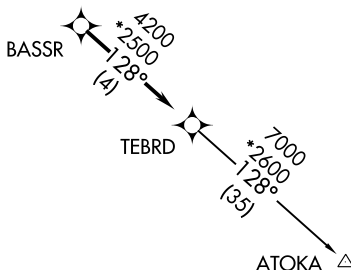
ATIS
128.725
GND CON
121.7

WILEY POST TOWER ★
126.9 306.9
OKE CITY DEP CON
124.6 266.8



TAKEOFF MINIMUMS

Rwys 13, 17L/R, 31, 35L/R:
Standard with minimum climb
of 500' per NM to 2100.



- NOTE: RADAR required.
- NOTE: DME/DME/IRU or GPS required.
- NOTE: RNAV 1.

NOTE: Chart not to scale.

DEPARTURE ROUTE DESCRIPTION

- TAKEOFF RWY 13: Climb heading 131° to 1800, then right turn heading 201° or as assigned by ATC, expect RADAR vectors to BASSR, thence
- TAKEOFF RWYS 17L/R: Climb on heading 176° to 1800, then right turn heading 201° or as assigned by ATC, expect RADAR vectors to BASSR, thence
- TAKEOFF RWY 31: Climb on heading 311° to 1800, then right turn heading 011° or as assigned by ATC, expect RADAR vectors to BASSR, thence
- TAKEOFF RWY 35L: Climb on heading 356° to 1800, then heading 011° or as assigned by ATC, expect RADAR vectors to BASSR, thence
- TAKEOFF RWY 35R: Climb on heading 356° to 1800, then right turn heading 011° or as assigned by ATC, expect RADAR vectors to BASSR, thence

. . . . on track 128° to TEBRD, then on (transition). Maintain 3000 or as assigned by ATC. Expect filed altitude 10 minutes after departure.

ATOKA TRANSITION (TEBRD3.ATOKA)

SC-1, 21 MAY 2020 to 18 JUN 2020

SC-1, 21 MAY 2020 to 18 JUN 2020