

RNAV (GPS) RWY 17R

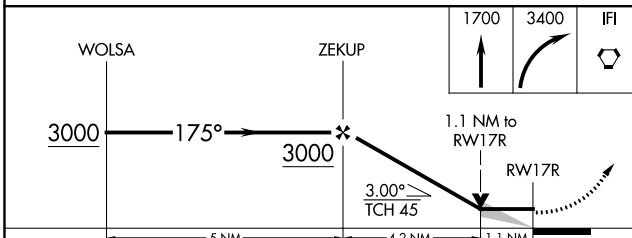
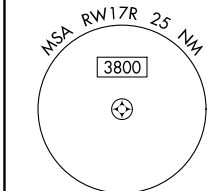
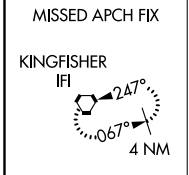
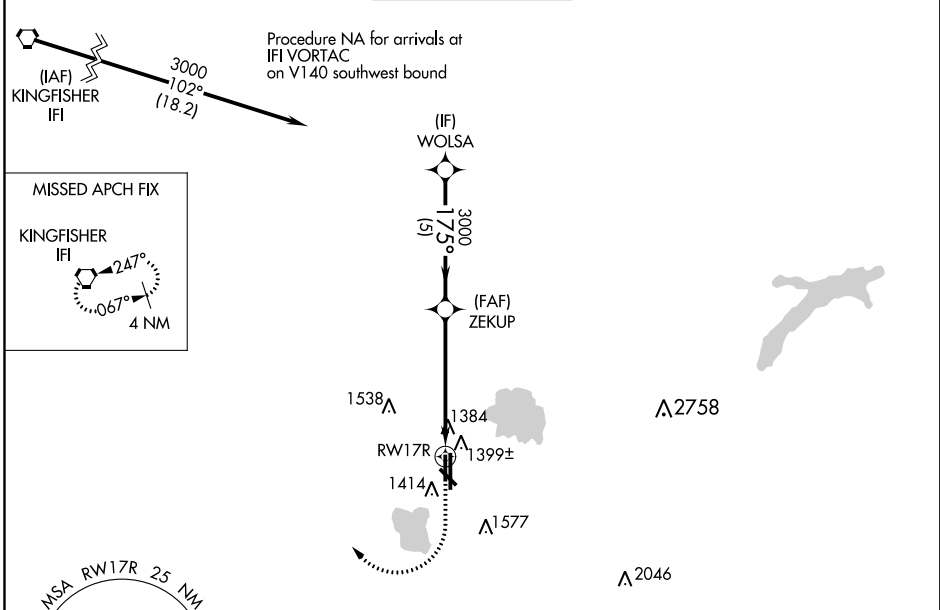
WILEY POST (PWA)

APP CRS	Rwy Idg	5002
175°	TDZE	1283
	Apt Elev	1300

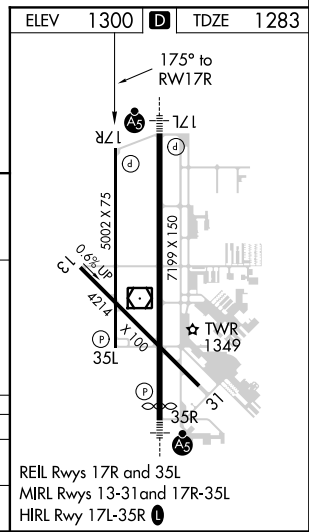
⚠ DME/DME RNP-0.3 NA, VDP NA when using Will Rogers World altimeter setting.
⚠ When local altimeter setting not received, use Will Rogers World altimeter setting and increase all MDA 40 feet; increase LNAV Cat C/D visibility 1/8 mile, Circling Cat C 1/4 mile.
ASR

MISSED APPROACH: Climb to 1700 then climbing right turn to 3400 direct IFI VORTAC and hold.

ATIS 128.725	OKE CITY APP CON 124.6 266.8	WILEY POST TOWER ★ 126.9 (CTAF) 306.9	GND CON 121.7	UNICOM 122.95
-------------------------------	---	--	--------------------------------	--------------------------------



CATEGORY	A	B	C	D
LNAV MDA	1660-1		377 (400-1)	
C CIRCLING	1780-1	480 (500-1)	1880-1½ 580 (600-1½)	1880-2 580 (600-2)



SC-1, 21 MAY 2020 to 18 JUN 2020

SC-1, 21 MAY 2020 to 18 JUN 2020