

MAYPORT, FLORIDA

# TACAN Rwy 5

TACAN NRB Chan 51	APCH CRS 055°	Rwy Idg 8001 TDZE 12 Arpt Elev 15	AL-722 [USN]
			MAYPORT NS (ADM DAVID L. MC DONALD FLD) (KNRB)

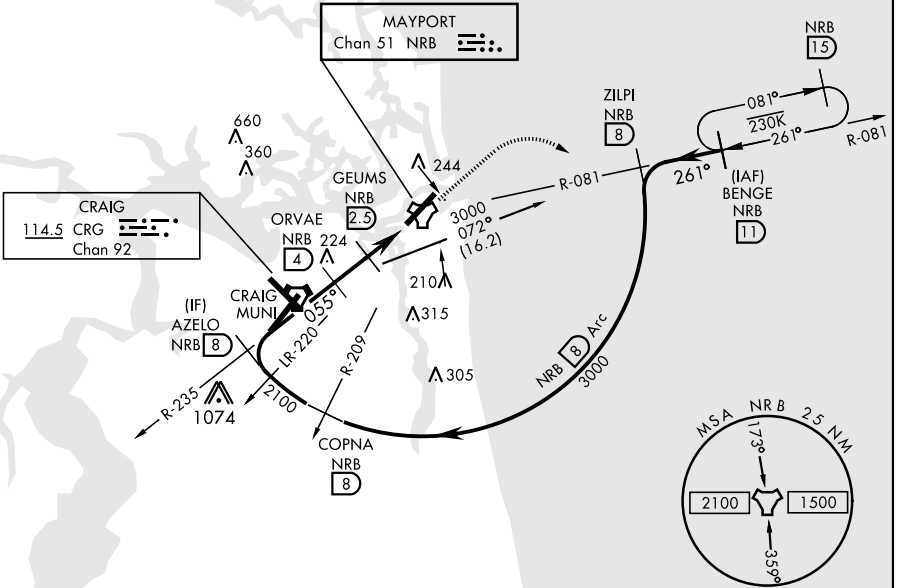
Circling not authorized to Rwy 23 at night when VGSI inop on Rwy 23, unless the station has an approved observer watching for marine traffic in the St. John's River channel.

**MISSED APPROACH:** Climb to 500. Then climbing right turn to 3000 via NRB TACAN R-081 to BENGÉ and hold, continue climb in hold to 3000.

ATIS ★ 236.775	JACKSONVILLE APP CON 124.9 308.4	MAYPORT TOWER ★ 118.75 239.3	GND CON 126.5 233.7	ASR/PAR
-------------------	-------------------------------------	---------------------------------	------------------------	---------

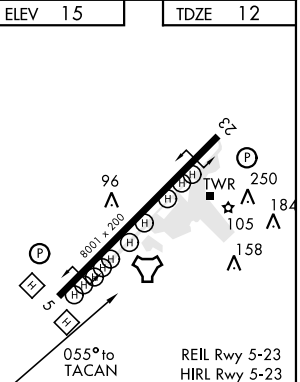
CAUTION: Intmed seg len 4 NM.

CRG feeder requires turn in hold.



EMERG SAFE ALT 100 NM 2800

	ELEV 15		TDZE 12	
	BENGÉ NRB R-081 (11)	ZILPI R-081 (8)	COPNA R-209 (8)	AZELO NRB R-235 (8)
	ORVAE (4)	GEUMS (2.5)	INEKE (1)	TACAN
	500	3000 NRB R-081	BENGÉ R-081 (11)	
	3000	2100	1200	640
	1.5 NM		1.5 NM	
CATEGORY	A	B	C	D
S-5	440-1	428 (500-1)	440-1½ 428 (500-1½)	
CIRCLING*	560-1	545 (600-1)	560-1½ 545 (600-1½)	640-2 625 (700-2)



MAYPORT, FLORIDA

30°23'N-81°25'W MAYPORT NS (ADM DAVID L. MC DONALD FLD) (KNRB)

Amcl 3 19JUL18

# TACAN Rwy 5

SE-3, 21 MAY 2020 to 18 JUN 2020

SE-3, 21 MAY 2020 to 18 JUN 2020