

MAYPORT, FLORIDA

TACAN RWY 23

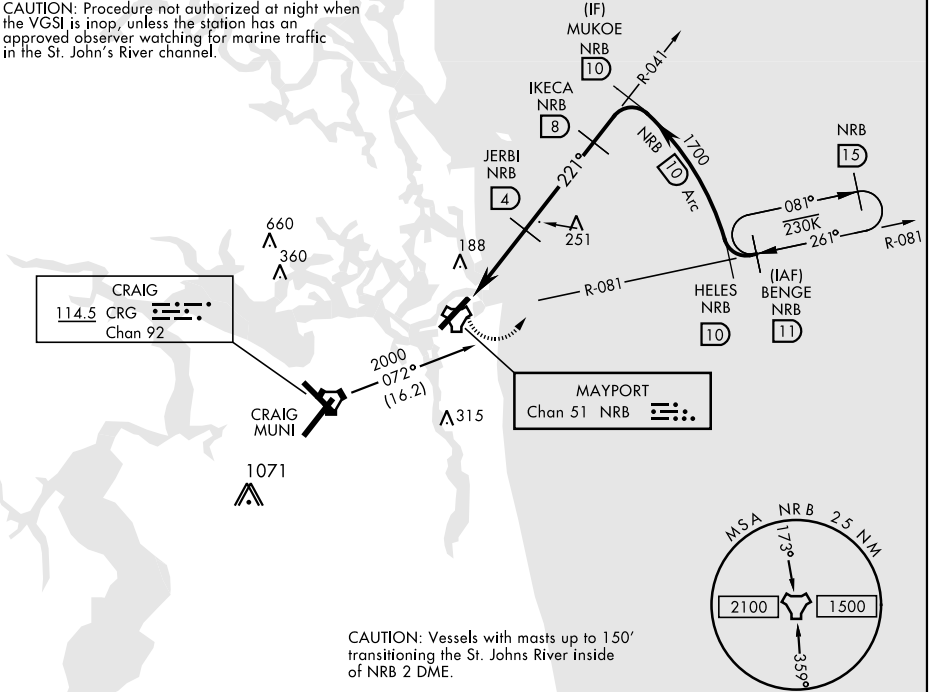
TACAN Chan 51	NRB 221°	APCH CRS 221°	Rwy Idg 8001 TDZE 15 Arprt Elev 15	AL-722 [USN] MAYPORT NS (ADM DAVID L. MC DONALD FLD) (KNRB)
-------------------------	--------------------	-------------------------	--	--

▽ MISSED APPROACH: Climbing left turn to 2000 via NRB TACAN R-081 to BENGÉ and hold.

ATIS ★ 236.775	JACKSONVILLE APP CON 124.9 308.4	MAYPORT TOWER ★ 118.75 239.3	GND CON 126.5 233.7	ASR/PAR
--------------------------	--	--	-------------------------------	---------

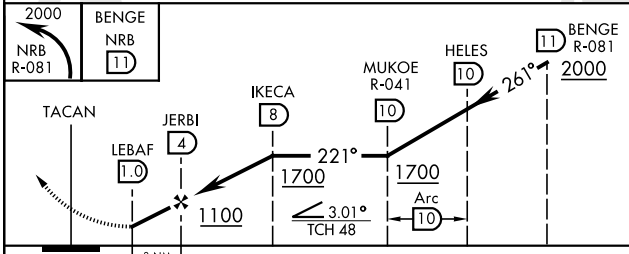
CRG feeder route requires turn in hold.

CAUTION: Procedure not authorized at night when the VGS1 is inop, unless the station has an approved observer watching for marine traffic in the St. John's River channel.



CAUTION: Vessels with masts up to 150' transiting the St. Johns River inside of NRB 2 DME.

EMERG SAFE ALT 100 NM 2800



ELEV 15	TDZE 15
---------	---------

REIL Rwy 5-23
HIRL Rwy 5-23

CATEGORY	A	B	C	D
S-23	520-1 505 (600-1)	520-1 505 (600-1)	520-1 505 (600-1)	520-1 505 (600-1)
CIRCLING	560-1 545 (600-1)	560-1 545 (600-1)	560-1 545 (600-1)	640-2 625 (700-2)

MAYPORT, FLORIDA 30°23'N-81°25'W MAYPORT NS (ADM DAVID L. MC DONALD FLD) (KNRB)

Amtd 4 19JUL18

TACAN RWY 23

SE-3, 21 MAY 2020 to 18 JUN 2020

SE-3, 21 MAY 2020 to 18 JUN 2020