

MAYPORT, FLORIDA

COPTER TACAN RWY 5

TACAN NRB Chan 51	APCH CRS 055°	Rwy ldg TDZE 8001 Arpt Elev 12 15
--------------------------	----------------------	--------------------------------------------------------------

AL-722 [USN]

MAYPORT NS (ADM DAVID L. MC DONALD FLD)(KNRB)

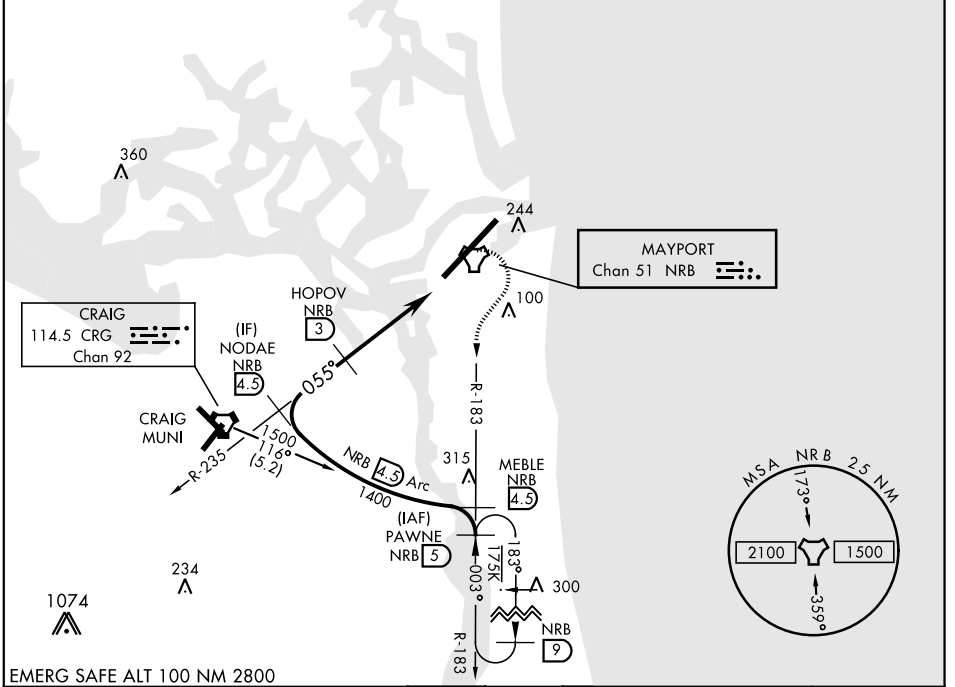
▼ **CAUTION:** When Rwy 23 VGSi inop, Circling to Rwy 23 NA at night.

† **MISSED APPROACH:** Climb to 500. Then climbing right turn to 1500 via NRB TACAN R-183 to PAWNE and hold.

ATIS ★ 236.775	JACKSONVILLE APP CON 124.9 308.4	MAYPORT TOWER ★ 118.75 239.3	GND CON 126.5 233.7	ASR/PAR
-----------------------	-----------------------------------------	-------------------------------------	----------------------------	---------

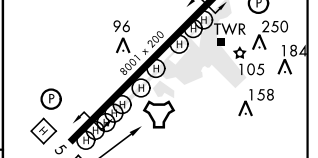
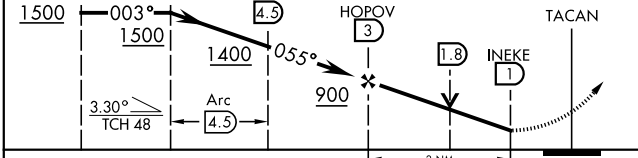
† Missed approach requires use of RNAV or ATC radar monitoring.

CAUTION: Intmed seg len 1.5 NM.
Max airspeed 90 KIAS



EMERG SAFE ALT 100 NM 2800

PAWNE R-183 (5)	MEBLE R-183 (4.5)	NODAE R-235 (4.5)	HOPOV (3)	500	1500	PAWNE NRB (5)	ELEV 15	TDZE 12
-----------------	-------------------	-------------------	-----------	-----	------	---------------	---------	---------



CATEGORY	COPTER			REIL Rwy 5-23 HIRL Rwy 5-23
S-5	440-½	428	(500-½)	
CIRCLING	560-1	545	(600-1)	

MAYPORT, FLORIDA
Amdt 3 19JUL18

30°23'N-81°25'W

MAYPORT NS (ADM DAVID L. MC DONALD FLD) (KNRB)

COPTER TACAN RWY 5

SE-3, 21 MAY 2020 to 18 JUN 2020

SE-3, 21 MAY 2020 to 18 JUN 2020