

MAYPORT, FLORIDA

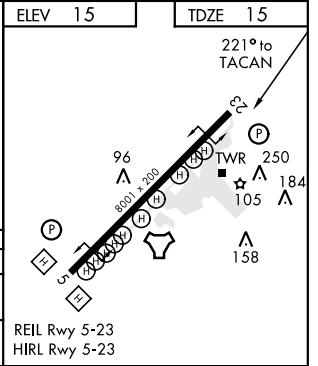
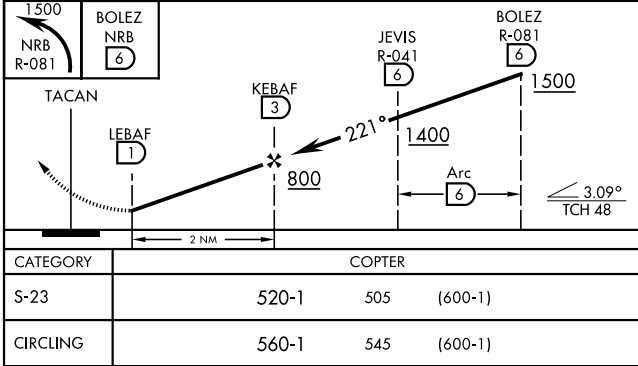
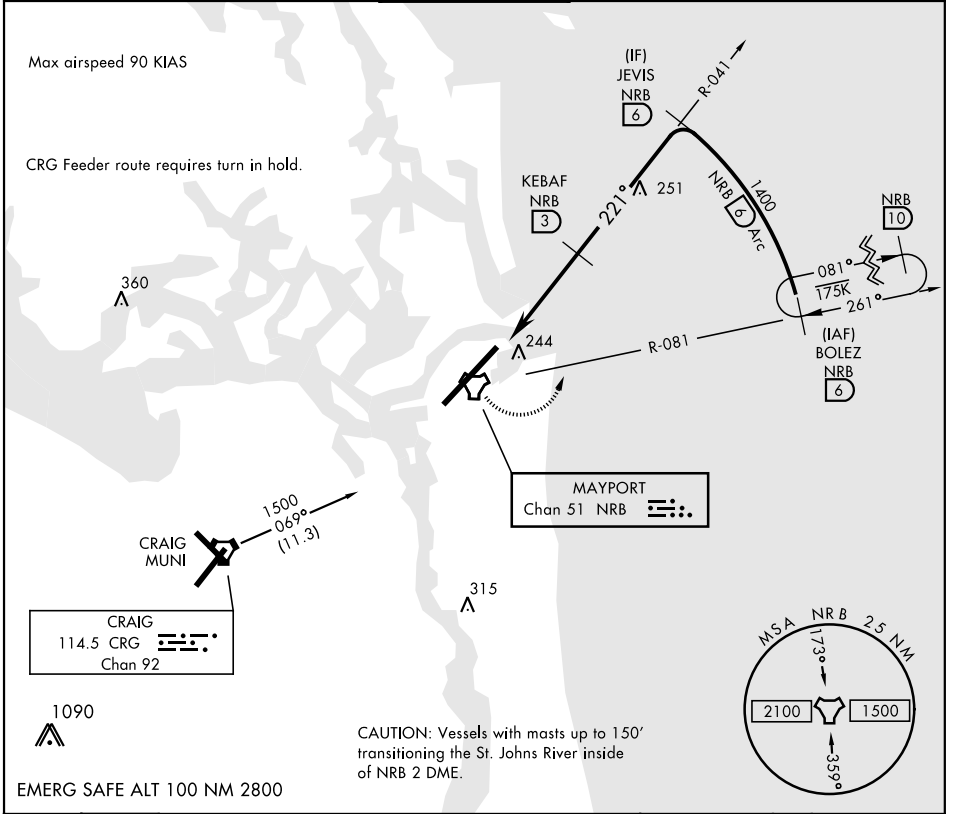
# COPTER TACAN RWY 23

TACAN NRB Chan 51	APCH CRS 221°	Rwy Idg TDZE 15 Arprt Elev 15	AL-722 [USN]	MAYPORT NS (ADM DAVID L. MC DONALD FLD)(KNRB)
-------------------	---------------	----------------------------------	--------------	---

**CAUTION:** Procedure is not authorized at night when the VGSI is inop, unless the station has an approved observer watching for marine traffic in the St. John's River Channel.

**MISSED APPROACH:** Climbing left turn to 1500 via NRB TACAN R-081 to BOLEZ and hold.

ATIS ★ 236.775	JACKSONVILLE APP CON 124.9 308.4	MAYPORT TOWER ★ 118.75 239.3	GND CON 126.5 233.7	ASR/PAR
-------------------	-------------------------------------	---------------------------------	------------------------	---------



MAYPORT, FLORIDA 30°23'N-81°25'W MAYPORT NS (ADM DAVID L. MC DONALD FLD)(KNRB)

Amr 2 19JUL18

# COPTER TACAN RWY 23

SE-3, 21 MAY 2020 to 18 JUN 2020

SE-3, 21 MAY 2020 to 18 JUN 2020