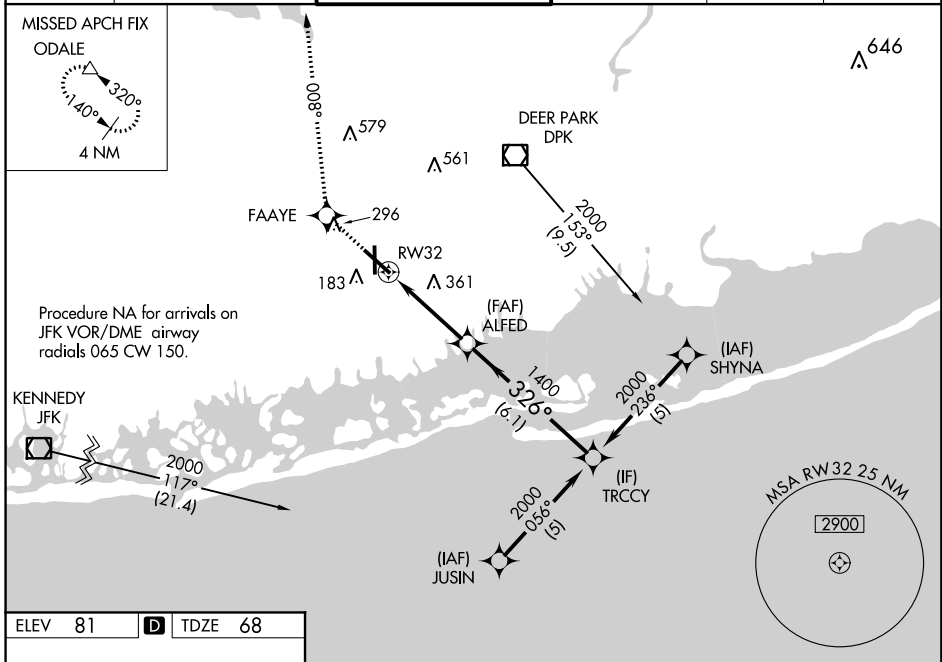


WAAS CH 70715 W32A	APP CRS 326°	Rwy Idg TDZE Apt Elev	6833 68 81
--	------------------------	-----------------------------	---------------------------------------

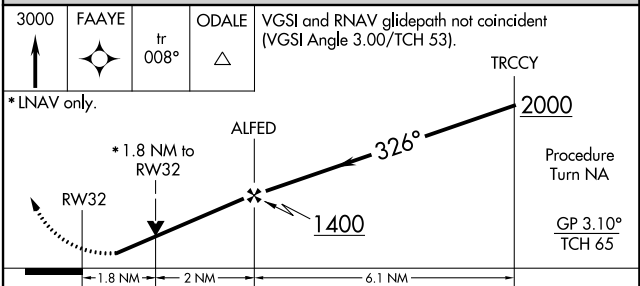
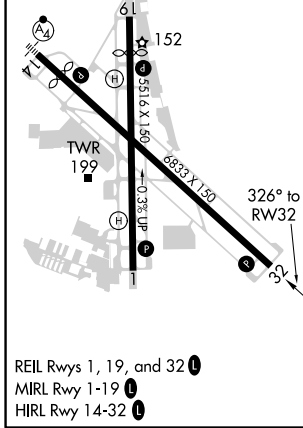
RNAV (GPS) RWY 32

REPUBLIC (F'R.G)

RNP APCH.		REPUBLIC TOWER ★		GND CON	CLNC DEL	UNICOM			
<p>Baro-VNAV NA when using Isip altimeter setting. For uncompensated Baro-VNAV systems, LNAV/VNAV NA below -15°C or above 38°C. Rwy 32 helicopter visibility reduction below 1 SM NA. When local altimeter setting not received, use Isip altimeter setting and increase all DA 37 feet and all MDA 40 feet; increase LNAV/VNAV all Cats and Circling Cat C and D visibility ¼ mile. VDP NA when using Isip altimeter setting.</p>		<p>MISSED APPROACH: Climb to 3000 direct FAAYE and on track 008° to ODALE and hold.</p>		126.65	128.125 269.0	118.8 (CTAF) 279.65	121.6 269.6	128.25	122.95



ELEV 81	D	TDZE 68
---------	----------	---------



CATEGORY	A	B	C	D
LPV DA		369-1	301 (300-1)	
LNAV/VNAV DA		761-2¼	693 (700-2¼)	
LNAV MDA	680-1	612 (600-1)	680-1¾ 612 (600-1¾)	680-2 612 (600-2)
CIRCLING	680-1	599 (600-1)	720-1¾ 639 (700-1¾)	720-2 639 (700-2)

NE-2, 21 MAY 2020 to 18 JUN 2020

NE-2, 21 MAY 2020 to 18 JUN 2020