

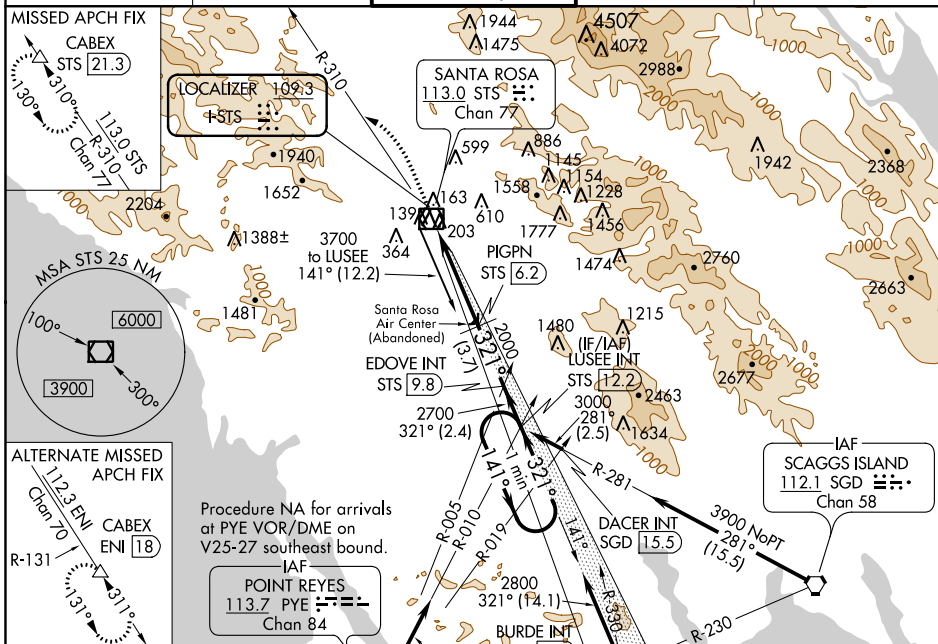
LOC I-STS 109.3	APP CRS 321°	Rwy Idg TDZE Apt Elev	6000 122 129
---------------------------	------------------------	-----------------------------	---

ILS or LOC/DME RWY 32

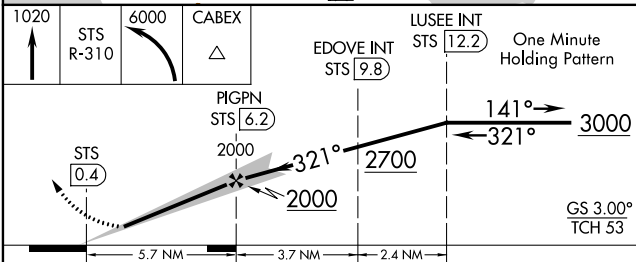
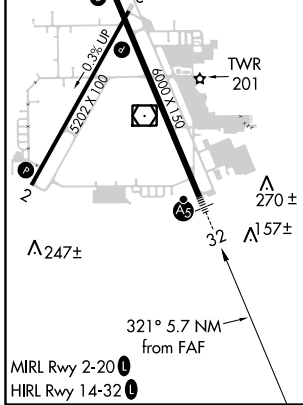
CHARLES M SCHULZ-SONOMA COUNTY (STS)

DME required.	MALSR	MISSED APPROACH: Climb to 1020 on STS VOR/DME R-310 and climbing left turn to 6000 to CABEX/STS 21.3 DME and hold, continue climb-in-hold to 6000.
---------------	-------	--

ATIS 120.55	OAKLAND CENTER 127.8 353.5	SANTA ROSA TOWER* 118.5 (CTAF) 0 363.0	GND CON 121.9	UNICOM 122.95
-----------------------	--------------------------------------	--	-------------------------	-------------------------



ELEV 129	TDZE 122
----------	----------



CATEGORY	A	B	C	D
S-ILS 32	377/24		255 (300-½)	
S-LOC 32	580/24	458 (500-½)	580/45	458 (500-¾)
C CIRCLING	600-1 471 (500-1)	680-1 551 (600-1)	1080-3 951 (1000-3)	1420-3 1291 (1300-3)

SW-2, 21 MAY 2020 to 18 JUN 2020

SW-2, 21 MAY 2020 to 18 JUN 2020