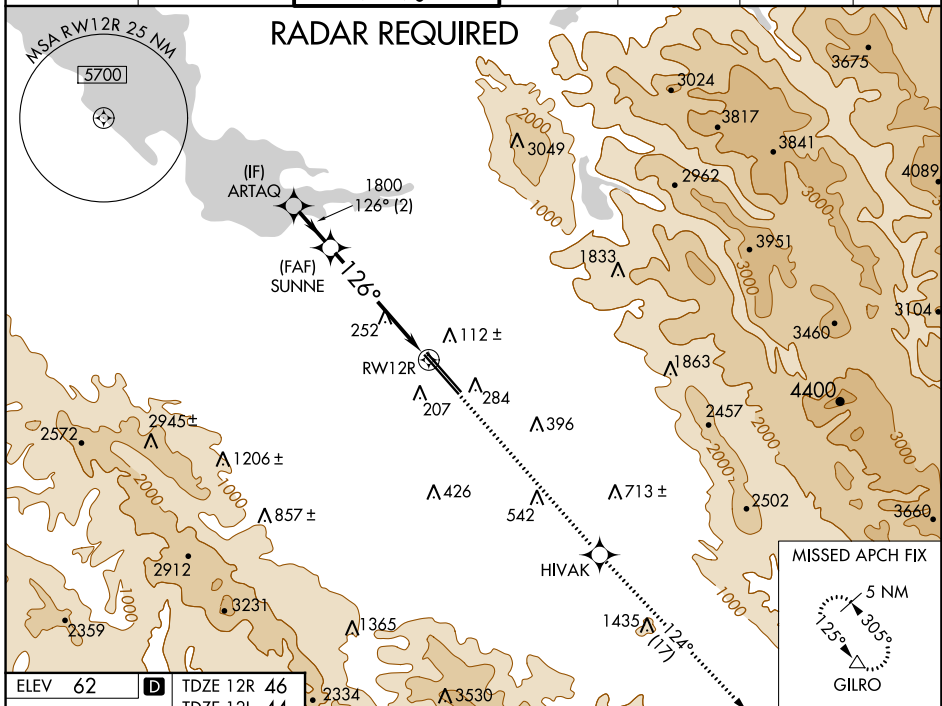


WAAS CH 90106 W12A	APP CRS 126°	Rwy Idg 8587	12R 8833
		TDZE 46	44
		Apt Elev 62	62

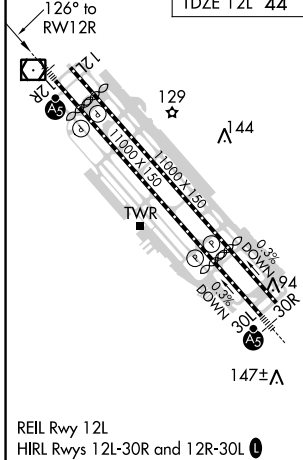
RNAV (GPS) Y RWY 12R

NORMAN Y MINETA SAN JOSE INTL (SJC)

For uncompensated Baro-VNAV systems, LNAV/VNAV NA below -1°C (31°F) or above 54°C (130°F). DME/DME RNP-0.3 NA. For inoperative MALSR, increase LNAV/VNAV all Cats visibility to 1 mile and LNAV Cats C/D visibility to 1 1/2 mile.	MALS Rwy 12R 		MISSED APPROACH: Climb to 4600 direct HIVAK and on track 124° to GILRO and hold.			
	D-ATIS 126.95	NORCAL APP CON 120.1 290.25	SAN JOSE TOWER ★ 124.0 (CTAF) 257.6	GND CON 121.7	CLNC DEL 118.0	CPDLC



ELEV 62	D	TDZE 12R 46
		TDZE 12L 44



VGSI and RNAV glidepath not coincident (VGSI Angle 3.00/TCH 75).

4600	HIVAK	tr 124°	GILRO
------	-------	---------	-------

*LNAV only

GP 3.00° TCH 58	ARTAQ		SUNNE		RWY 12R	
	1800		1800		147±	
	2 NM		4.1 NM		1.3 NM	
CATEGORY	A		B		D	
LPV DA	246-1/2		200 (200-1/2)			
LNAV/VNAV DA	371-5/8 325 (400-3/8)		371-1 325 (400-1)			
LNAV MDA	520-1/2 474 (500-1/2)		520-1 474 (500-1)			
SIDESTEP 12L	520-1 476 (500-1)		520-1 1/2 476 (500-1 1/2)		520-2 476 (500-2)	

SW-2, 21 MAY 2020 to 18 JUN 2020

SW-2, 21 MAY 2020 to 18 JUN 2020