

WAAS CH <b>69501</b> <b>W12B</b>	APP CRS <b>126°</b>	Rwy Idg TDZE Apt Elev	<b>8833</b> <b>44</b> <b>62</b>
--	------------------------	-----------------------------	---------------------------------------

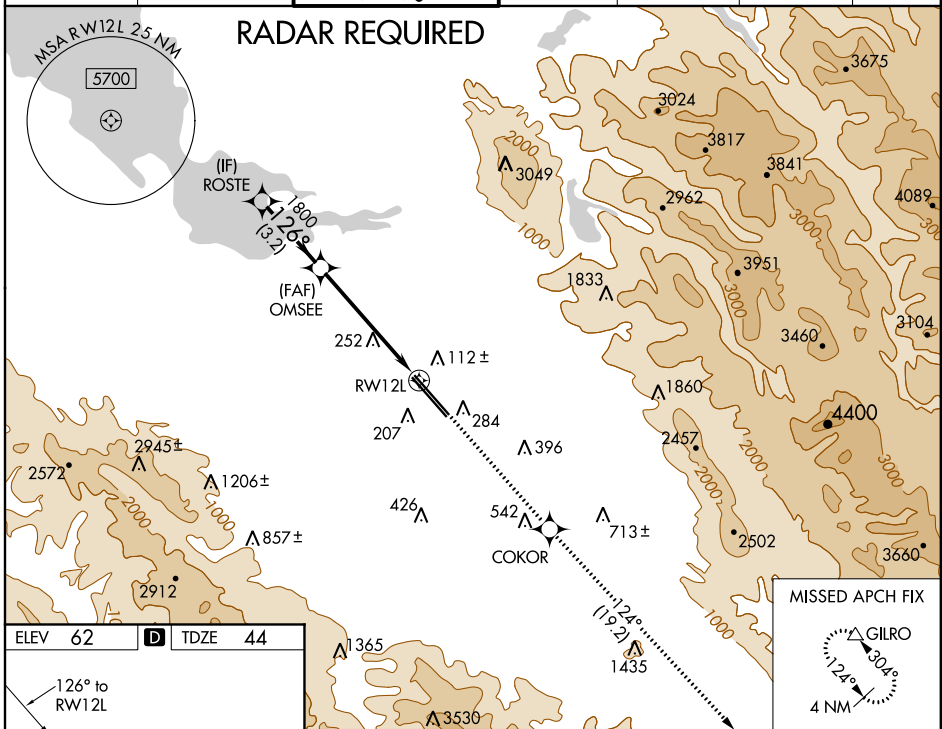
# RNAV (GPS) Y RWY 12L

NORMAN Y MINETA SAN JOSE INTL (SJC)

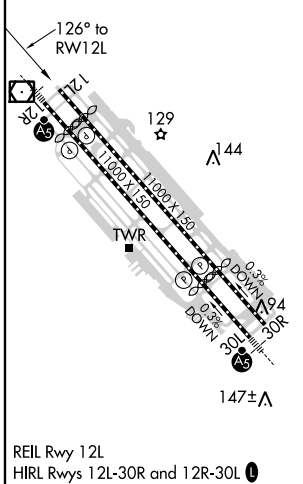
**▽** For uncompensated Baro-VNAV systems, LNAV/VNAV NA below -1°C (31°F) or above 54°C (130°F). DME/DME RNP-0.3 NA.

MISSED APPROACH: Climb to 4600 direct COKOR and on track 124° to GILRO and hold.

D-ATIS <b>126.95</b>	NORCAL APP CON <b>120.1 290.25</b>	SAN JOSE TOWER ★ <b>124.0</b> (CTAF) <b>0 257.6</b>	GND CON <b>121.7</b>	CLNC DEL <b>118.0</b>	CPDLC	UNICOM <b>122.95</b>
-------------------------	---------------------------------------	--	-------------------------	--------------------------	-------	-------------------------



ELEV 62	<b>D</b>	TDZE 44
---------	----------	---------



REIL Rwy 12L  
HIRL Rwy's 12L-30R and 12R-30L **⦿**

VGSI and RNAV glidepath not coincident (VGSI Angle 3.00/TCH 70).

ROSTE	OMSEE	4600	COKOR	GILRO
			↑	⬠
			Ir 124°	△
				*LNAV only

GP 3.00°	TCH 57			
CATEGORY	A	B	C	D
LPV	DA	294- <sup>3</sup> / <sub>4</sub>	250 (300- <sup>3</sup> / <sub>4</sub> )	
LNAV/VNAV	DA	341-1	297 (300-1)	
LNAV MDA	520-1	476 (500-1)	520-1 <sup>3</sup> / <sub>8</sub>	476 (500-1 <sup>3</sup> / <sub>8</sub> )

SW-2, 21 MAY 2020 to 18 JUN 2020

SW-2, 21 MAY 2020 to 18 JUN 2020