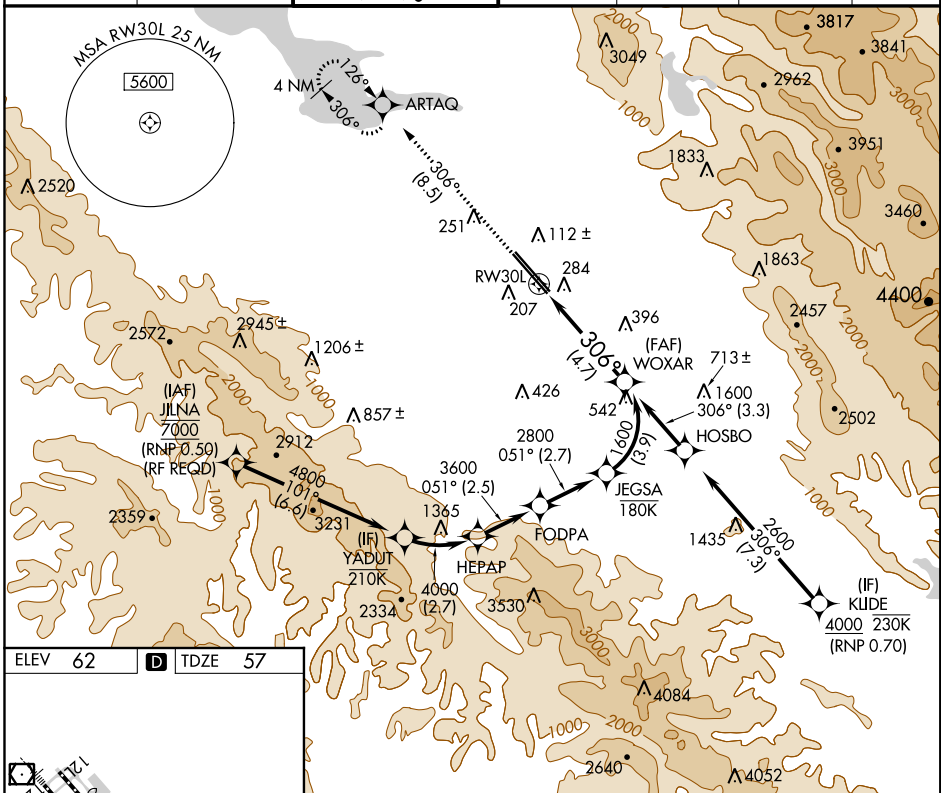


APP CRS	Rwy ldg	<b>7614</b>
<b>306°</b>	TDZE	<b>57</b>
	Apt Elev	<b>62</b>

# RNAV (RNP) Z RWY 30L

NORMAN Y MINETA SAN JOSE INTL (SJC)

<p><b>▼</b> For uncompensated Baro-VNAV systems, procedure NA below -1°C (31°F) or above 54°C (130°F). GPS required. For inoperative MALSR, increase RNP 0.15 all Cats visibility to RVR 6000 and increase RNP 0.30 all Cats visibility to 1½ mile.</p>				<p>MALSR</p> <p>MISSED APPROACH: Climb to 2300 on track 306° to ARTAQ and hold.</p>		
D-ATIS	NORCAL APP CON	SAN JOSE TOWER ★	GND CON	CLNC DEL	CPDLC	UNICOM
<b>126.95</b>	<b>120.1 290.25</b>	<b>124.0 (CTAF) 0 257.6</b>	<b>121.7</b>	<b>118.0</b>		<b>122.95</b>



ELEV 62	<b>D</b>	TDZE 57
---------	----------	---------

Planview diagram of RWY 30L showing glide paths for RNP 0.15 and RNP 0.30. Key data points include:
 

- Altitudes: 129, 144, 147±, 129, 1100, 1150, 1100, 1150, 1000, 900, 800, 700, 600, 500, 400, 300, 200, 100.
- Angles: 306° to RWY 30L, 147±.
- Other: TWR, REIL Rwy 12L, HIRL Rwys 12L-30R and 12R-30L.

2300	ARTAQ	VGSI and RNAV glidepath not coincident (VGSI Angle 3.00/TCH 70).	WOXAR
↑			1600
tr 306°		See planview for multiple IF locations.	
	RW30L		1600
			GP 3.00°
			TCH 54
		-4.7 NM	

CATEGORY	A	B	C	D
RNP 0.15 DA		421/40	364 (400-¾)	
RNP 0.30 DA		544/60	487 (500-1¼)	

**AUTHORIZATION REQUIRED**