

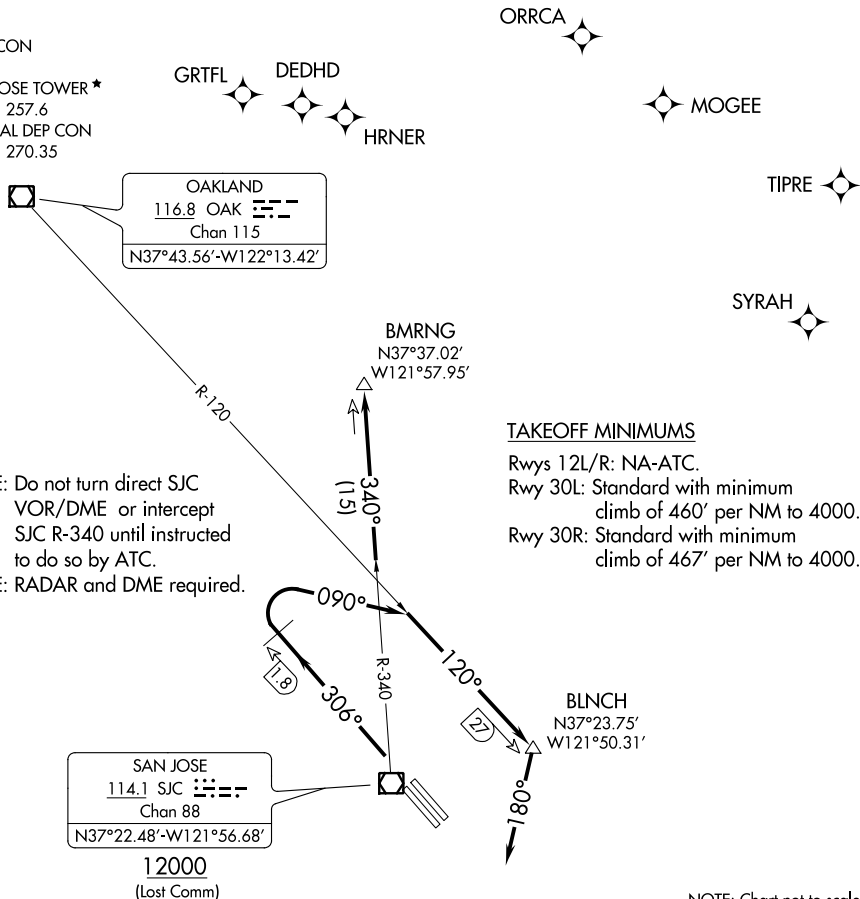
(LOUPE5.BMRNG) 19143  
**LOUPE FIVE DEPARTURE**

NORMAN Y MINETA SAN JOSE INTL (SJC)  
 SAN JOSE, CALIFORNIA

AL-693 (FAA)

D-ATIS  
 126.95  
 CLNC DEL  
 118.0  
 CPDLC  
 GND CON  
 121.7  
 SAN JOSE TOWER ★  
 124.0 257.6  
 NORCAL DEP CON  
 121.3 270.35

**TOP ALTITUDE:  
 5000**



SW-2, 21 MAY 2020 to 18 JUN 2020

SW-2, 21 MAY 2020 to 18 JUN 2020

NOTE: Chart not to scale.



**DEPARTURE ROUTE DESCRIPTION**

**TAKEOFF RUNWAYS 30L/R:** Climb heading 306°, at SJC VOR/DME 1.8 DME northwest turn right heading 090° to intercept OAK R-120 to BLNCH, then turn right heading 180° for RADAR vectors to SJC VOR/DME, then on SJC R-340 to BMRNG INT. Maintain 5000, expect filed altitude 10 minutes after departure.

**LOST COMMUNICATIONS**

**RUNWAYS 30L/R:** If not in contact with departure control upon reaching BLNCH, depart BLNCH heading 180°. When able turn right direct SJC VOR/DME, cross SJC VOR/DME at or above 12000, then on SJC R-340 to BMRNG INT before proceeding on course.

(LOUPE5.BMRNG) 25APR19  
**LOUPE FIVE DEPARTURE**

SAN JOSE, CALIFORNIA  
 NORMAN Y MINETA SAN JOSE INTL (SJC)