

LOC/DME I-SJC <b>110.9</b> Chan 46	APP CRS <b>306°</b>	Rwy Idg <b>7614</b> TDZE <b>57</b> Apt Elev <b>62</b>
--	------------------------	---

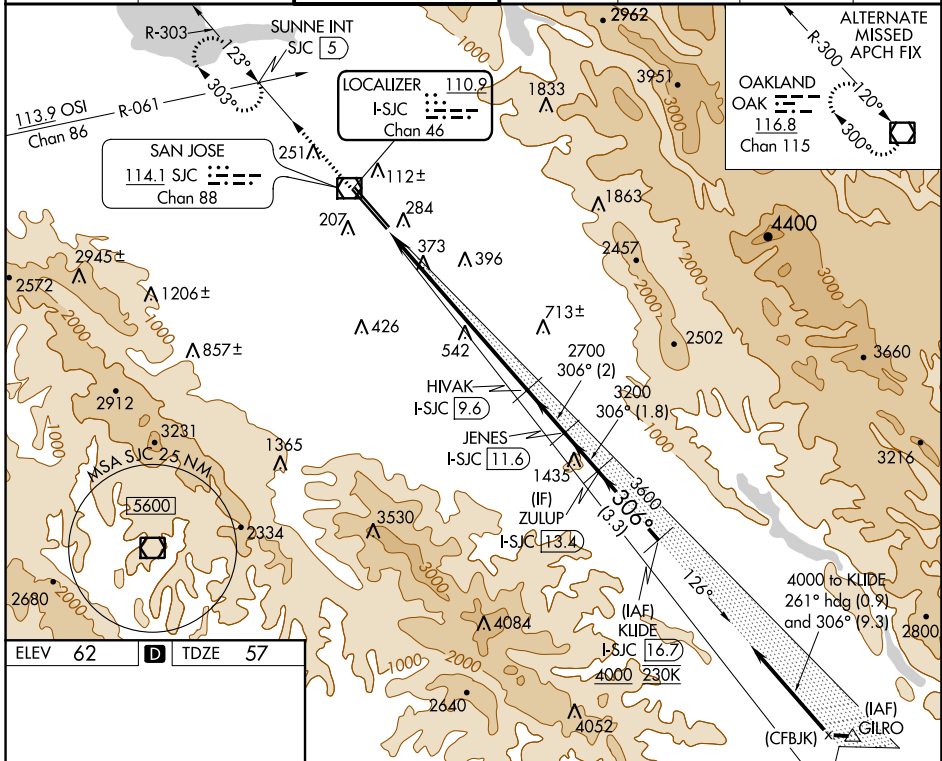
# ILS RWY 30L (SA CAT I & II)

NORMAN Y MINETA SAN JOSE INTL (SJC)

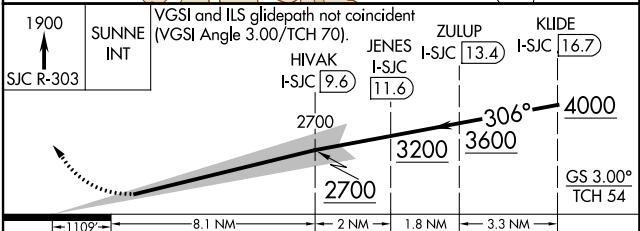
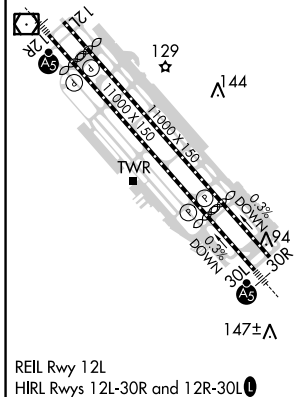
**▼** DME required. SA CAT I: Requires specific OPSPEC, MSPEC, or LOA approval and use of HUD to DH. SA CAT II: Reduced lighting: requires specific OPSPEC, MSPEC, or LOA approval and use of Autoland or HUD to touchdown.  
**▲** SA CAT I /II: NA when tower closed.

**MALSR** MISSED APPROACH: Climb to 1900 on SJC VOR/DME R-303 to SUNNE INT/SJC 5 DME and hold.

D-ATIS <b>126.95</b>	NORCAL APP CON <b>120.1 290.25</b>	SAN JOSE TOWER ★ <b>124.0 (CTAF) 0 257.6</b>	GND CON <b>121.7</b>	CLNC DEL <b>118.0</b>	CPDLC	UNICOM <b>122.95</b>
-------------------------	---------------------------------------	---	-------------------------	--------------------------	-------	-------------------------



ELEV 62	<b>D</b>	TDZE 57
---------	----------	---------



CATEGORY	A	B	C	D
S-ILS 30L	SA CAT I	RA 147/14	150 DA 207	
S-ILS 30L	SA CAT II	RA 97/12	100 DA 157	

**SA CATEGORY I & II ILS - SPECIAL AIRCREW AND AIRCRAFT CERTIFICATION REQUIRED**

SW-2, 21 MAY 2020 to 18 JUN 2020

SW-2, 21 MAY 2020 to 18 JUN 2020