

FAIRGROUNDS VISUAL RWYS 30L/R

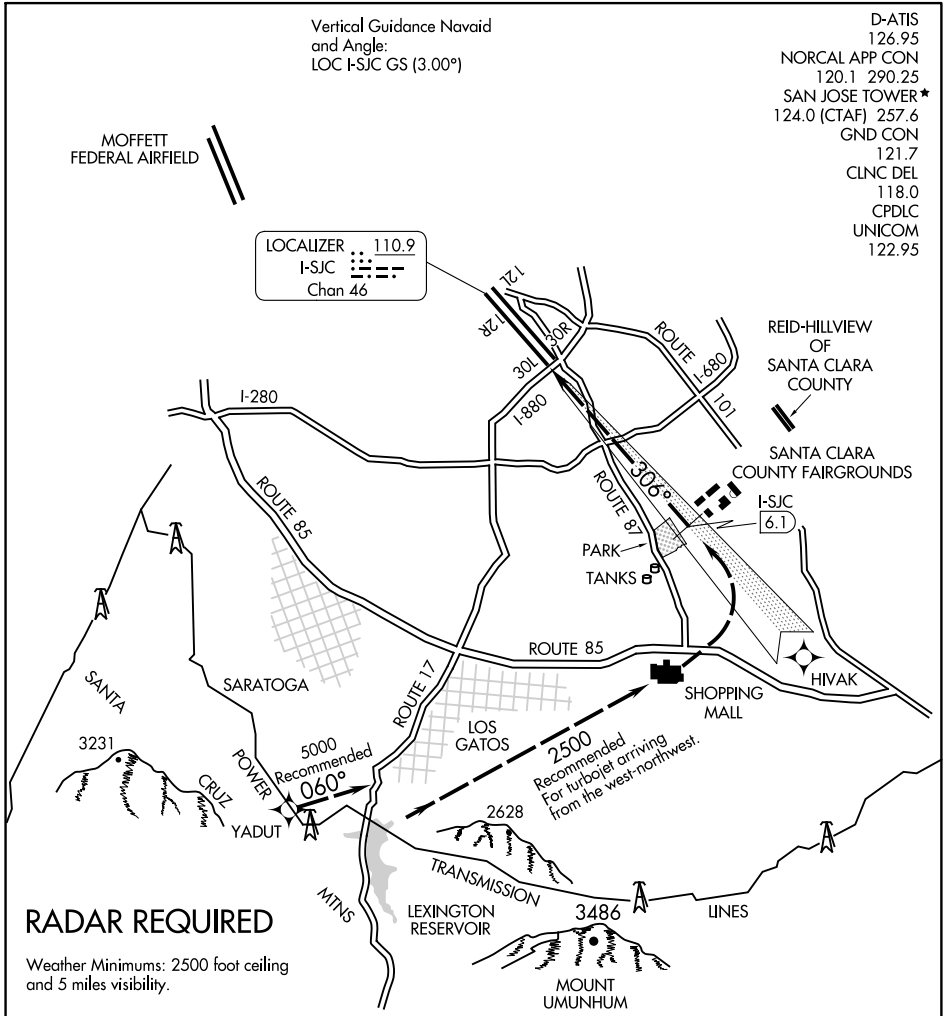
SAN JOSE, CALIFORNIA

Vertical Guidance Navaid
and Angle:
LOC I-SJC GS (3.00°)

- D-ATIS 126.95
- NORCAL APP CON 120.1 290.25
- SAN JOSE TOWER* 124.0 (CTAF) 257.6
- GND CON 121.7
- CLNC DEL 118.0
- CPDLC 118.0
- UNICOM 122.95

MOFFETT FEDERAL AIRFIELD

LOCALIZER 110.9
 I-SJC
 Chan 46



SW-2, 21 MAY 2020 to 18 JUN 2020

SW-2, 21 MAY 2020 to 18 JUN 2020

FAIRGROUNDS VISUAL APPROACH RUNWAYS 30L/R

When cleared for Fairgrounds Visual Approach, aircraft should turn final no closer than I-SJC 6.1 DME for noise abatement.

NOTE: Closely spaced parallel visual approaches may be in progress to Runways 30L/R. In the event of a go-around on Runway 30L, proceed straight-ahead heading 300°, or on Runway 30R, turn right heading 120°, climb and maintain 4000, or as directed by ATC.

FAIRGROUNDS VISUAL RWYS 30L/R

SAN JOSE, CALIFORNIA