

VOR RWY 6

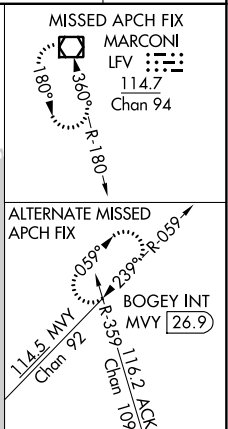
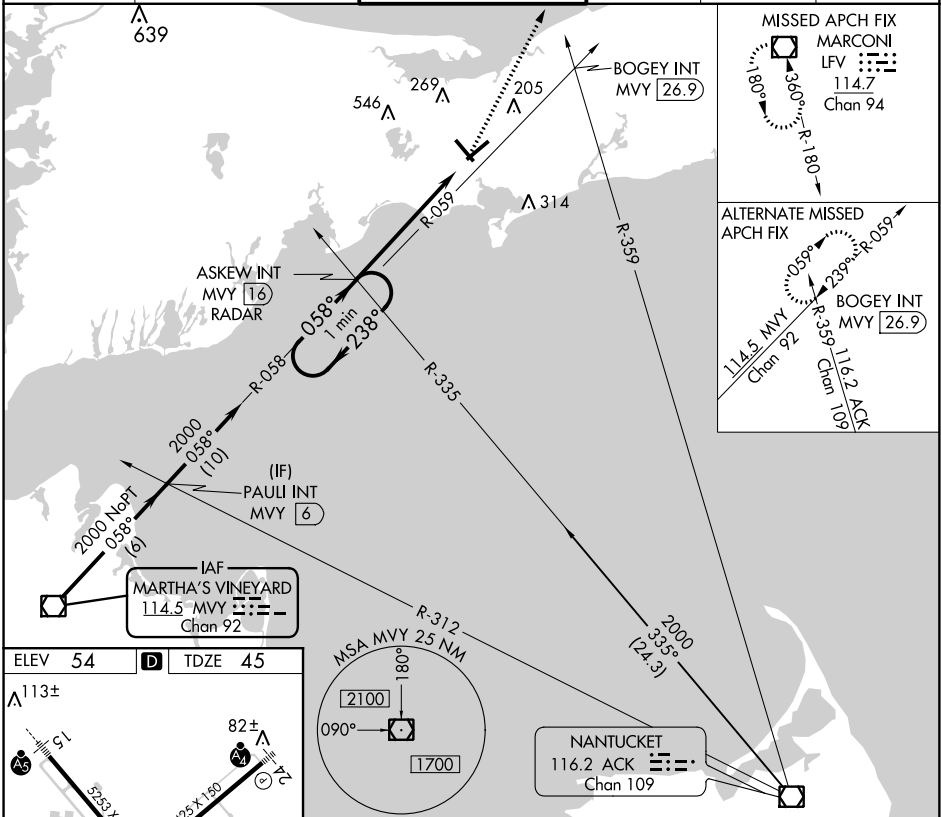
BARNSTABLE MUNI-BOARDMAN/POLANDO FIELD (HYA)

VOR/DME M ^{VY}	APP CRS	Rwy Idg	5019
114.5	058°	TDZE	45
Chan 92		Apf Elev	54

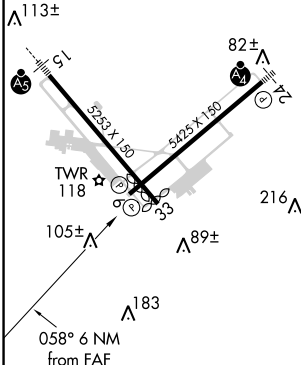
⚠ When local altimeter setting not received, use Chatham altimeter setting and increase all MDA's 40 feet and increase Circling Cat C/D visibility ¼ mile.

MISSED APPROACH: Climb to 2000 direct LFV VOR/DME and hold, continue climb-in-hold to 3000.

ATIS	BOSTON APP CON*	HYANNIS TOWER*	GND CON	CLNC DEL	UNICOM
123.8	118.2 284.6	119.5 (CTAF) 0 257.8	118.45	125.15	122.95



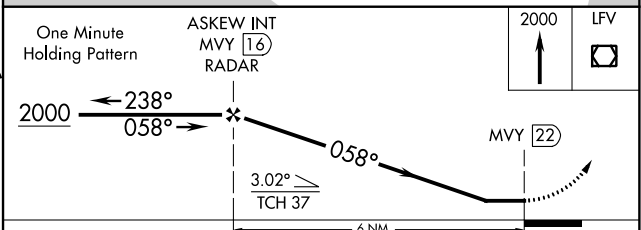
ELEV 54	TDZE 45
---------	---------



REIL Rwy 6
HIRL Rwys 6-24 and 15-33
FAF to MAP 6 NM

Knots	60	90	120	150	180
Min:Sec	6:00	4:00	3:00	2:24	2:00

CIRCLING



CATEGORY	A	B	C	D
S-6	900-1 855 (900-1)	900-1¼ 855 (900-1¼)	900-2½ 855 (900-2½)	855 (900-2½)
<input checked="" type="checkbox"/> CIRCLING	900-1¼	846 (900-1¼)	900-2½ 846 (900-2½)	900-2¾ 846 (900-2¾)

VOR RWY 6

NE-1, 21 MAY 2020 to 18 JUN 2020

NE-1, 21 MAY 2020 to 18 JUN 2020