

WAAS CH 99423 W33A	APP CRS 336°	Rwy Idg 5103 TDZE 50 Apt Elev 54
--	------------------------	---

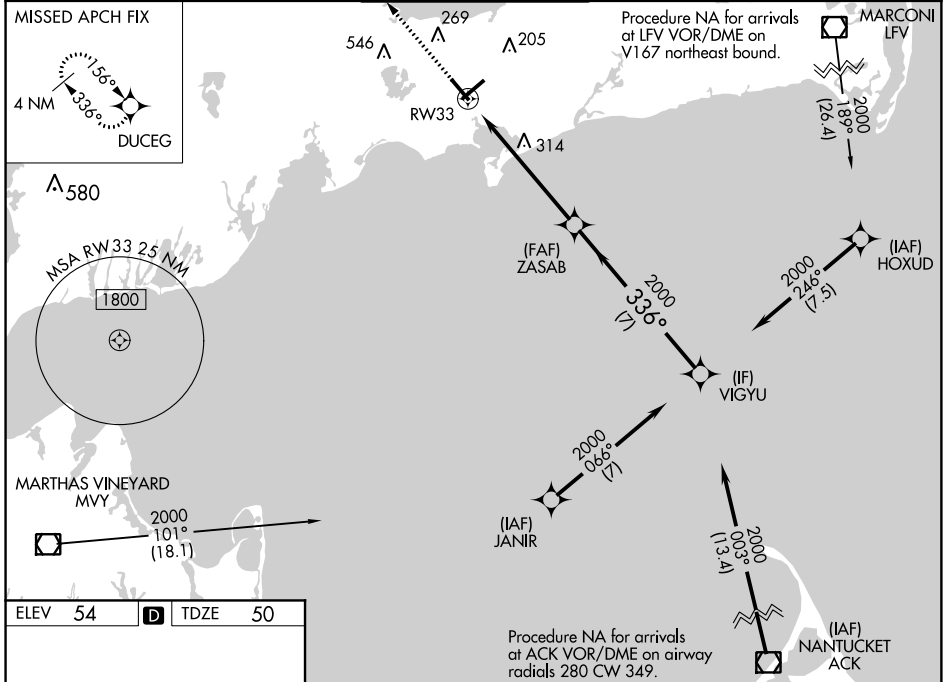
RNAV (GPS) RWY 33

BARNSTABLE MUNI-BOARDMAN/POLANDO FIELD (HYA)

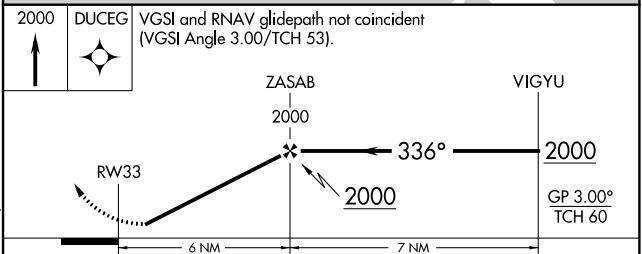
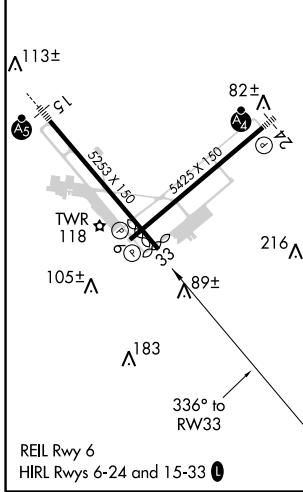
⚠ Baro-VNAV NA when using Chatham altimeter setting. For uncompensated Baro-VNAV systems, LNAV/VNAV NA below -15°C (5°F) or above 43°C (109°F). DME/DME RNP-0.3 NA. When local altimeter setting not received, use Chatham altimeter setting; increase LPV DA to 332 feet; increase LNAV/VNAV DA to 393 feet; increase all MDAs 40 feet and visibility Cats C and D ¼ SM. Helicopter visibility reduction below ¾ SM NA.

MISSED APPROACH: Climb to 2000 direct DUCEG and hold.

ATIS 123.8	BOSTON APP CON★ 118.2 284.6	HYANNIS TOWER★ 119.5 (CTAF) 0 257.8	GND CON 118.45	CLNC DEL 125.15	UNICOM 122.95
----------------------	---------------------------------------	---	--------------------------	---------------------------	-------------------------



ELEV 54	D	TDZE 50
---------	----------	---------



CATEGORY	A	B	C	D
LPV DA		300-1	250 (300-1)	
LNAV/VNAV DA		361-1	311 (400-1)	
LNAV MDA	620-1	570 (600-1)	620-1½	570 (600-1½)
C CIRCLING	620-1	566 (600-1)	860-2¼ 806 (900-2¼)	860-2½ 806 (900-2½)

NE-1, 21 MAY 2020 to 18 JUN 2020

NE-1, 21 MAY 2020 to 18 JUN 2020