

WAAS CH 61112 W15A	APP CRS 156°	Rwy Idg TDZE 54 Apt Elev 54	5253
--	------------------------	---	-------------

RNAV (GPS) RWY 15

BARNSTABLE MUNI-BOARDMAN/POLANDO FIELD (HYA)

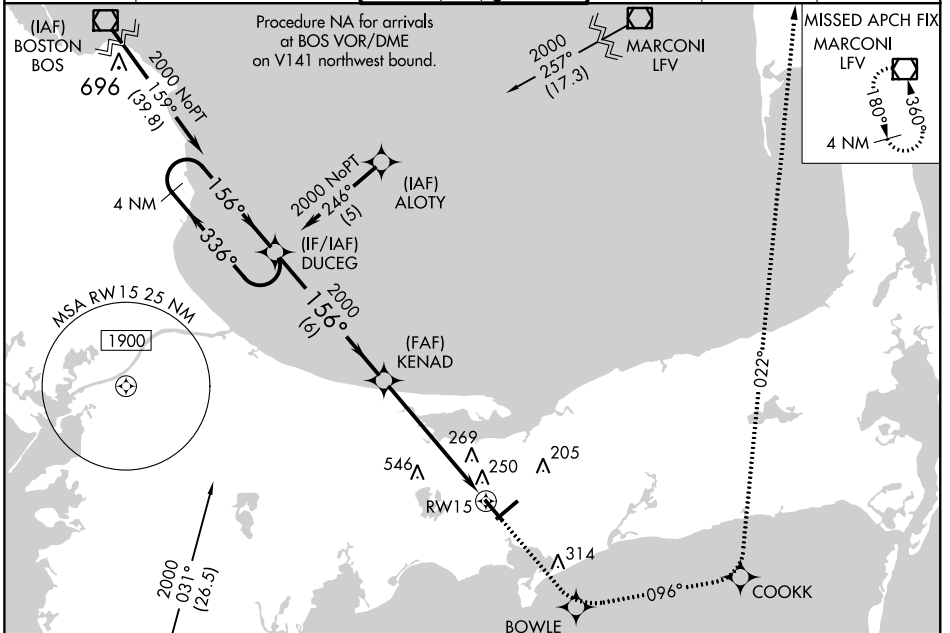
RNP APCH.

For uncompensated Baro-VNAV systems, LNAV/VNAV NA below -15°C (5°F) or above 39°C (102°F). When local altimeter setting not received, use Chatham altimeter setting: increase LPV DA to 286 feet; increase LNAV/VNAV DA to 601 feet; increase all MDAs 40 feet and visibility Cats C and D ¼ SM. For inop ALS, increase LNAV/VNAV all Cats visibility to 1 ½ SM. **RVR 1800 authorized with use of FD or AP or HUD to DA (NA when using Chatham local altimeter setting).

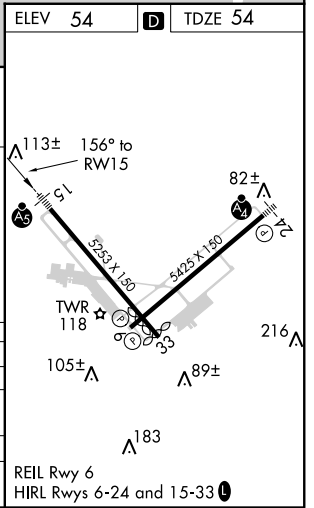
MALSR

MISSED APPROACH: Climb to 2000 direct BOWLE and on 096° track to COOKK and on 022° track to LFV VOR/DME and hold.

ATIS 123.8	BOSTON APP CON ★ 118.2 284.6	HYANNIS TOWER ★ 119.5 (CTAF) 0 257.8	GND CON 118.45	CLNC DEL 125.15	UNICOM 122.95
----------------------	--	--	--------------------------	---------------------------	-------------------------



4 NM Holding Pattern	2000	BOWLE	tr 096°	COOKK	tr 022°	LFV
	DUCEG	KENAD	*LNAV only.			
2000	← 336°	→ 156°	→ 156°	→ 156°	→ 156°	→ 156°
GP 3.10° TCH 55						
	← 6 NM	← 4.2 NM	← 1.5 NM			
CATEGORY	A	B	C	D		
LPV DA**		254/24	200 (200-½)			
LNAV/VNAV DA		569/60	515 (600-1¼)			
LNAV MDA	600/24	546 (600-½)	600/60	546 (600-1¼)		
CIRCLING	600-1	546 (600-1)	860-2¼ 806 (900-2¼)	860-2½ 806 (900-2½)		



NE-1, 21 MAY 2020 to 18 JUN 2020

NE-1, 21 MAY 2020 to 18 JUN 2020