

LOC/DME I-HYA 109.15	APP CRS 246°	Rwy Idg TDZE Apt Elev	5425 43 54
Chan 28 (Y)			

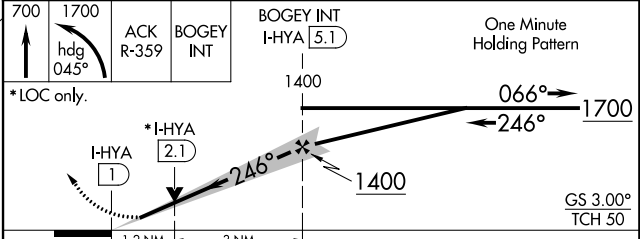
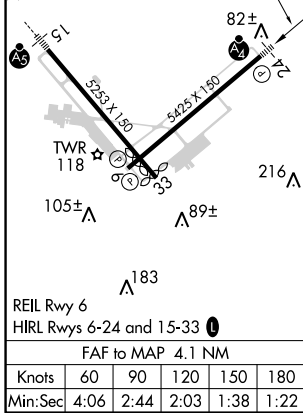
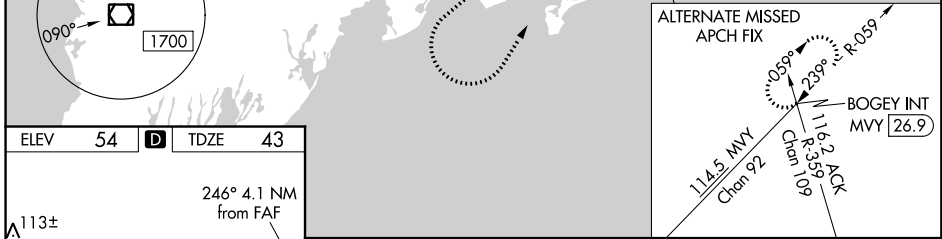
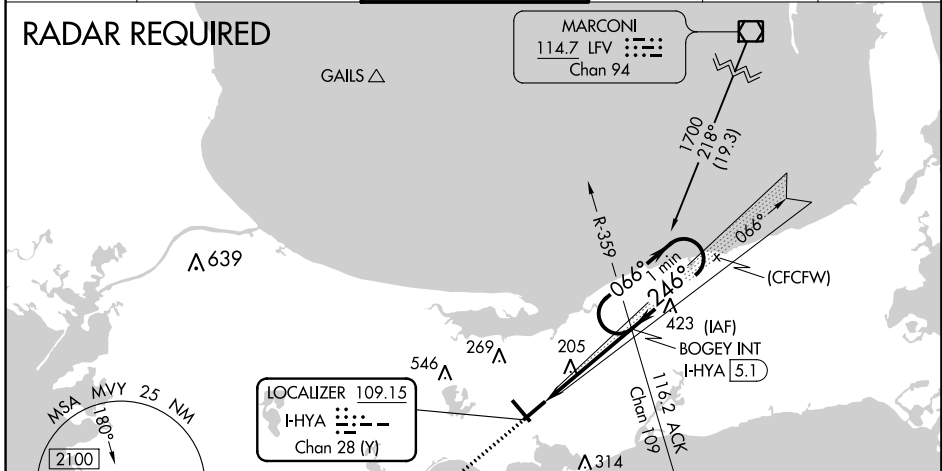
ILS or LOC RWY 24

BARNSTABLE MUNI-BOARDMAN/POLANDO FIELD (HYA)

When local altimeter setting not received, use Chatham altimeter setting and increase DA to 325 feet and all MDA 40 feet, increase S-LOC Cat C/D visibility to RVR 5500 and increase Circling Cat C/D visibility ¼ mile. Inop table does not apply to S-ILS 24 all Cats. For inop MALSF, increase S-LOC 24 Cat C/D visibility to RVR 6000, for inop MALSF when using Chatham altimeter setting, increase S-ILS 24 all Cats visibility to RVR 4500 and S-LOC 24 Cat C/D visibility to 1 ½ mile.

MALSF
MISSED APPROACH: Climb to 700 then climbing left turn to 1700 on heading 045° and on ACK VOR/DME R-359° to BOGEY INT I-HYA 5.1 DME and hold.

ATIS 123.8	BOSTON APP CON* 118.2 284.6	HYANNIS TOWER* 119.5 (CTAF) 0 257.8	GND CON 118.45	CLNC DEL 125.15	UNICOM 122.95
----------------------	---------------------------------------	---	--------------------------	---------------------------	-------------------------



CATEGORY	A	B	C	D
S-ILS 24	293/40		250 (300-¾)	
S-LOC 24	460/40	417 (500-¾)	460/50	417 (500-1)
CIRCLING	560-1 506 (600-1)	580-1 526 (600-1)	860-2¼ 806 (900-2¼)	860-2½ 806 (900-2½)

ILS or LOC RWY 24

NE-1, 21 MAY 2020 to 18 JUN 2020

NE-1, 21 MAY 2020 to 18 JUN 2020