

LOC/DME I-BCU 108.95 Chan 26 (Y)	APP CRS 156°	Rwy Idg 5253 TDZE 54 Apt Elev 54
---	------------------------	---

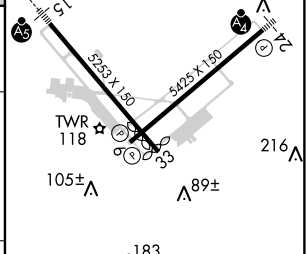
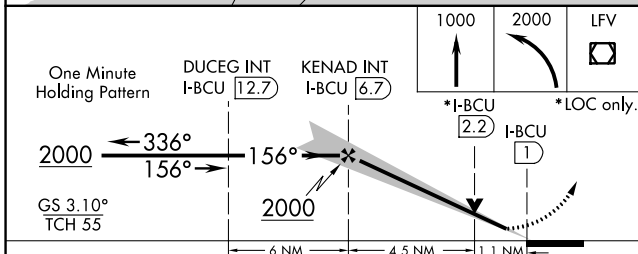
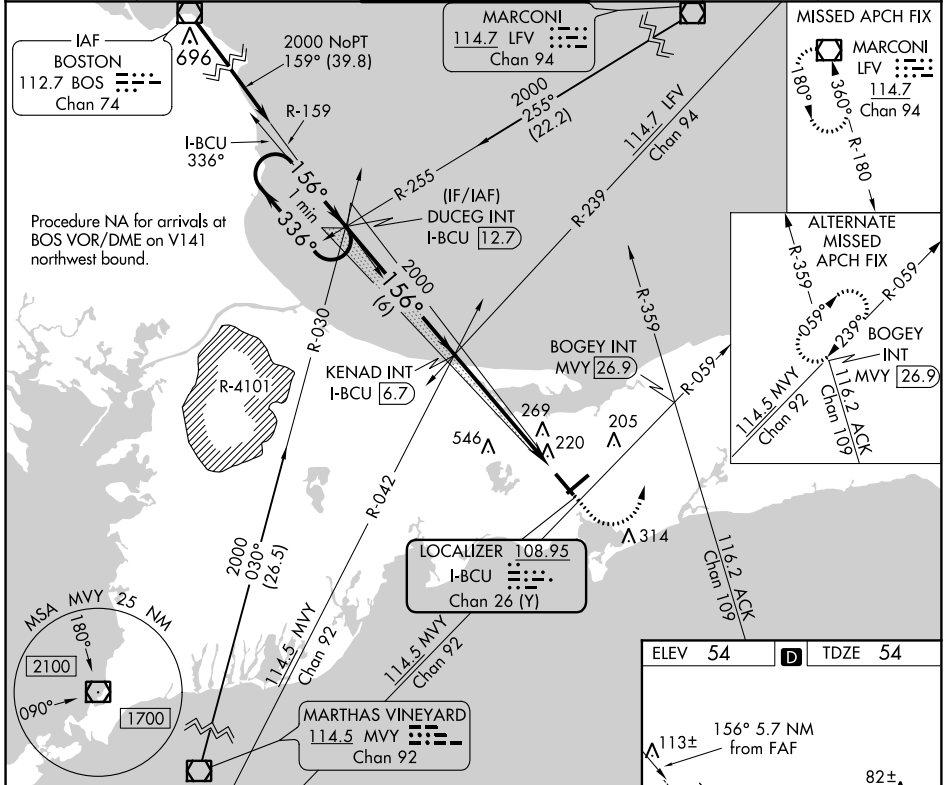
ILS or LOC RWY 15

BARNSTABLE MUNI-BOARDMAN/POLANDO FIELD (HYA)

⚠ VDP NA when using Chatham altimeter setting. When local altimeter setting not received, use Chatham altimeter setting and increase all DA to 286 feet and all MDA 40 feet, increase S-LOC 1.5 Cat C and D visibility to RVR 5000 and Circling Cat C and D visibility ¼ mile. For Inop MALSRS when using Chatham altimeter setting, increase S-LOC 1.5 Cat C and D visibility to 1½ mile. **RVR 1800 authorized with use of FD or AP or HUD to DA (NA when using Chatham altimeter setting).

MALSRS
AS
MISSED APPROACH: Climb to 1000 then climbing left turn to 2000 direct LFV VOR/DME and hold. When authorized by ATC, climb-in-hold to 3000.

ATIS 123.8	BOSTON APP CON * 118.2 284.6	HYANNIS TOWER * 119.5 (CTAF) 257.8	GND CON 118.45	CLNC DEL 125.15	UNICOM 122.95
----------------------	--	--	--------------------------	---------------------------	-------------------------



CATEGORY	A	B	C	D
S-ILS 15	**254/24 200 (200-½)			
S-LOC 15	480/24	426 (500-½)	480/40	426 (500-¾)
CIRCLING	560-1 506 (600-1)	580-1 526 (600-1)	860-2¼ 806 (900-2¼)	860-2½ 806 (900-2½)

REIL Rwy 6	HIRL Rlys 6-24 and 15-33				
FAF to MAP 5.7 NM					
Knots	60	90	120	150	180
Min:Sec	5:42	3:48	2:51	2:17	1:54

NE-1, 21 MAY 2020 to 18 JUN 2020

NE-1, 21 MAY 2020 to 18 JUN 2020