

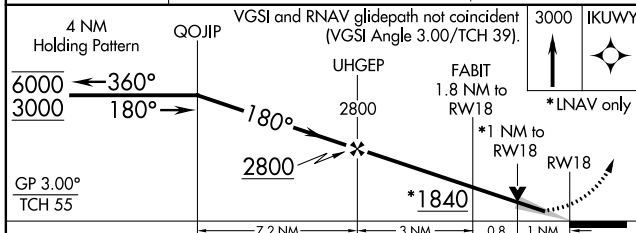
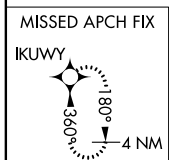
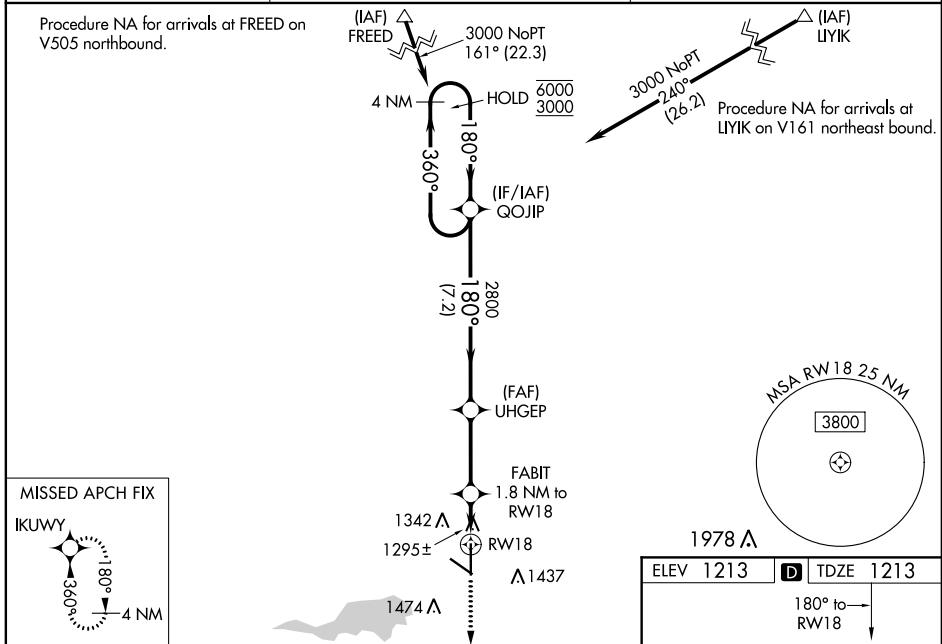
WAAS CH 40100 W18A	APP CRS 180°	Rwy Idg TDZE Apt Elev	6501 1213 1213
--	------------------------	-----------------------------	---

RNAV (GPS) RWY 18

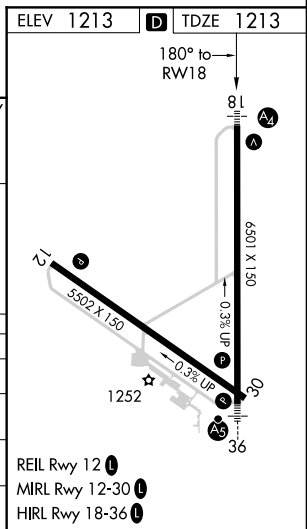
MASON CITY MUNI (MCW)

RNP APCH.	MALS 	MISSED APPROACH: Climb to 3000 direct IKUWY and hold.
▽ Baro-VNAV and VDP NA when using Charles City altimeter setting. For uncompensated Baro-VNAV systems, LNAV/VNAV NA below -17°C or above 54°C. Inop table does not apply to LPV and LNAV/VNAV. When local altimeter setting not received, use Charles City altimeter setting and increase all DA 87 feet; increase all MDA 100 feet and LNAV Cats C/D and Circling Cat C visibility ¼ SM. For inop MALS when using Charles City altimeter setting, increase LPV and LNAV/VNAV all Cats visibility ½ SM; LNAV Cats C/D visibility to 1½ SM.		

ASOS 120.3	MINNEAPOLIS CENTER 127.3 380.2	UNICOM 123.0 (CTAF) 0
----------------------	--	---------------------------------



CATEGORY	A	B	C	D
LPV DA		1413-¾	200 (200-¾)	
LNAV/VNAV DA		1463-¾	250 (300-¾)	
LNAV MDA		1560-¾	347 (400-¾)	
CIRCLING	1660-1 447 (500-1)	1680-1 467 (500-1)	1760-1½ 547 (600-1½)	1780-2 567 (600-2)



NC-3, 21 MAY 2020 to 18 JUN 2020

NC-3, 21 MAY 2020 to 18 JUN 2020