
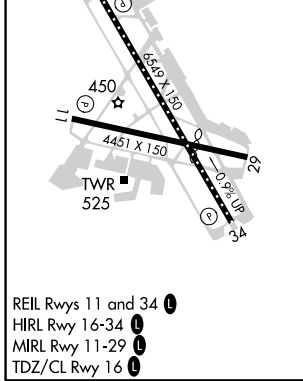
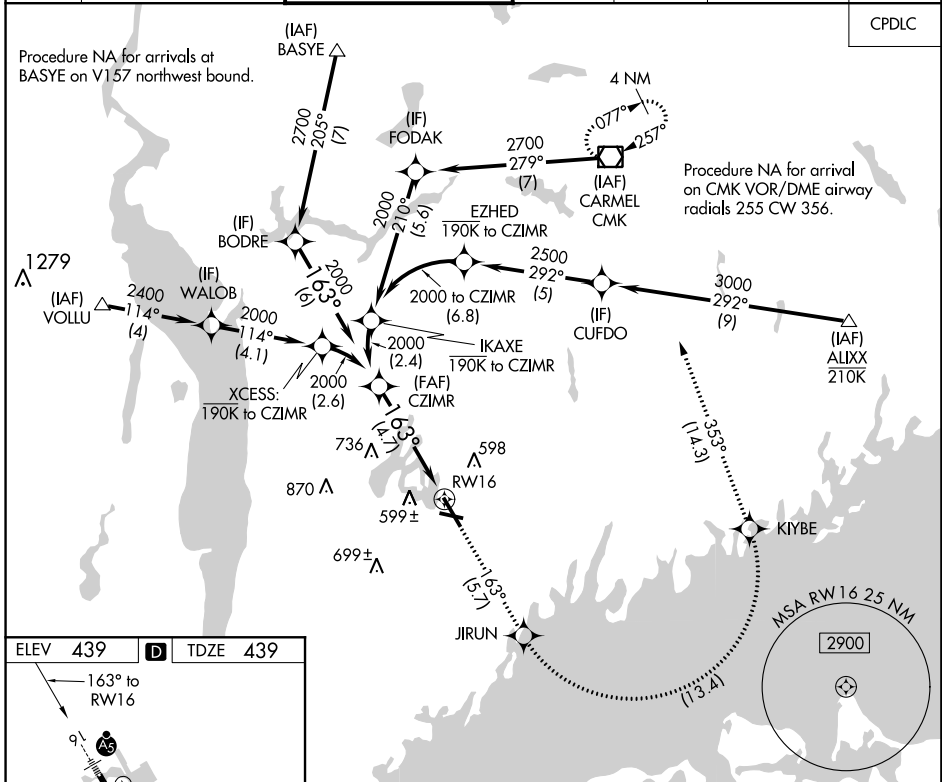


APP CRS	Rwy Idg	6549
163°	TDZE	439
	Apt Elev	439

RNAV (RNP) Z RWY 16

WESTCHESTER COUNTY (HPN)

<p>▽ For uncompensated Baro-VNAV systems, procedure NA below -14C (7°F) or above 54°C (130°F). RF required. GPS required.</p>		<p>MALSR</p> 	<p>MISSED APPROACH: Climb to 3000 on track 163° to JIRUN, left turn to KIYBE, then track 353° to CMK VOR/DME and hold.</p>			
D-ATIS	NEW YORK APP CON	WESTCHESTER TOWER ★	GND CON	CLNC DEL	CLNC DEL	UNICOM
133.8	120.8 126.4 257.65	118.575 (CTAF) 0 284.65	121.825	127.25	126.4 (when twr closed)	122.95



See planview for multiple IF locations.

3000	↑	tr 163°	JIRUN	↙	KIYBE	↘	tr 353°	CMK
------	---	---------	-------	---	-------	---	---------	-----

GP 3.00°
TCH 55

4.7 NM

CATEGORY	A	B	C	D
RNP 0.15 DA		810/40	371 (400-¾)	
RNP 0.30 DA		950-1¼	511 (600-1¼)	

AUTHORIZATION REQUIRED

NE-2, 21 MAY 2020 to 18 JUN 2020

NE-2, 21 MAY 2020 to 18 JUN 2020

CPDLC