

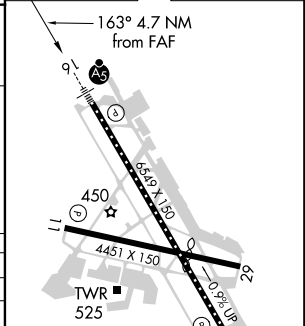
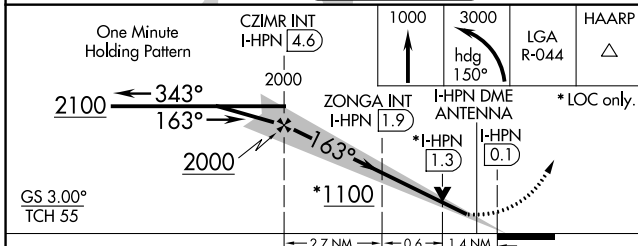
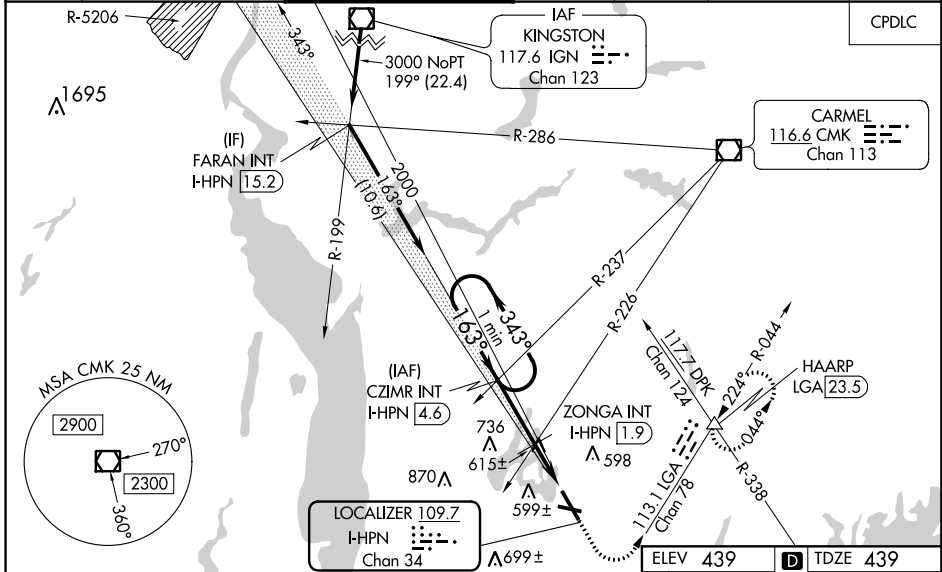
LOC/DME I-HPN 109.7 Chan 34	APP CRS 163°	Rwy Idg 6549 TDZE 439 Apt Elev 439
---	------------------------	---

ILS or LOC RWY 16

WESTCHESTER COUNTY (HPN)

<p>▼ ▲</p> <p>Circling Rwy 11, 29 NA at night. For inop ALS, increase S-LOC 16 Cats C/D visibility to 1½ SM and ZONGA FIX minimums S-LOC 16 Cats C/D visibility to 1¾ SM.</p>	<p>MALSRL</p>	<p>MISSED APPROACH: Climb to 1000 then climbing left turn to 3000 on heading 150° and LGA VOR/DME R-044 to HAARP INT/LGA 23.5 DME and hold, continue climb-in-hold to 3000.</p>
---	---------------	---

D-ATIS 133.8	NEW YORK APP CON 120.8 126.4 257.65	WESTCHESTER TOWER ★ 118.575 (CTAF) 0 284.65	GND CON 121.825	CLNC DEL 127.25	CLNC DEL 126.4 (when twr closed)	UNICOM 122.95
------------------------	---	--	---------------------------	---------------------------	---	-------------------------



CATEGORY	A	B	C	D
S-ILS 16	639/18		200 (200-½)	
S-LOC 16	1100/24	661 (700-½)	1100-1½	661 (700-½)
C CIRCLING	1100-1	661 (700-1)	1100-1⅞ 661 (700-1⅞)	1200-2½ 761 (800-2½)
ZONGA FIX MINIMUMS (DUAL VOR RECEIVERS OR DME REQUIRED)				
S-LOC 16	940/24	501 (600-½)	940/55	501 (600-1)
C CIRCLING	980-1	541 (600-1)	1080-1¾ 641 (700-¾)	1200-2½ 761 (800-2½)

REIL Rwy 11 and 34 **Ⓛ**
HRL Rwy 16-34 **Ⓛ**
MIRL Rwy 11-29 **Ⓛ**
TDZ/CL Rwy 16 **Ⓛ**

FAF to MAP 4.7 NM

Knots	60	90	120	150	180
Min:Sec	4:42	3:08	2:21	1:53	1:34

NE-2, 21 MAY 2020 to 18 JUN 2020

NE-2, 21 MAY 2020 to 18 JUN 2020