

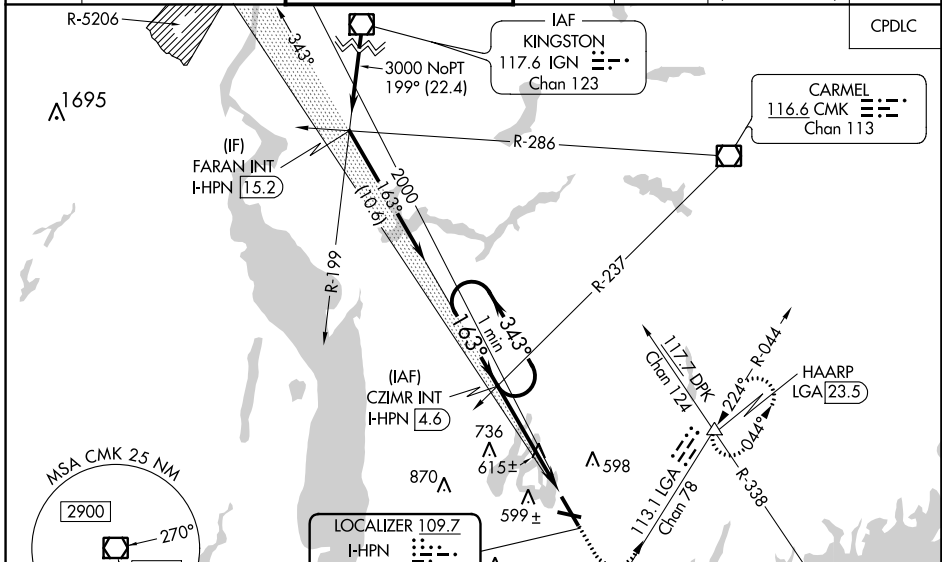
LOC/DME I-HPN 109.7 Chan 34	APP CRS 163°	Rwy Idg 6549 TDZE 439 Apt Elev 439
--	------------------------	---

ILS RWY 16 (SA CAT I & II)

WESTCHESTER COUNTY (HPN)

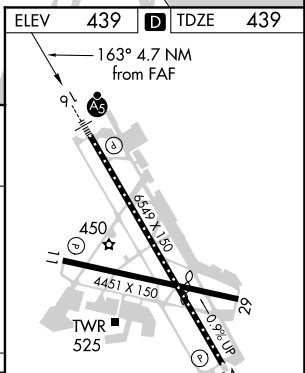
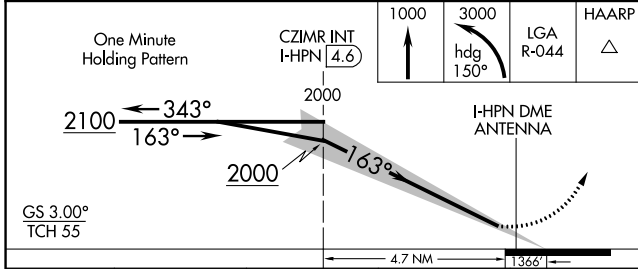
<p>▽ ▲</p> <p>SA CAT I: Requires specific OPSPEC, MSPEC, or LOA approval and use of HUD to DH. SA CAT II: Reduced lighting; Requires specific OPSPEC, MSPEC, or LOA approval and use of autoland or HUD to touchdown. Procedure NA when tower closed.</p>	<p>MALSRL</p>	<p>MISSED APPROACH: Climb to 1000 then climbing left turn to 3000 on heading 150° and LGA VOR/DME R-044 to HAARP INT/ LGA 23.5 DME and hold, continue climb-in-hold to 3000.</p>
---	---------------	--

D-ATIS 133.8	NEW YORK APP CON 120.8 126.4 257.65	WESTCHESTER TOWER ★ 118.575 (CTAF) 0 284.65	GND CON 121.825	CLNC DEL 127.25	CLNC DEL 126.4 (when twr closed)	UNICOM 122.95
------------------------	---	--	---------------------------	---------------------------	---	-------------------------



ELEV 439	TDZE 439
----------	----------

163° 4.7 NM from FAF



CATEGORY	A	B	C	D
S-ILS 16		SA CAT I RA 198/14	150 DA 589	
S-ILS 16		SA CAT II RA 113/12	100 DA 539	

SA CATEGORY I & II SPECIAL AIRCREW & AIRCRAFT CERTIFICATION REQUIRED

- REIL Rwy 11 and 34
- HIRL Rwy 16-34
- MIRL Rwy 11-29
- TDZ/CL Rwy 16

NE-2, 21 MAY 2020 to 18 JUN 2020

NE-2, 21 MAY 2020 to 18 JUN 2020