

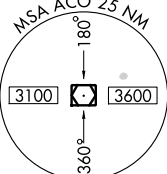
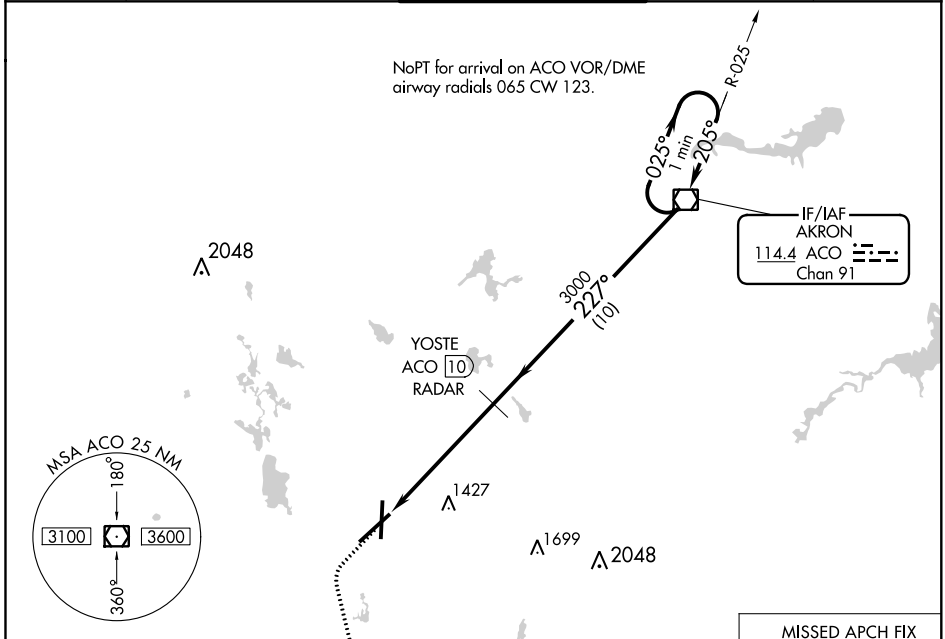
VOR/DME ACO 114.4 Chan 91	APP CRS 227°	Rwy Idg TDZE 1226 Apt Elev 1228
---	------------------------	---

VOR RWY 23

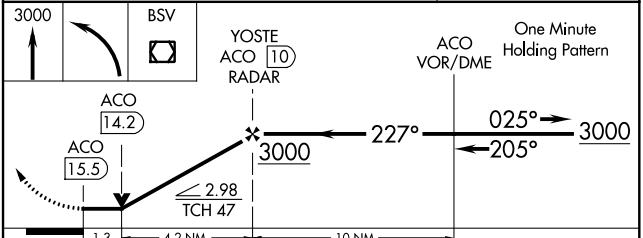
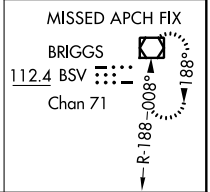
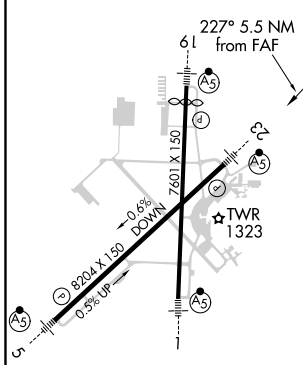
AKRON-CANTON RGNL (CAK)

DME or RADAR required.		MALSR	MISSED APPROACH: Climb to 3000 then left turn direct BSV VOR/DME and hold.	
------------------------	--	-------	--	--

ATIS 121.05	CLEVELAND APP CON * 125.5 269.25	AKRON-CANTON TOWER 134.75 279.575	GND CON 121.7 348.6	CLNC DEL 132.05
-----------------------	--	---	-------------------------------	---------------------------



ELEV 1228	D	TDZE 1226
-----------	----------	-----------



HIRL Rws 1-19 and 5-23	FAF to MAP 5.5 NM				
Knots	60	90	120	150	180
Min:Sec	5:30	3:40	2:45	2:12	1:50
CATEGORY	A	B	C	D	
S-23	1680/24	454 (500-½)	1680/40 454 (500-¾)	1680/50	454 (500-1)
CIRCLING	1760-1	532 (600-1)	1760-1½ 532 (600-1½)	1780-2	552 (600-2)

EC-2, 21 MAY 2020 to 18 JUN 2020

EC-2, 21 MAY 2020 to 18 JUN 2020