

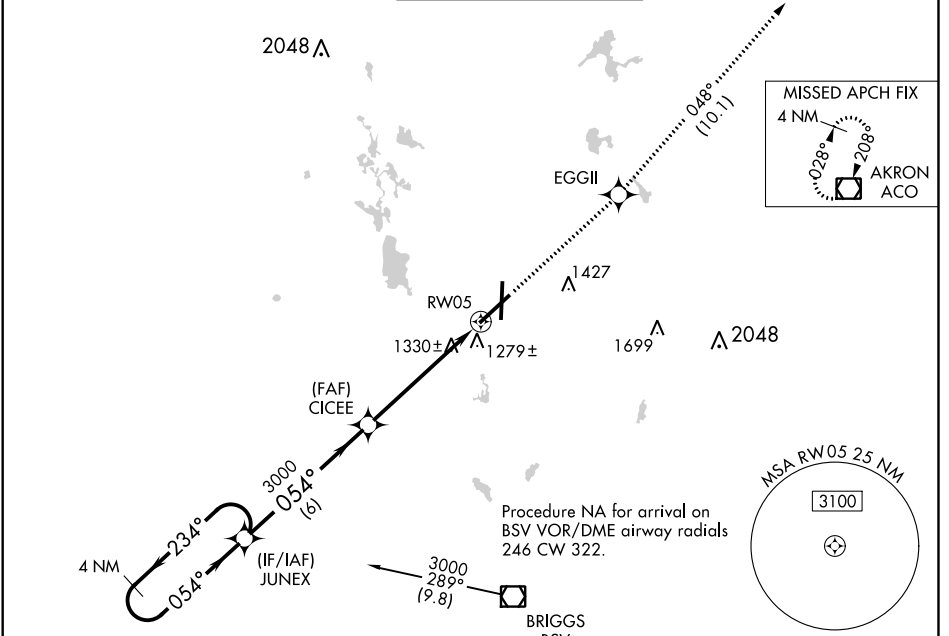
WAAS CH 77620 W05A	APP CRS 054°	Rwy Idg TDZE Apt Elev	8204 1199 1228
--	------------------------	-----------------------------	---

RNAV (GPS) RWY 5

AKRON-CANTON RGNL (CAK)

	For uncompensated Baro-VNAV systems, LNAV/VNAV NA below -17°C (2°F) or above 46°C (114°F). DME/DME RNP-0.3 NA. ** RVR 1800 authorized with use of FD or AP or HUD to DA.		MISSED APPROACH: Climb to 3000 direct EGGII and on track 048° to ACO VOR/DME and hold.

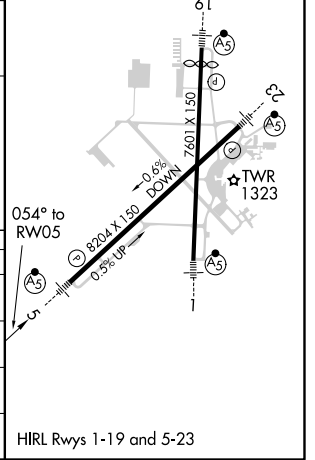
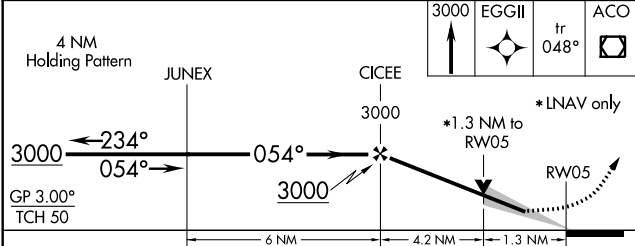
ATIS 121.05	CLEVELAND APP CON * 125.5 269.25	AKRON-CANTON TOWER 134.75 279.575	GND CON 121.7 348.6	CLNC DEL 132.05
-----------------------	--	---	-------------------------------	---------------------------



EC-2, 21 MAY 2020 to 18 JUN 2020

EC-2, 21 MAY 2020 to 18 JUN 2020

ELEV 1228		TDZE 1199
-----------	--	-----------



CATEGORY	A	B	C	D
LPV DA	**1399/24		200 (200-½)	
LNAV/VNAV DA	1577/50		378 (400-1)	
LNAV MDA	1640/24	441 (500-½)	1640/40 441 (500-¾)	1640/50 441 (500-1)
CIRCLING	1760-1	532 (600-1)	1760-1½ 532 (600-1½)	1780-2 552 (600-2)

HIRL Rwy's 1-19 and 5-23