

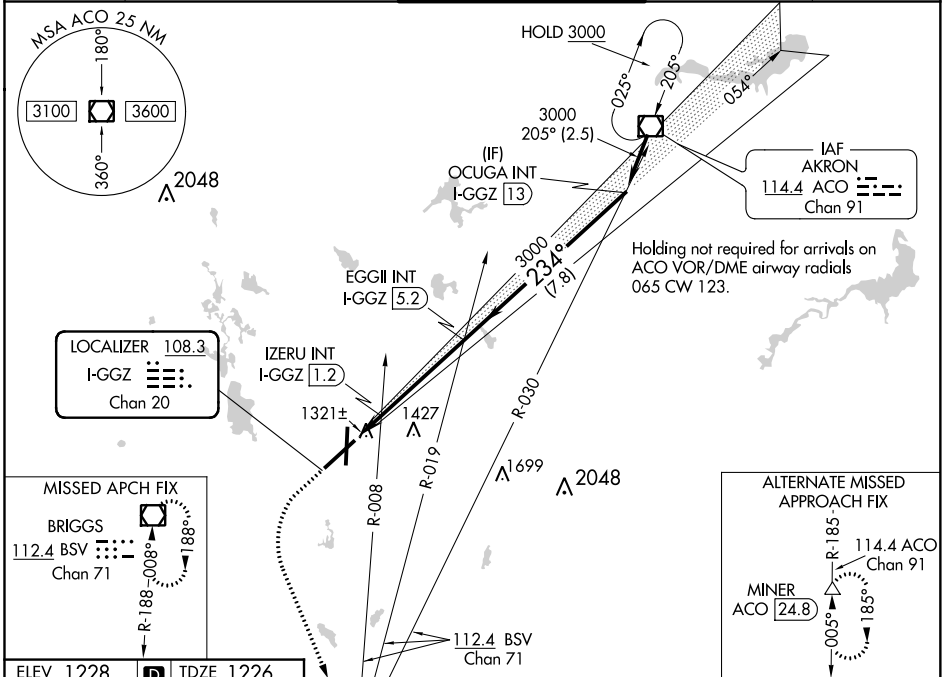
LOC/DME I-GGZ <b>108.3</b> Chan 20	APP CRS <b>234°</b>	Rwy Idg TDZE Apt Elev	<b>8204</b> <b>1226</b> <b>1228</b>
--	------------------------	-----------------------------	---

# ILS or LOC RWY 23

AKRON-CANTON RGNL (CAK)

<b>V</b> **RVR 1800 authorized with use of FD or AP or HUD to DA.	MALSR 	MISSED APPROACH: Climb to 2500 then climbing left turn to 3000 direct BSV VOR/DME and hold.
---	-----------	---

ATIS <b>121.05</b>	CLEVELAND APP CON * <b>125.5 269.25</b>	AKRON-CANTON TOWER <b>134.75 279.575</b>	GND CON <b>121.7 348.6</b>	CLNC DEL <b>132.05</b>
-----------------------	--	---	-------------------------------	---------------------------

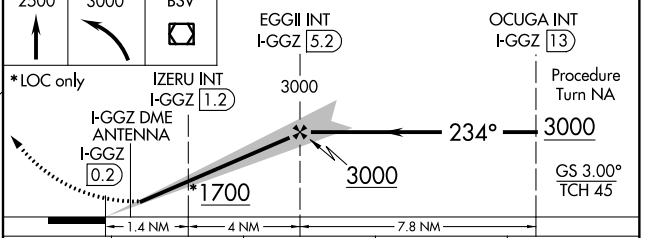
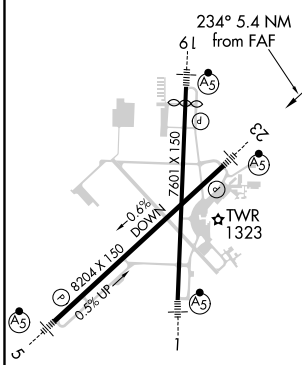


**LOCALIZER 108.3**  
I-GGZ  
Chan 20

**MISSED APCH FIX**  
BRIGGS  
112.4 BSV  
Chan 71

**ALTERNATE MISSED APPROACH FIX**  
MINER ACO [24.8]  
114.4 ACO  
Chan 91

ELEV 1228	<b>D</b>	TDZE 1226
-----------	----------	-----------



CATEGORY	A	B	C	D
S-ILS 23	**1426/24 200 (200-1/2)			
S-LOC 23	1700/24	474 (500-1/2)	1700/50 474 (500-1)	
CIRCLING	1760-1	532 (600-1)	1760-1 1/2 532 (600-1 1/2)	1780-2 552 (600-2)
IZERU FIX MINIMUMS				
S-LOC 23	1580/24 354 (400-1/2)		1580/40 354 (400-3/4)	
CIRCLING	1760-1	532 (600-1)	1760-1 1/2 532 (600-1 1/2)	1780-2 552 (600-2)

HIRL Rws 1-19 and 5-23

FAF to MAP 5.4 NM

Knots	60	90	120	150	180
Min:Sec	5:24	3:36	2:42	2:10	1:48

EC-2, 21 MAY 2020 to 18 JUN 2020

EC-2, 21 MAY 2020 to 18 JUN 2020