

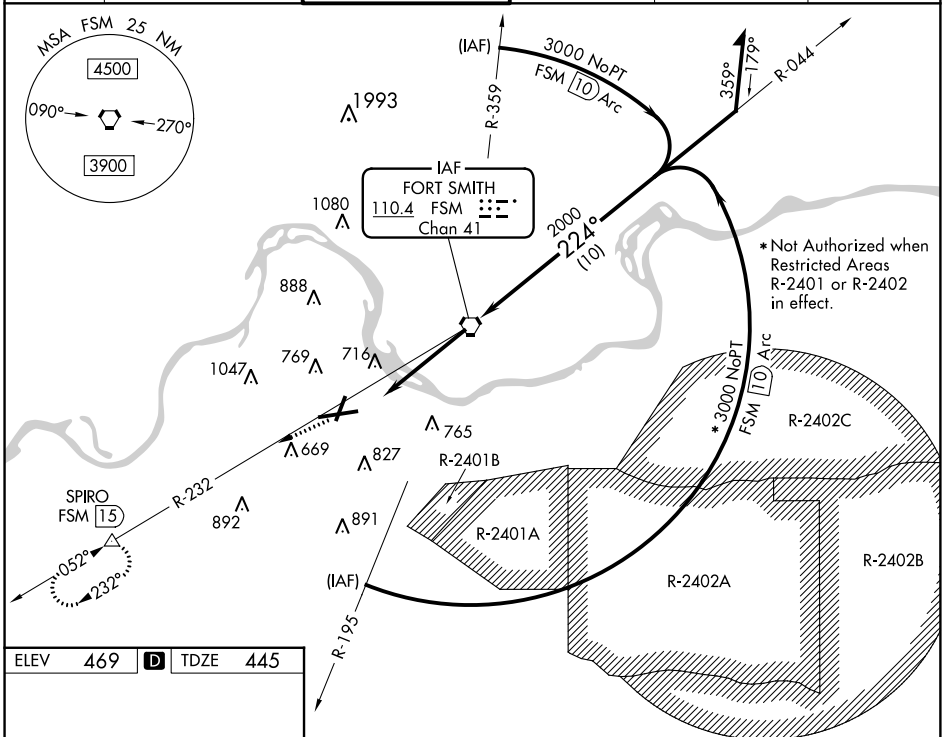
VORTAC FSM <b>110.4</b> Chan 41	APP CRS <b>224°</b>	Rwy Idg TDZE <b>445</b> Apt Elev <b>469</b>
---------------------------------------	------------------------	---

# VOR or TACAN RWY 25

FORT SMITH RGNL (FSM)

<b>ASR</b> Inoperative table does not apply. Circling NA northwest of Rwy 7 and 19 for Cat E. Circling Cat E NA when R-2401B active.	<b>MALSR</b> 	<b>MISSED APPROACH:</b> Climb to 4000 via FSM R-232 to SPIRO Int/15 DME and hold.
--	------------------	---

<b>ATIS</b> <b>126.3</b>	<b>RAZORBACK APP CON*</b> <b>120.9 343.75</b>	<b>FORT SMITH TOWER*</b> <b>118.3 (CTAF) 323.175</b>	<b>GND CON</b> <b>121.9 275.8</b>	<b>CLNC DEL</b> <b>133.85 278.3</b>	<b>UNICOM</b> <b>122.95</b>
-----------------------------	--	---	--------------------------------------	--	--------------------------------

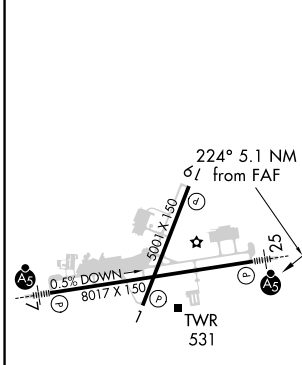


\*Not Authorized when Restricted Areas R-2401 or R-2402 in effect.

SC-1, 21 MAY 2020 to 18 JUN 2020

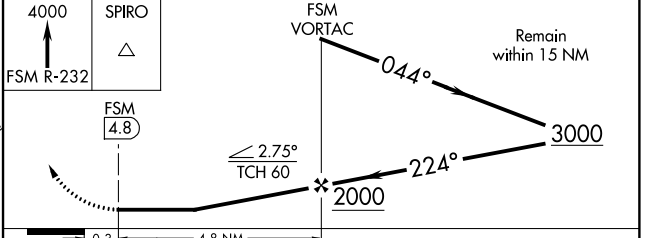
SC-1, 21 MAY 2020 to 18 JUN 2020

ELEV 469	<b>D</b>	TDZE 445
----------	----------	----------



HIRL Rwy 7-25	MIRL Rwy 1-19				
FAF to MAP 4.8 NM					
Knots	60	90	120	150	180
Min:Sec	4:48	3:12	2:24	1:55	1:36

## DME REQUIRED



CATEGORY	A	B	C	D	E
S-25	980-1	535 (600-1)	980-1½ 535 (600-1½)	980-1¾ 535 (600-1¾)	980-2 535 (600-2)
CIRCLING	1140-1	671 (700-1)	1140-2 671 (700-2)	1140-2¼ 671 (700-2¼)	1200-2½ 731 (800-2½)