

LOC I-FSM 111.3	APP CRS 256°	Rwy Idg TDZE Apt Elev	8017 453 469
---------------------------	------------------------	-----------------------------	---

ILS or LOC RWY 25

FORT SMITH RGNL (FSM)

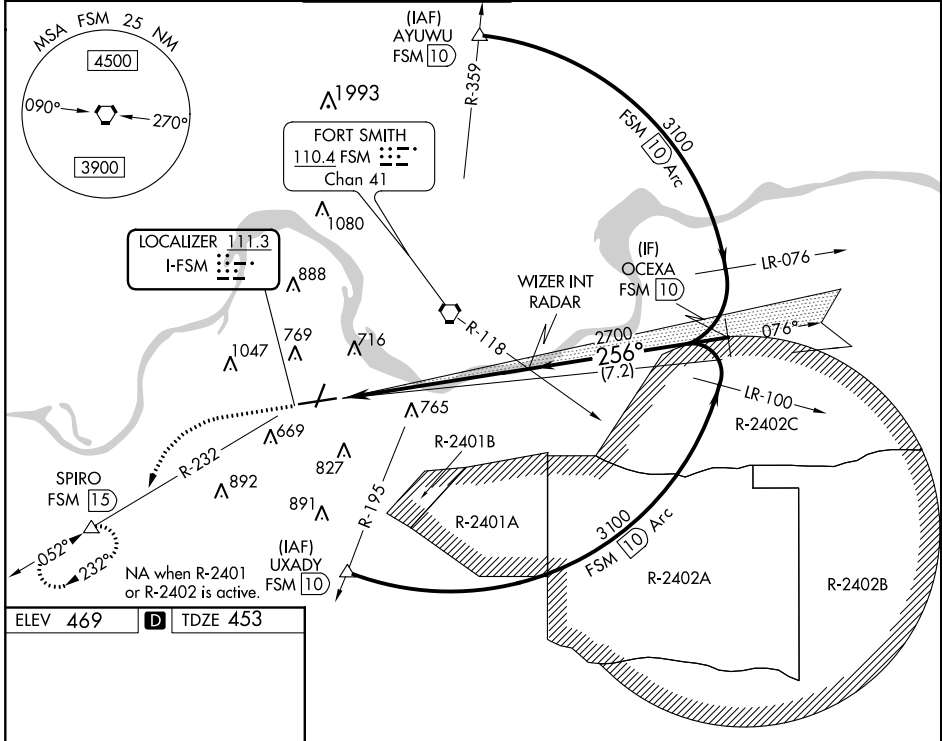
DME required.

⚠ Circling NA for Cat E when R-2401B active. Circling NA for Cat E NW of Rwys 7 and 19. For inop ALS, increase S-ILS 25 Cat E visibility to RVR 4000 and S-LOC 25 Cat C/D/E to 1½ SM.
* RVR 1800 authorized with the use of FD or AP or HUD to DA.

MALSR

MISSED APPROACH: Climb to 1400 then climbing left turn to 4000 on heading 220° and FSM VORTAC R-232 to SPIRO/FSM 15 DME and hold, continue climb-in-hold to 4000.

ATIS 126.3	RAZORBACK APP CON* 120.9 343.75	FORT SMITH TOWER* 118.3 (CTAF) 323.175	GND CON 121.9 275.8	CLNC DEL 133.85 278.3	UNICOM 122.95
----------------------	---	---	-------------------------------	---------------------------------	-------------------------



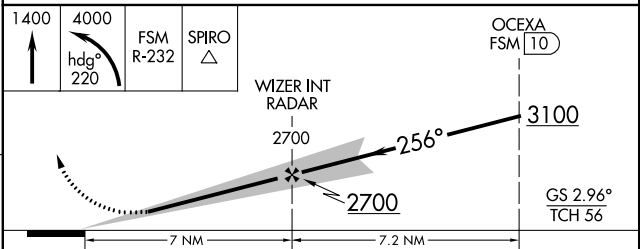
ELEV 469 **D** TDZE 453

Diagram showing the 256° heading, 7 NM from FAF, and various altitudes (1400, 4000, 2700, 3100). Includes WIZER INT RADAR and OCEXA FSM 10. GS 2.96° TCH 56.

HIRL Rwy 7-25 **0**
MIRL Rwy 1-19 **0**

FAF to MAP 7 NM

Knots	60	90	120	150	180
Min:Sec	7:00	4:40	3:30	2:48	2:20



CATEGORY	A	B	C	D	E
S-ILS 25*	653/24 200 (200-½)				
S-LOC 25	1020/24 567 (600-½)		1020-1¼ 567 (600-1¼)		
C CIRCLING	1140-1 671 (700-1)		1400-2¾ 931(1000-2¾)		1400-3 931 (1000-3)

SC-1, 21 MAY 2020 to 18 JUN 2020

SC-1, 21 MAY 2020 to 18 JUN 2020