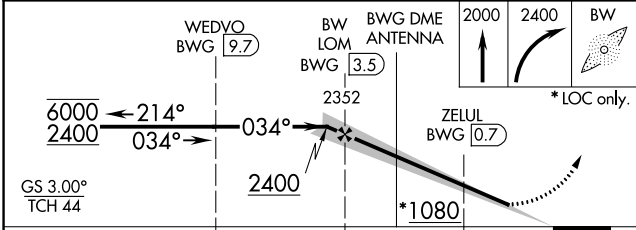
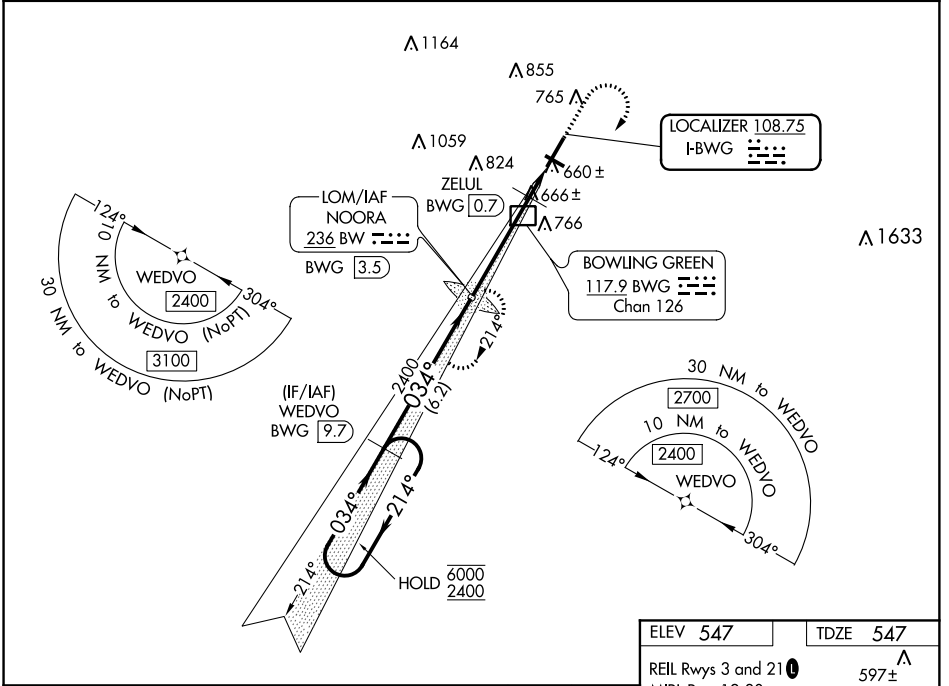


LOC I-BWG	APP CRS	Rwy Idg	6501
108.75	034°	TDZE	547
		Apt Elev	547

ILS Z or LOC Z RWY 3

BOWLING GREEN-WARREN COUNTY RGNL (BWG)

RNAV 1-GPS required.		MISSED APPROACH: Climb to 2000 then climbing right turn to 2400 direct NOORA LOM and hold.	
ASOS	MEMPHIS CENTER	UNICOM	
127.825	133.85 317.6	123.0 (CTAF) 0	



ELEV 547	TDZE 547
REIL Rwy 3 and 21	597±
MIRL Rwy 12-30	
HIRL Rwy 3-21	

6000	2400	2352	2000	2400	BWG
← 21.4°	→ 03.4°		↑	↘	↻
6.2 NM		4.2 NM		1.3 NM	
*LOC only.					

582±	597	603±	616±	610±
↖	☆	↗	↖	↖
3956 X 150				
034° 5.5 NM from FAF				
FAF to MAP 5.5 NM				

Knots	60	90	120	150	180
Min:Sec	5:30	3:40	2:45	2:12	1:50

CATEGORY	A	B	C	D
S-ILS 3	747-3/4 200 (200-3/4)			
S-LOC 3	1080-1	533 (600-1)	1080-1 1/2	533 (600-1 1/2)
CIRCLING	1080-1	1120-1	1160-1 3/4	1200-2
	533 (600-1)	573 (600-1)	613 (700-1 3/4)	653 (700-2)
ZELUL FIX MINIMUMS **				
S-LOC 3	920-1	373 (400-1)		
CIRCLING	1000-1	1120-1	1160-1 3/4	1200-2
	453 (500-1)	573 (600-1)	613 (700-1 3/4)	653 (700-2)

SE-1, 21 MAY 2020 to 18 JUN 2020

SE-1, 21 MAY 2020 to 18 JUN 2020