

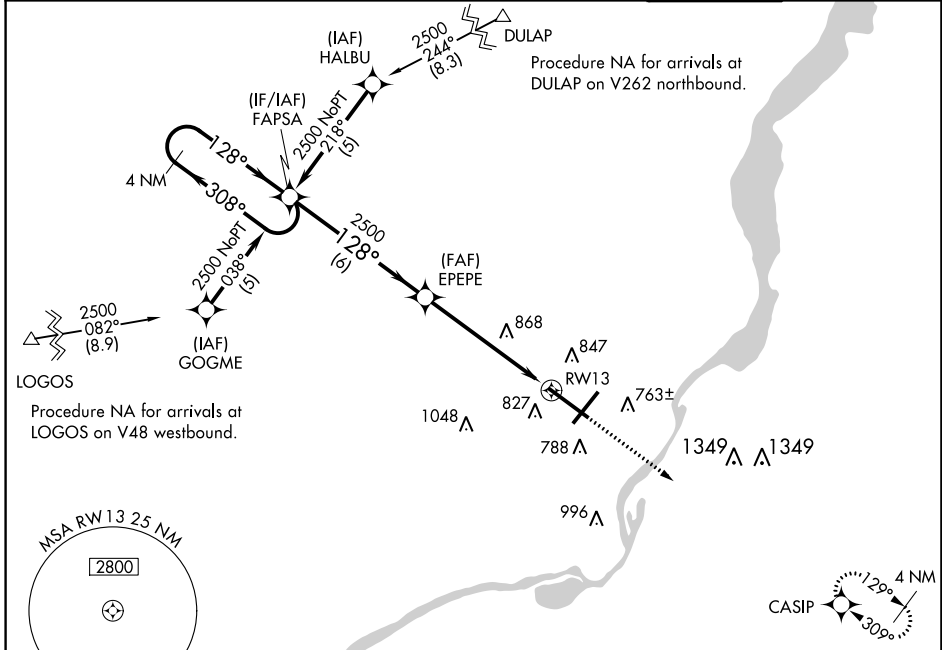
WAAS CH <b>60922</b> <b>W13A</b>	APP CRS <b>128°</b>	Rwy Idg TDZE Apt Elev	<b>9604</b> <b>636</b> <b>661</b>
--	------------------------	-----------------------------	---

# RNAV (GPS) RWY 13

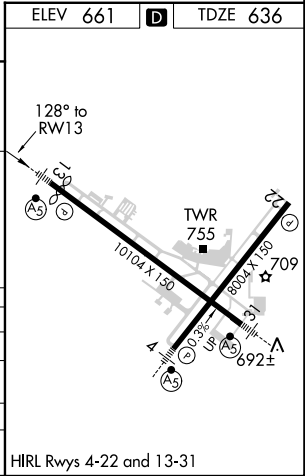
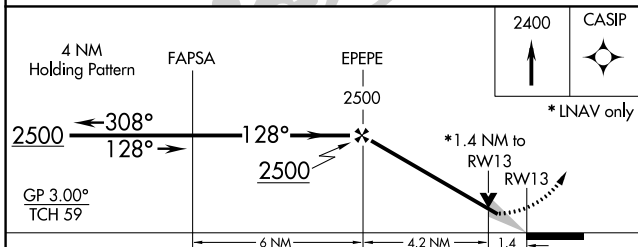
GENERAL DOWNING-PEORIA INTL (PIA)

RNP APCH.	<p>▼ For uncompensated Baro-VNAV systems, LNAV/VNAV NA below -18°C or above 54°C.</p> <p>▲ When local altimeter setting not received, use Logan County altimeter setting and increase all DA 89 feet and all MDA 100 feet, increase LPV DA all Cats visibility to 1½ mile, LNAV/VNAV DA all Cats visibility to 1¾ mile, LNAV MDA Cat C and D visibility to 1¼ mile, and Circling Cat C ¼ mile and Cat D ½ mile. Baro-VNAV and VDP NA when using Logan County altimeter setting. Circling Rwy 13, 31 NA at night.</p>	MALSRS	MISSED APPROACH: Climb to 2400 direct CASIP and hold.
-----------	--	--------	--

ATIS <b>126.1 282.2</b>	PEORIA APP CON <b>125.8 269.2</b> (305°-125°) <b>124.675 317.55</b> (126°-304°)	PEORIA TOWER <b>124.0 353.85</b>	GND CON <b>121.85 348.6</b>
----------------------------	--	-------------------------------------	--------------------------------



ELEV 661	<b>D</b>	TDZE 636
----------	----------	----------



CATEGORY	A	B	C	D
LPV DA		1025-¾	389 (400-¾)	
LNAV/VNAV DA		1083-1	447 (500-1)	
LNAV MDA	1120-½	484 (500-½)	1120-1	484 (500-1)
<b>C</b> CIRCLING	1160-1	499 (500-1)	1180-1½ 519 (600-1½)	1400-2¼ 739 (800-2¼)

EC-3, 21 MAY 2020 to 18 JUN 2020

EC-3, 21 MAY 2020 to 18 JUN 2020