

LOM PI 356	APP CRS 309°	Rwy Idg 10104 TDZE 650 Apt Elev 661
----------------------	------------------------	--

NDB RWY 31

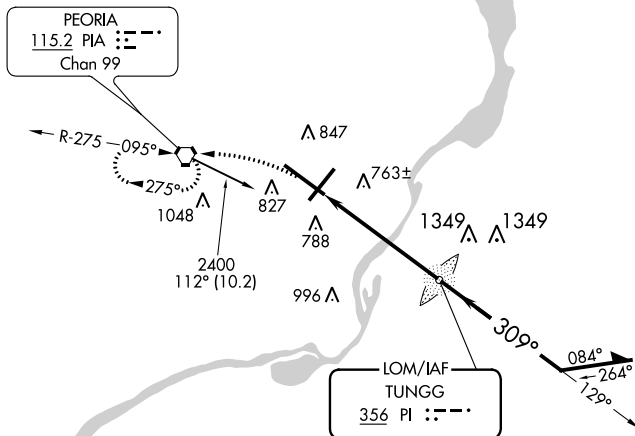
GENERAL DOWNING-PEORIA INTL (PIA)

▼ For inop ALS, increase S-31 Cat A/B visibility to RVR 5500, and Cat C/D to 1 3/8 SM. When local altimeter setting not received, use Logan County altimeter setting and increase all MDA 100 feet, increase S-31 Cat C and D visibility 1/4 mile, and Circling Cat C 1/4 mile and Cat D 1/2 mile. Circling Rwy 13, 31 NA at night.



MISSED APPROACH: Climbing left turn 2400 direct PIA VORTAC and hold.

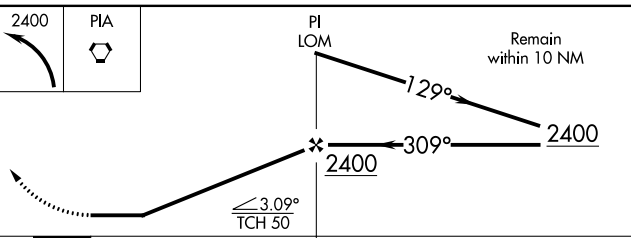
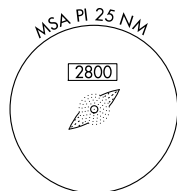
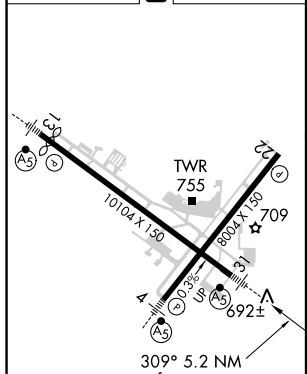
ATIS 126.1 282.2	PEORIA APP CON (305°-125°) 125.8 269.2 124.675 317.55 (126°-304°)	PEORIA TOWER 124.0 353.85	GND CON 121.85 348.6
----------------------------	---	-------------------------------------	--------------------------------



EC-3, 21 MAY 2020 to 18 JUN 2020

EC-3, 21 MAY 2020 to 18 JUN 2020

ELEV 661	D	TDZE 650
-----------------	----------	-----------------



	A	B	C	D
HIRL Rwy 4-22 and 13-31				
FAF to MAP 5.2 NM				
Knots Min:Sec	60 5:12	90 3:28	120 2:36	150 2:05 180 1:44
ⓐ CIRCLING	1160-1 499 (500-1)	490 (500-1/4)	1180-1 1/2 519 (600-1 1/2)	1400-2 1/4 739 (800-2 1/4)

NDB RWY 31