

PEORIA, ILLINOIS

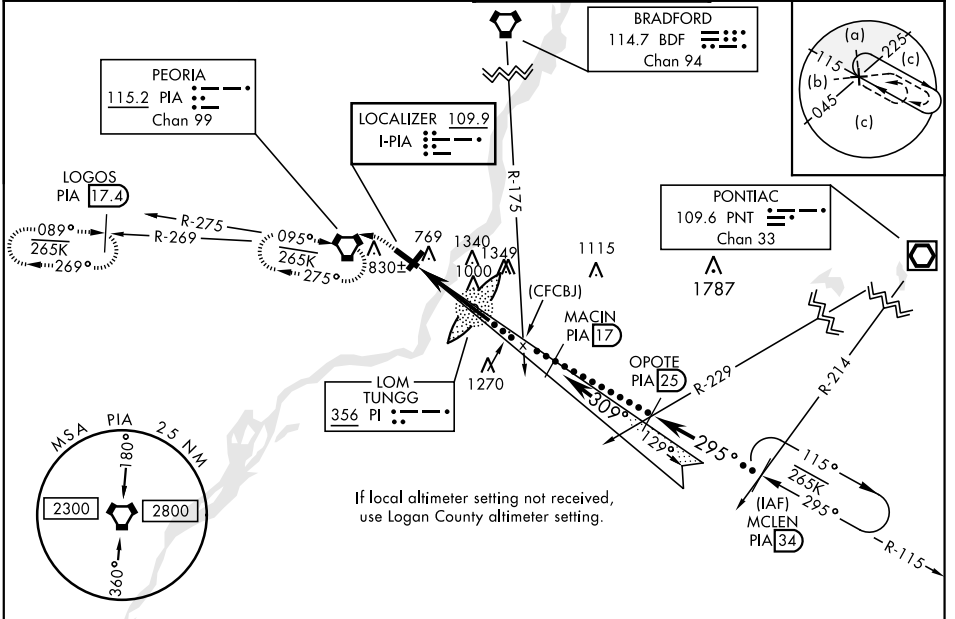
# HI-ILS or LOC RWY 31

LOC I-PIA <b>109.9</b>	APCH CRS <b>309°</b>	Rwy ldg <b>10,104</b> TDZE <b>650</b> Arprt Elev <b>661</b>	JAL 597 [USAF]	GENERAL DOWNING - PEORIA INTL (KPIA)
---------------------------	-------------------------	---	----------------	--------------------------------------

**▽** \* When ALS inop, increase vis ½ mile.  
 \*\* When ALS inop, increase vis ½ mile.

**MALS** MISSED APPROACH: Climb to 1200, then climbing left turn to 2400 direct PIA VORTAC and hold. (TACAN aircraft: continue via PIA R-269 to LOGOS 17.4 DME and hold west, right turn 089° inbound).

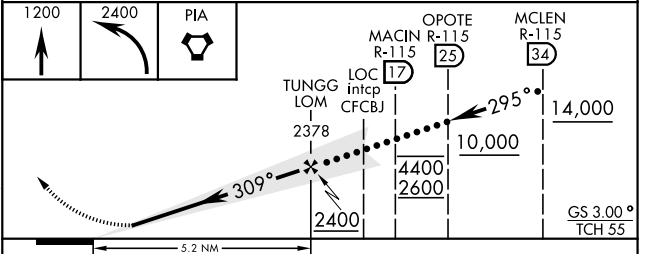
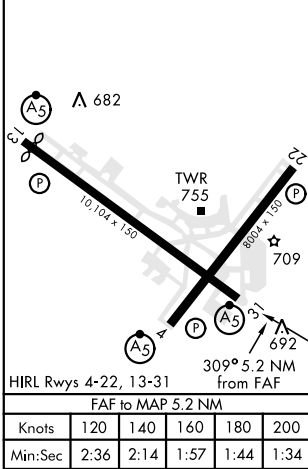
ATIS <b>126.1 282.2</b>	PEORIA APP CON <b>125.8 269.2</b> (305°-125°) <b>124.675 317.55</b> (126°-304°)	PEORIA TOWER <b>124.0 353.85</b>	GND CON <b>121.85 348.6</b>
----------------------------	---	-------------------------------------	--------------------------------



EMERG SAFE ALT 100 NM 3300

ELEV 661	TDZE 650
----------	----------

Rwy 13 ldg 9604'



	C	D	E
CATEGORY	C	D	E
S-ILS 31*	850/24	200	(200-½)
S-LOC 31**	1200/60	550	(600-1¼)
<b>C</b> CIRCLING	1200-1½ 539 (600-½)	1400-2¼ 739 (800-2¼)	1680-3 1019 (1100-3)
LOGAN COUNTY ALTIMETER MINIMA			
S-ILS 31*	939/24	289	(300-½)
S-LOC 31**	1300-1½	650	(700-1¾)
<b>C</b> CIRCLING	1300-1¾ 639 (700-1¾)	1500-2¾ 839 (900-2¾)	1780-3 1119 (1200-3)

PEORIA, ILLINOIS 40°40'N-89°42'W GENERAL DOWNING - PEORIA INTL (KPIA)

Amdt 7C 26MAR20

# HI-ILS or LOC RWY 31

EC-3, 21 MAY 2020 to 18 JUN 2020

EC-3, 21 MAY 2020 to 18 JUN 2020