

ORLANDO APP CON

134.05 339.8

ORLANDO INTL D-ATIS ARR

121.25

EXECUTIVE ATIS

127.25

KISSIMMEE GATEWAY AWOS-3

128.775

ALMA
115.1 AMG
Chan 98
N31°32.19' - W82°30.49'
L-24, H-9-12

VALDOSTA
114.8 OTK
Chan 95
N30°46.83' - W83°16.78'
L-21-22, H-9-12

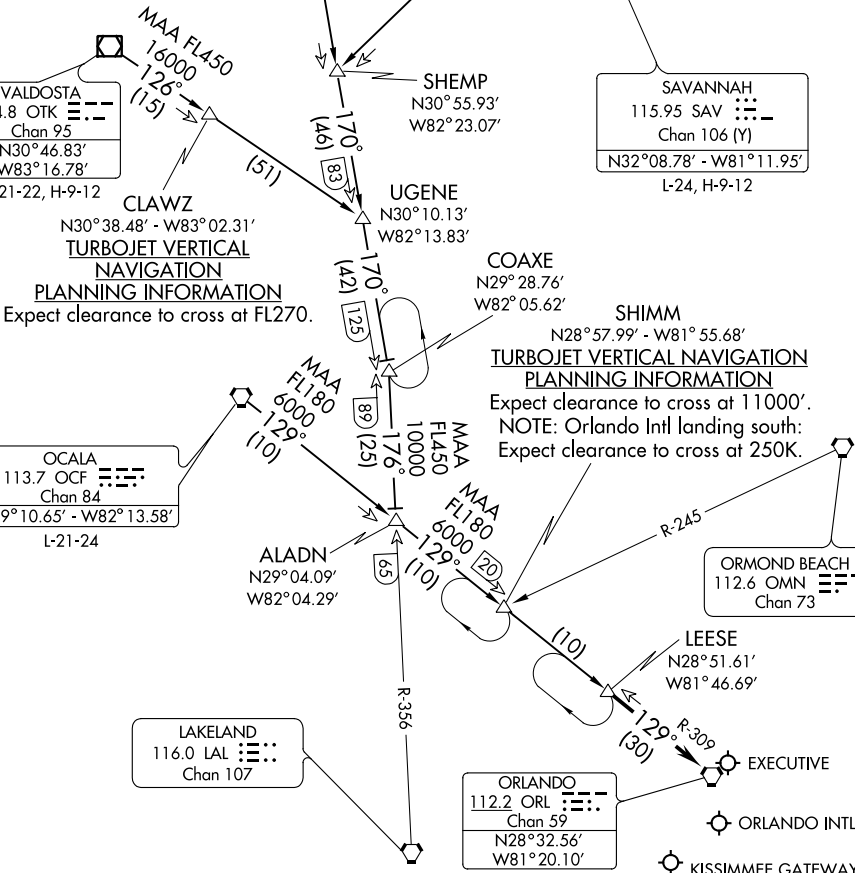
SAVANNAH
115.95 SAV
Chan 106 (Y)
N32°08.78' - W81°11.95'
L-24, H-9-12

OCALA
113.7 OCF
Chan 84
N29°10.65' - W82°13.58'
L-21-24

LAKELAND
116.0 LAL
Chan 107

ORLANDO
112.2 ORL
Chan 59
N28°32.56' - W81°20.10'

ORLANDO INTL
KISSIMMEE GATEWAY



TURBOJET VERTICAL NAVIGATION PLANNING INFORMATION
Expect clearance to cross at FL270.

TURBOJET VERTICAL NAVIGATION PLANNING INFORMATION
Expect clearance to cross at 11000'.
NOTE: Orlando Intl landing south:
Expect clearance to cross at 250K.

NOTE: DME REQUIRED.

NOTE: Chart not to scale.

SE-3, 21 MAY 2020 to 18 JUN 2020

SE-3, 21 MAY 2020 to 18 JUN 2020