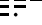


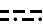
BITHO SEVEN ARRIVAL (BITHO.BITHO7)

AL-571 (FAA)

ORLANDO, FLORIDA

ORLANDO INTL D-ATIS ARR
121.25
ORLANDO APP CON
128.375 338.2

ORMOND BEACH
112.6 OMN 
Chan 73
N29°18.20' - W81°06.76'
L-21-23-24, H-8

OCALA
113.7 OCF 
Chan 84

ORLANDO
112.2 ORL 
Chan 59

LAMMA
N29°00.87' - W81°05.38'
**TURBOJET VERTICAL NAVIGATION
PLANNING INFORMATION**

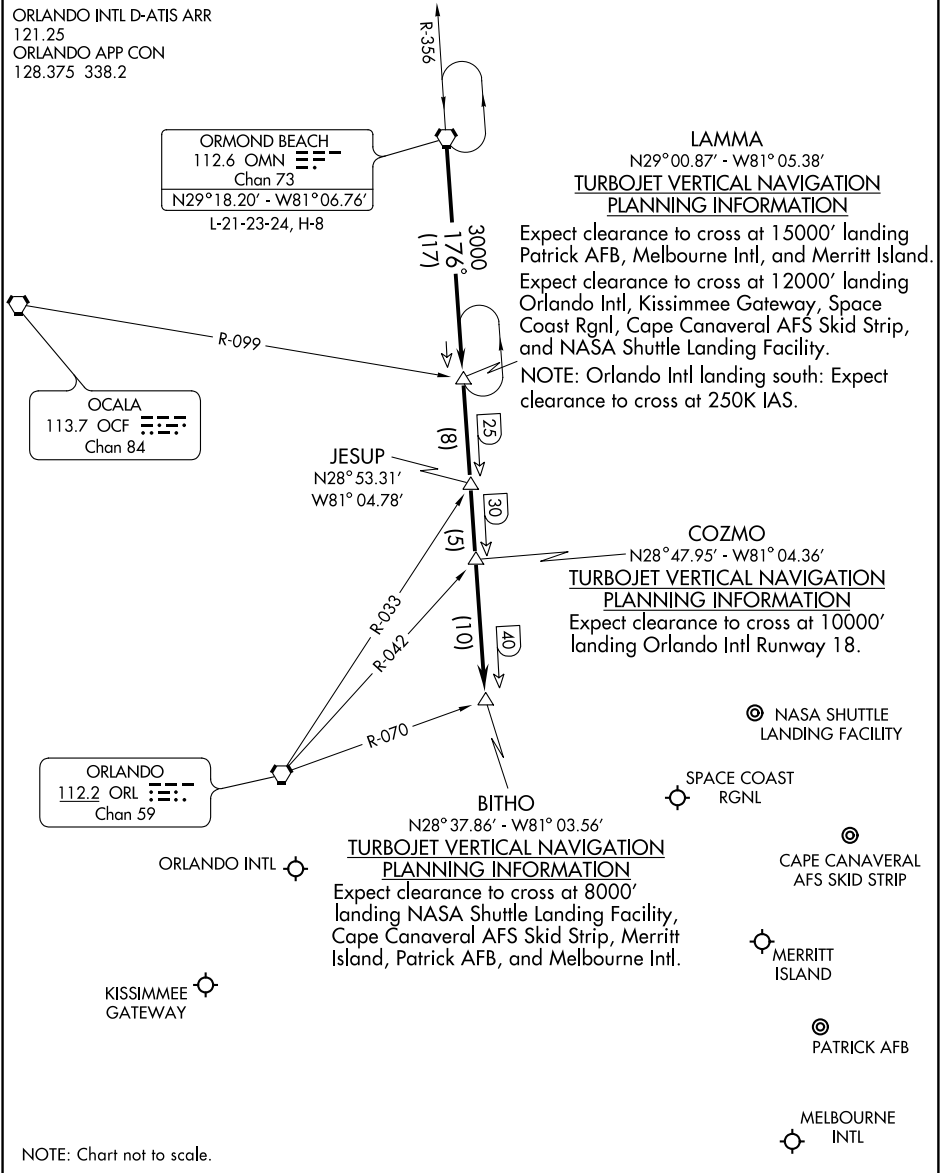
Expect clearance to cross at 15000' landing Patrick AFB, Melbourne Intl, and Merritt Island.
Expect clearance to cross at 12000' landing Orlando Intl, Kissimmee Gateway, Space Coast Rgnl, Cape Canaveral AFS Skid Strip, and NASA Shuttle Landing Facility.
NOTE: Orlando Intl landing south: Expect clearance to cross at 250K IAS.

COZMO
N28°47.95' - W81°04.36'
**TURBOJET VERTICAL NAVIGATION
PLANNING INFORMATION**

Expect clearance to cross at 10000' landing Orlando Intl Runway 18.

BITHO
N28°37.86' - W81°03.56'
**TURBOJET VERTICAL NAVIGATION
PLANNING INFORMATION**

Expect clearance to cross at 8000' landing NASA Shuttle Landing Facility, Cape Canaveral AFS Skid Strip, Merritt Island, Patrick AFB, and Melbourne Intl.



SE-3, 21 MAY 2020 to 18 JUN 2020

SE-3, 21 MAY 2020 to 18 JUN 2020

NOTE: Chart not to scale.

From over OMN VORTAC via OMN R-176 to BITHO INT. Expect radar vectors to final approach course after BITHO INT.

BITHO SEVEN ARRIVAL (BITHO.BITHO7)

ORLANDO, FLORIDA