

WAAS CH <b>62829</b> <b>W17A</b>	APP CRS <b>175°</b>	Rwy Idg TDZE Apt Elev	<b>9000</b> <b>492</b> <b>542</b>
--	------------------------	-----------------------------	---

# RNAV (GPS) Y RWY 17L

AUSTIN-BERGSTROM INTL (AUS)

RNP APCH.

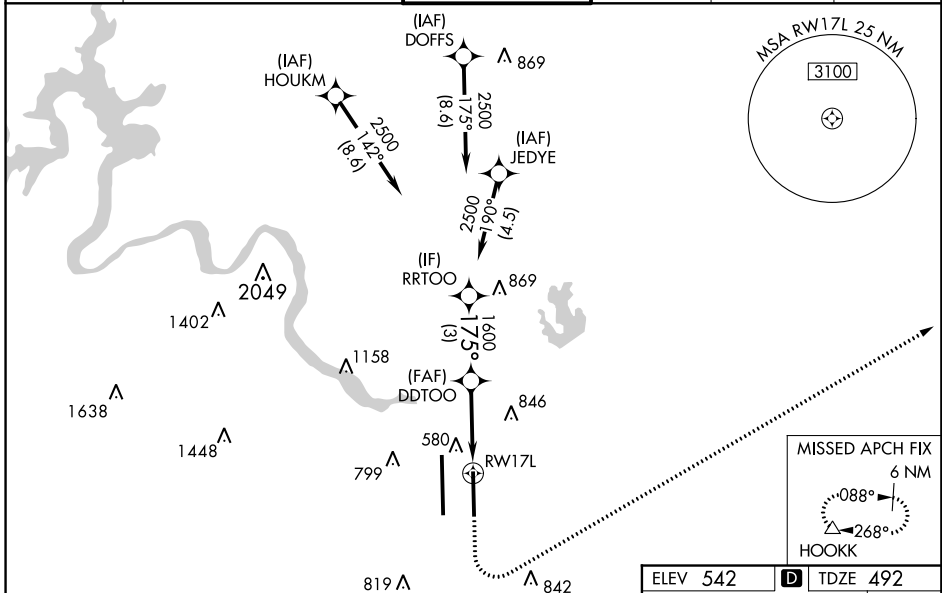
RADAR required for procedure entry.

- ▼ For uncompensated Baro-VNAV systems, LNAV/VNAV NA below -6°C or above 54°C.
- ▲ Simultaneous approach authorized. LNAV procedure NA during simultaneous operations.
- Use of FD or AP providing RNAV track guidance required during simultaneous operations.
- For inop ALS, increase visibility LPV Cat E to RVR 4000, LNAV/VNAV Cat E to 1 $\frac{3}{8}$  SM and LNAV Cats C/D/E to 1 $\frac{1}{8}$  SM.



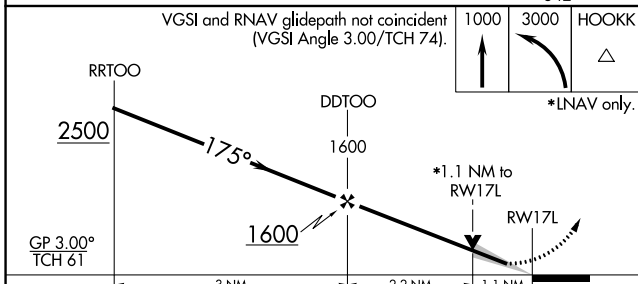
MISSED APPROACH:  
Climb to 1000 then  
climbing left turn to 3000  
direct HOOKK and hold.

D-ATIS <b>124.4</b>	AUSTIN APP CON <b>127.225 317.65</b> (EAST) <b>120.875 270.25</b> (SOUTH) <b>119.0 370.85</b> (WEST)	AUSTIN TOWER <b>121.0 281.5</b>	GND CON <b>121.9 348.6</b>	CLNC DEL <b>125.5 263.0</b>	CPDLC
------------------------	---	------------------------------------	-------------------------------	--------------------------------	-------



SC-3, 21 MAY 2020 to 18 JUN 2020

SC-3, 21 MAY 2020 to 18 JUN 2020



CATEGORY	A	B	C	D	E
LPV DA	692/18		200 (200- $\frac{1}{2}$ )		
LNAV/VNAV DA	906/45		414 (400- $\frac{7}{8}$ )		
LNAV MDA	900/24	408 (400- $\frac{1}{2}$ )	900/40		408 (400- $\frac{3}{4}$ )
CIRCLING	1040-1 498 (500-1)	1100-1 558 (600-1)	1200-1 $\frac{3}{4}$ 658 (700-1 $\frac{3}{4}$ )	1200-2 658 (700-2)	1520-3 978 (1000-3)

