


APP CRS	Rwy Idg	12250
355°	TDZE	496
	Apt Elev	542

RNAV (RNP) Z RWY 35L

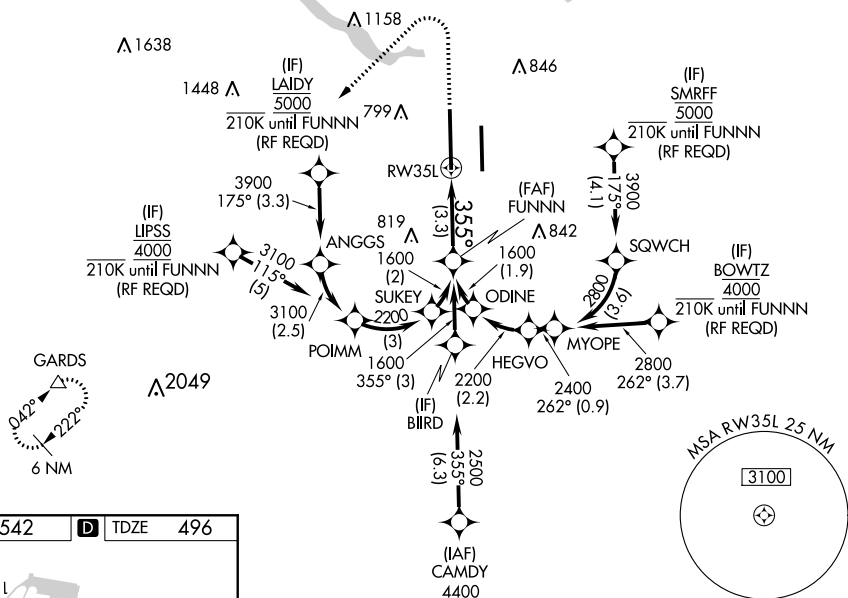
AUSTIN-BERGSTROM INTL (AUS)

▽ For uncompensated Baro-VNAV systems, procedure NA below -6°C (22°F) or above 54°C (130°F). Simultaneous approach authorized. GPS required. For inop ALS, increase RNP 0.11 all Cats visibility to RVR 4500 and RNP 0.30 all Cats visibility to 1½ SM.

MALSR

MISSED APPROACH:
 Climb to 1700 then climbing left turn to 3500 direct GARDS and hold.

D-ATIS	AUSTIN APP CON	AUSTIN TOWER	GND CON	CLNC DEL	CPDLC
124.4	127.225 317.65 (EAST) 120.875 270.25 (SOUTH) 119.0 370.85 (WEST)	121.0 281.5	121.9 348.6	125.5 263.0	

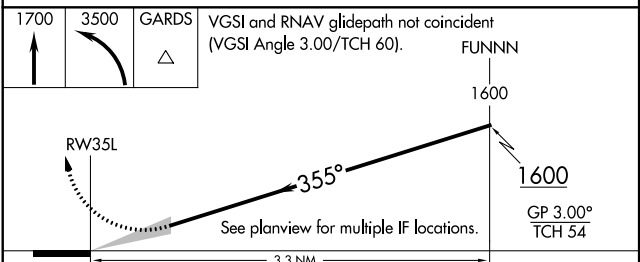
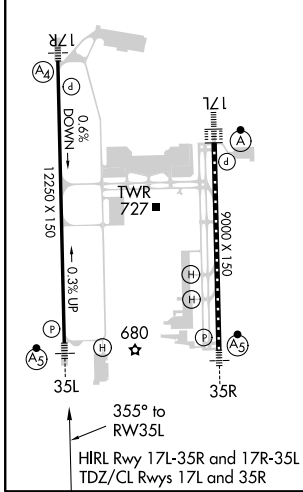
RADAR REQUIRED



SC-3, 21 MAY 2020 to 18 JUN 2020

SC-3, 21 MAY 2020 to 18 JUN 2020

ELEV	542	D	TDZE	496
------	------------	----------	------	------------



CATEGORY	A	B	C	D
RNP 0.11 DA		765/24	269 (300-½)	
RNP 0.30 DA		952/60	456 (500-1½)	

AUTHORIZATION REQUIRED