

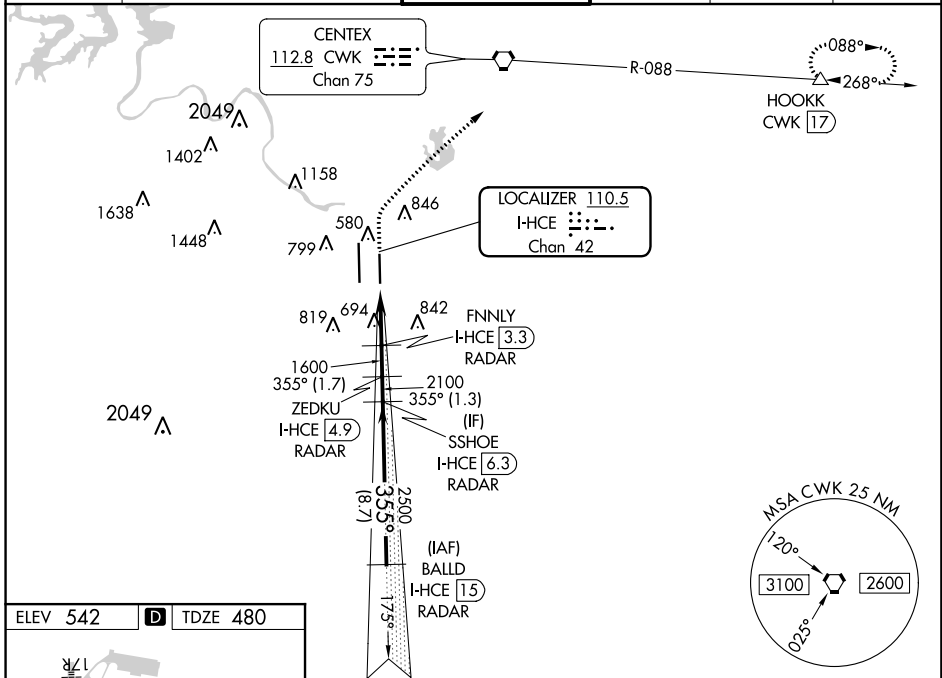
LOC/DME I-HCE 110.5 Chan 42	APP CRS 355°	Rwy Idg TDZE Apt Elev	9000 480 542
---	------------------------	-----------------------------	---

ILS or LOC RWY 35R

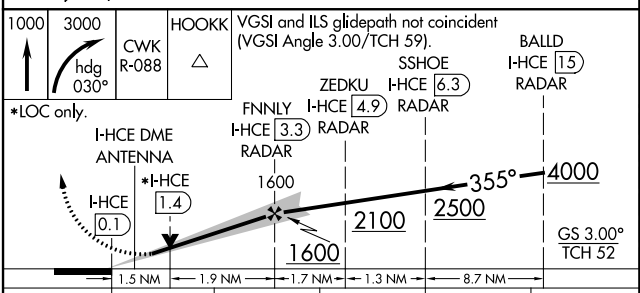
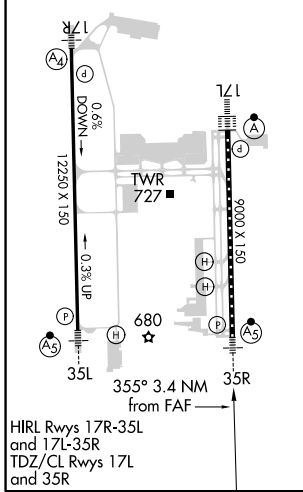
AUSTIN-BERGSTROM INTL (AUS)

DME required. RADAR required for procedure entry.		MALSR 	MISSED APPROACH: Climb to 1000 then climbing right turn to 3000 on heading 030° and CWK VORTAC R-088 to HOOKK/CWK 17 DME and hold.		
 Simultaneous approach authorized. For inop ALS, increase S-ILS 35R Cat E visibility to RVR 4000, S-LOC 35R Cats C/D/E visibility to 1/2 SM.					

D-ATIS 124.4	AUSTIN APP CON 127.225 317.65 (EAST) 120.875 270.25 (SOUTH) 119.0 370.85 (WEST)	AUSTIN TOWER 121.0 281.5	GND CON 121.9 348.6	CLNC DEL 125.5 263.0	CPDLC
------------------------	---	------------------------------------	-------------------------------	--------------------------------	-------



ELEV 542	D	TDZE 480
-----------------	----------	-----------------



CATEGORY	A	B	C	D	E
S-ILS 35R	680/18 200 (200-1/2)				
S-LOC 35R	1000/24	520 (500-1/2)	1000/55	520 (500-1)	
C CIRCLING	1040-1 498 (500-1)	1100-1 558 (600-1)	1200-1 3/4 658 (700-1 3/4)	1200-2 658 (700-2)	1520-3 978 (1000-3)

SC-3, 21 MAY 2020 to 18 JUN 2020

SC-3, 21 MAY 2020 to 18 JUN 2020