

# WNSKI TWO DEPARTURE

AL-546 (FAA)

PRESCOTT, ARIZONA

SW-4, 21 MAY 2020 to 18 JUN 2020

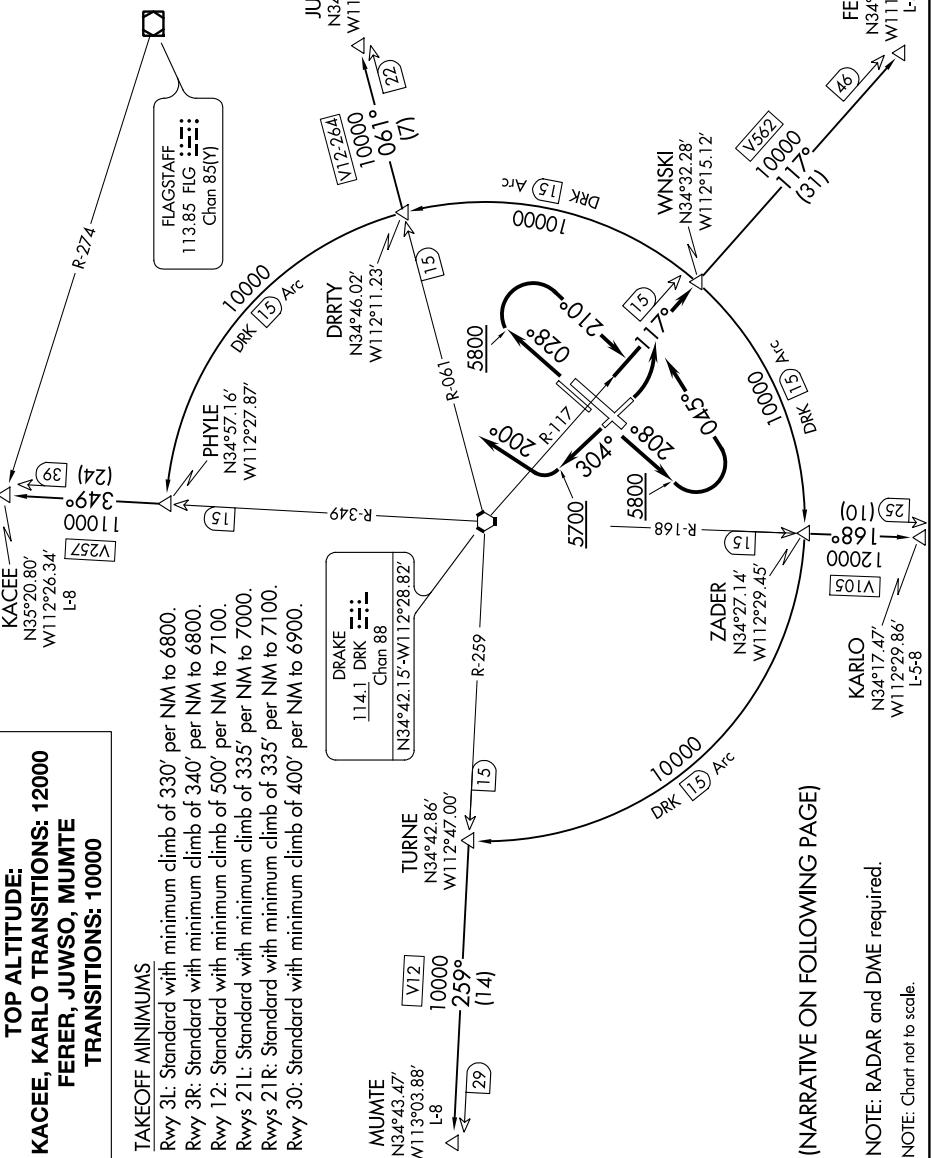
ATIS 127.2  
 CLNC DEL 119.25  
 GND CON 121.7  
 PRESCOTT TOWER\* 125.3, 257.9  
 PHOENIX DEP CON 133.575 281.55

FLAGSTAFF  
 113.85 FLG  
 Chan 83(Y)

JUWSO  
 N34°47.81'  
 W112°03.01'  
 L-8



FERER  
 N34°11.87'  
 W111°47.64'  
 L-5-8



**TOP ALTITUDE:**  
**KACEE, KARLO TRANSITIONS: 12000**  
**FERER, JUWSO, MUMTE TRANSITIONS: 10000**

**TAKEOFF MINIMUMS**  
 Rwy 3L: Standard with minimum climb of 330' per NM to 6800.  
 Rwy 3R: Standard with minimum climb of 340' per NM to 6800.  
 Rwy 12: Standard with minimum climb of 500' per NM to 7100.  
 Rwy 21L: Standard with minimum climb of 335' per NM to 7000.  
 Rwy 21R: Standard with minimum climb of 335' per NM to 7100.  
 Rwy 30: Standard with minimum climb of 400' per NM to 6900.

(NARRATIVE ON FOLLOWING PAGE)

NOTE: RADAR and DME required.  
 NOTE: Chart not to scale.

SW-4, 21 MAY 2020 to 18 JUN 2020

# WNSKI TWO DEPARTURE