

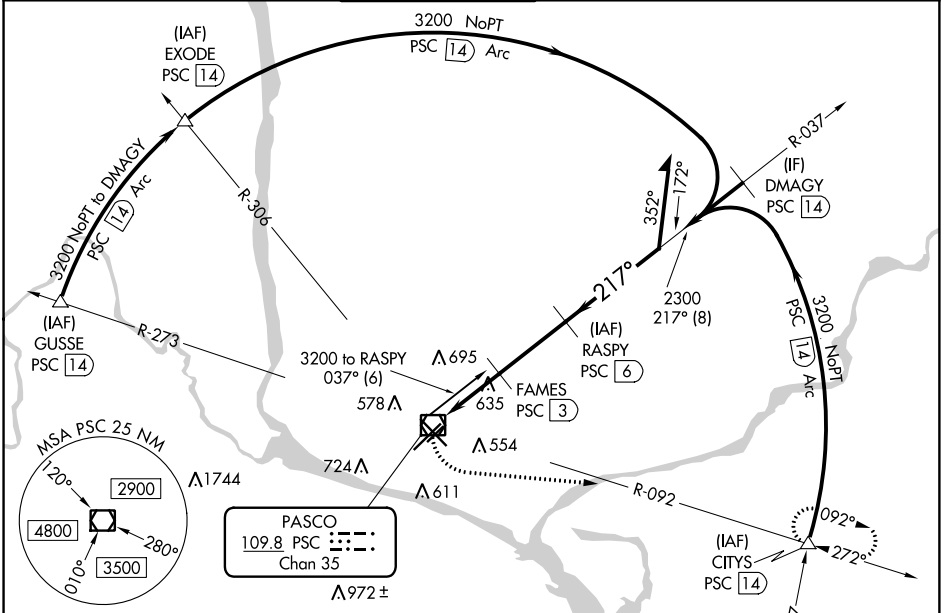
VOR/DME PSC 109.8 Chan 35	APP CRS 217°	Rwy Idg TDZE 404 Apt Elev 410
---	------------------------	---

VOR RWY 21R

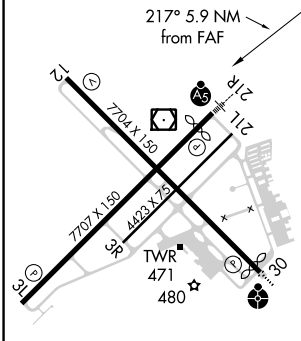
TRI-CITIES (PSC)

DME required.		MALSR 	MISSED APPROACH: Climbing left turn to 3200 on heading 080° and PSC VOR/DME R-092 PSC VOR/DME to CITYS INT/PSC 1.4 DME and hold.
	VDP NA when using Hermiston altimeter setting. When local altimeter setting not received, use Hermiston altimeter setting and increase all MDA 100 feet and increase S-21R Cat C/D visibility 3/8 SM and Circling Cat C/D visibility 1/4 SM. For inop ALS when using Hermiston altimeter setting, increase Cat C/D visibility to 1 3/4 SM.		

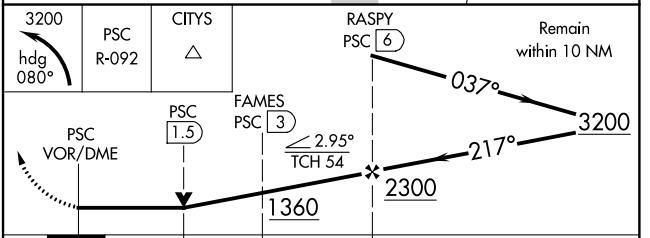
ATIS 125.65	CHINOOK APP CON* 128.75 377.2	TRI-CITIES TOWER* 135.3 (CTAF) 323.3	GND CON 121.8	CLNC DEL 120.0	UNICOM 122.95
-----------------------	---	---	-------------------------	--------------------------	-------------------------



ELEV 410	D	TDZE 404
----------	----------	----------



3200	PSC R-092	CITYS	RASPY PSC 6	Remain within 10 NM
------	-----------	-------	-------------	---------------------



CATEGORY	A	B	C	D
S-21R	940/24	536 (600-1/2)	940/55	536 (600-1)
CIRCLING	940-1	530 (600-1)	1040-1 3/4 630 (700-1 3/4)	1100-2 1/4 690 (700-2 1/4)

PASCO, WASHINGTON
Amdt 7A 05DEC19

46°16'N-119°07'W

TRI-CITIES (PSC) VOR RWY 21R

NW-1, 21 MAY 2020 to 18 JUN 2020

NW-1, 21 MAY 2020 to 18 JUN 2020